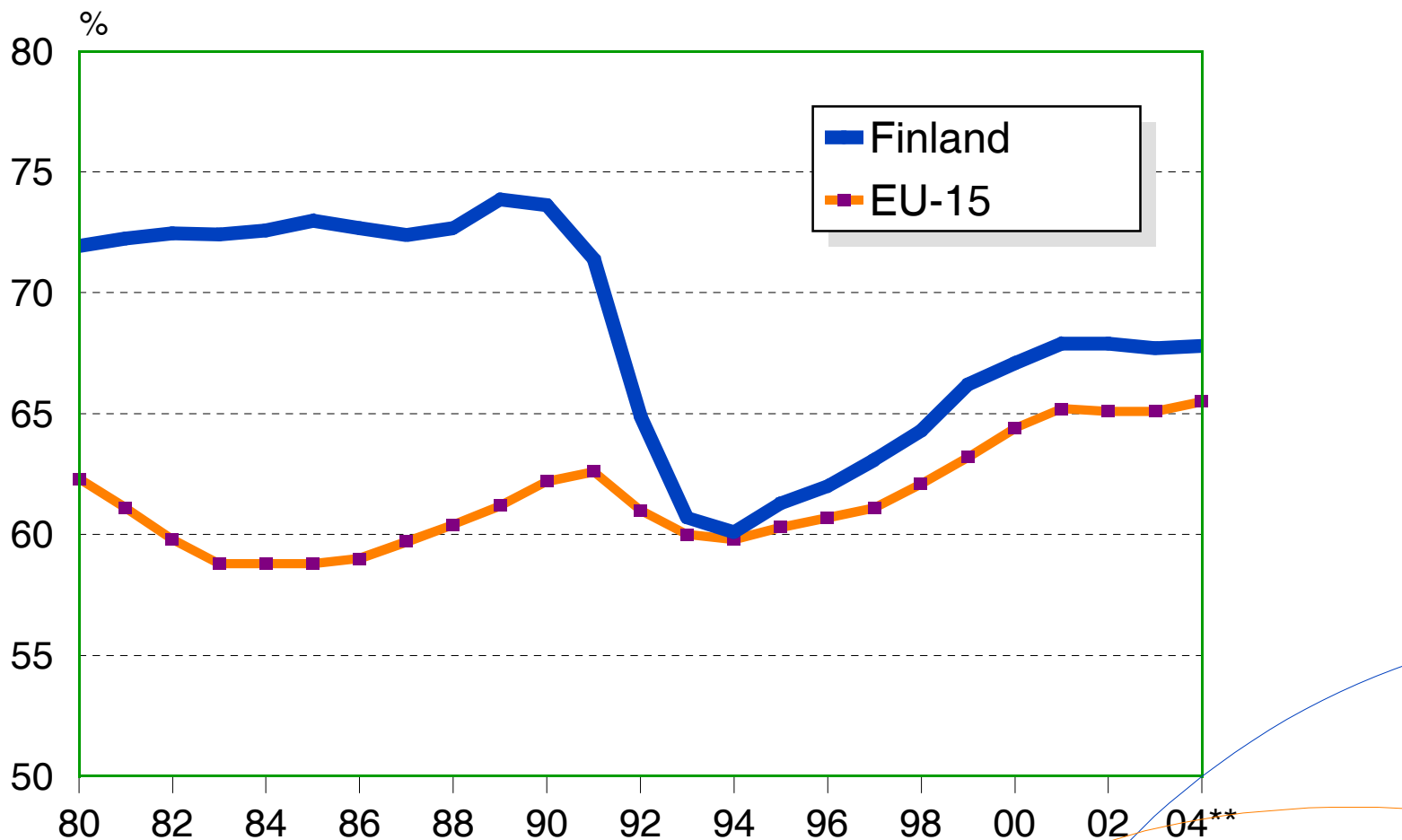
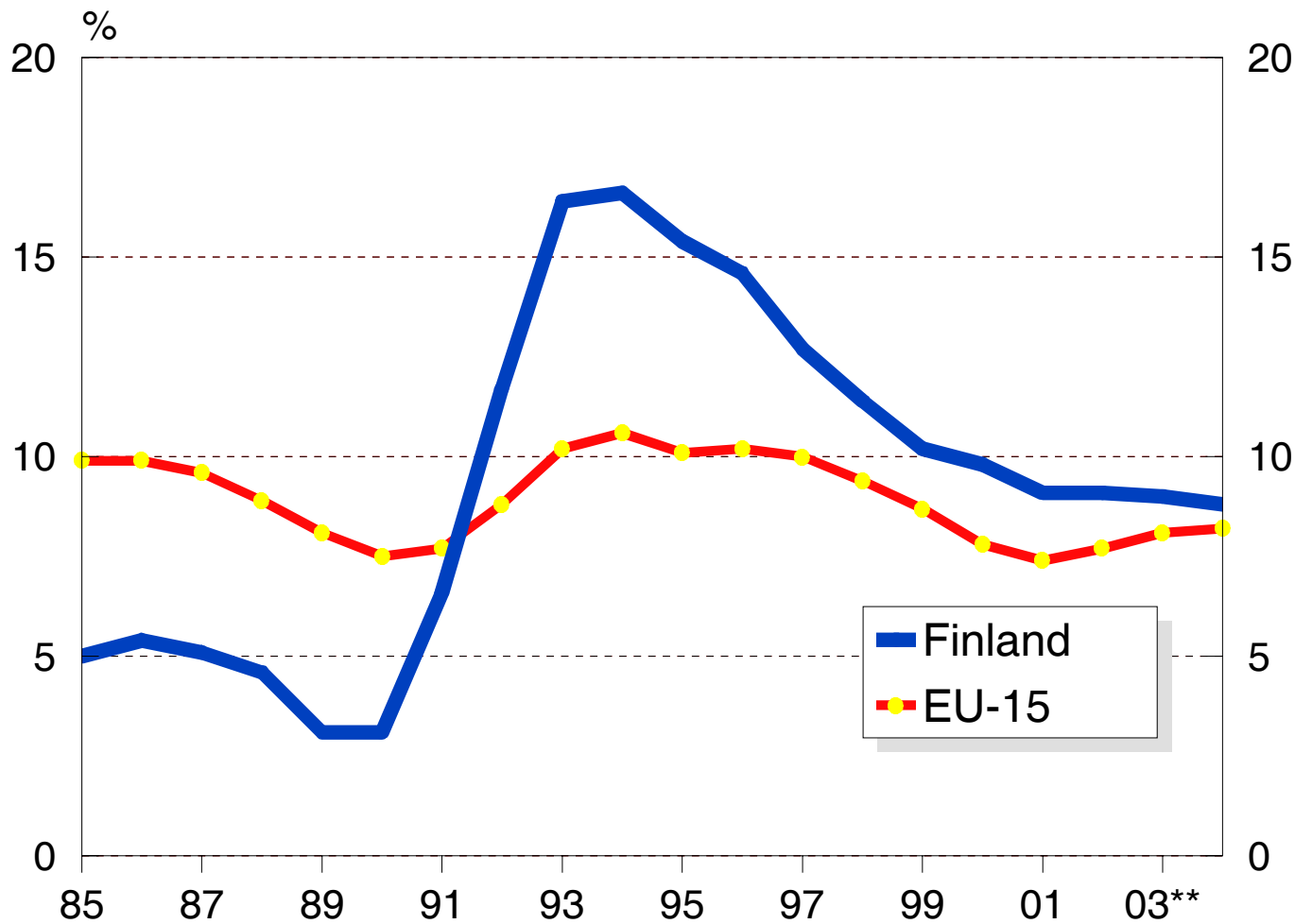


EMPLOYMENT RATE 1980 - 2004

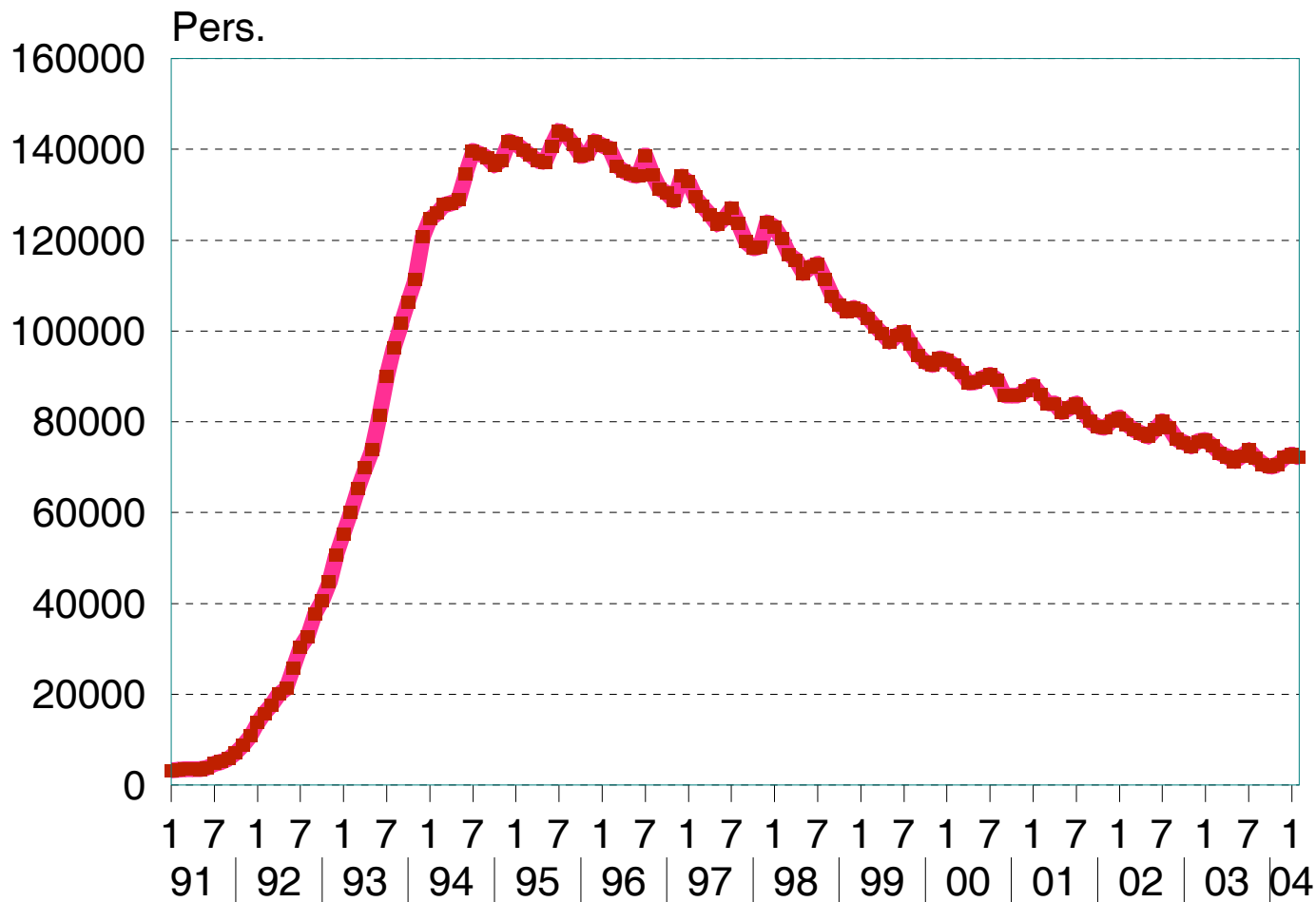
Employed/Working age population (15 - 64 years)



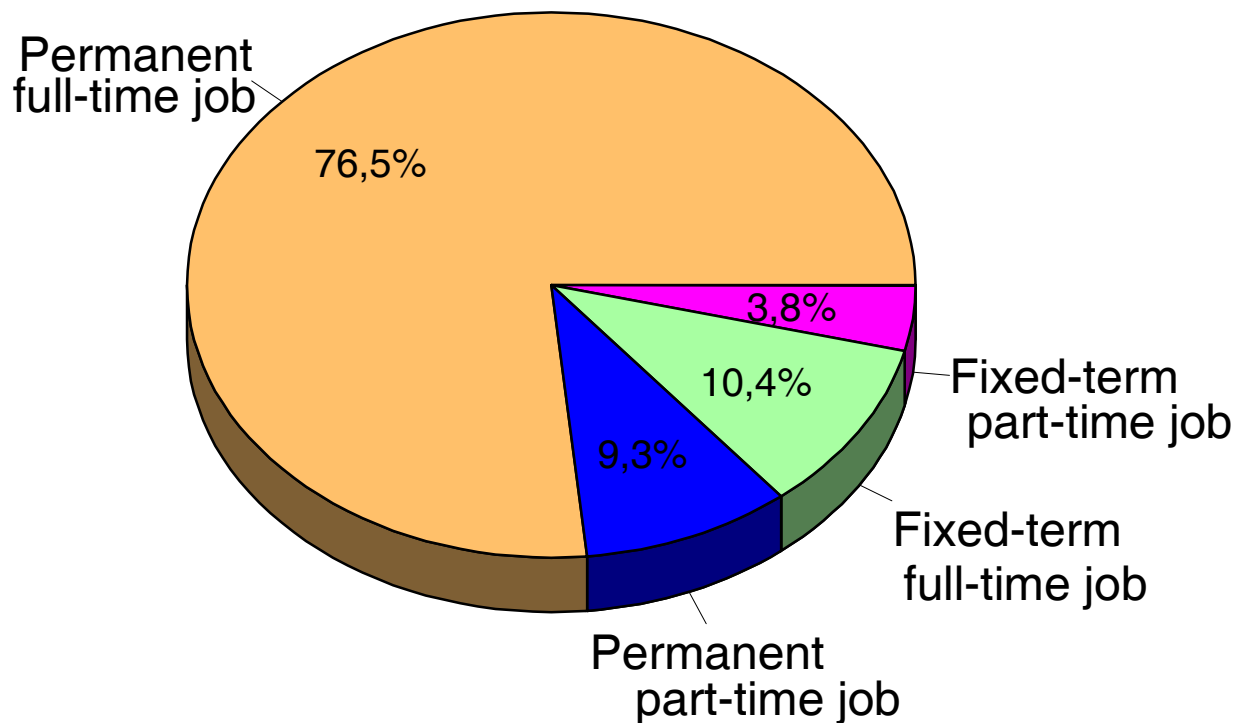
UNEMPLOYMENT RATE 1985 - 2004



LONG-TERM UNEMPLOYED 1991 - 2004:2

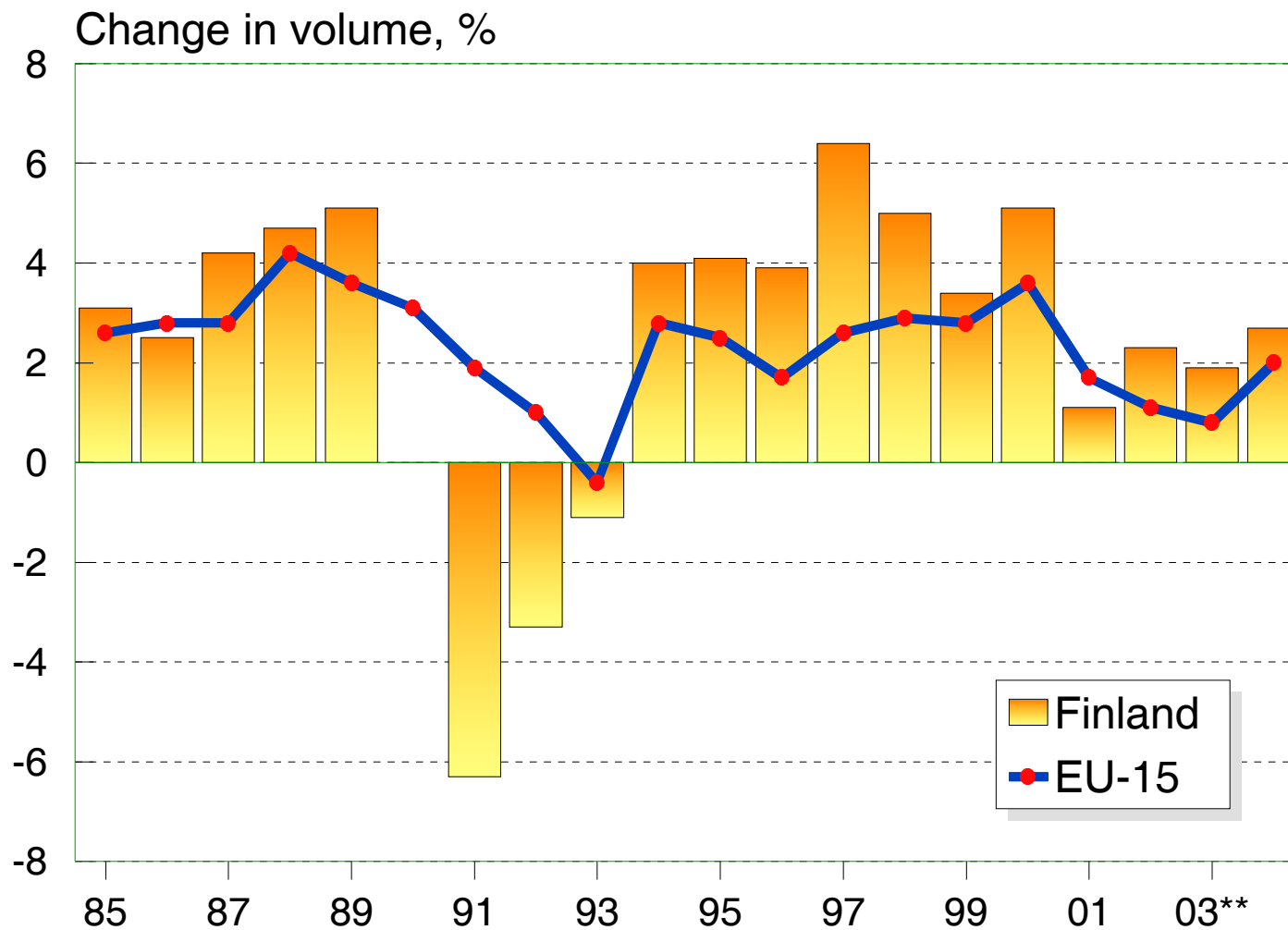


DIFFERENT TYPES OF EMPLOYEE RELATIONSHIPS, Februari 2004

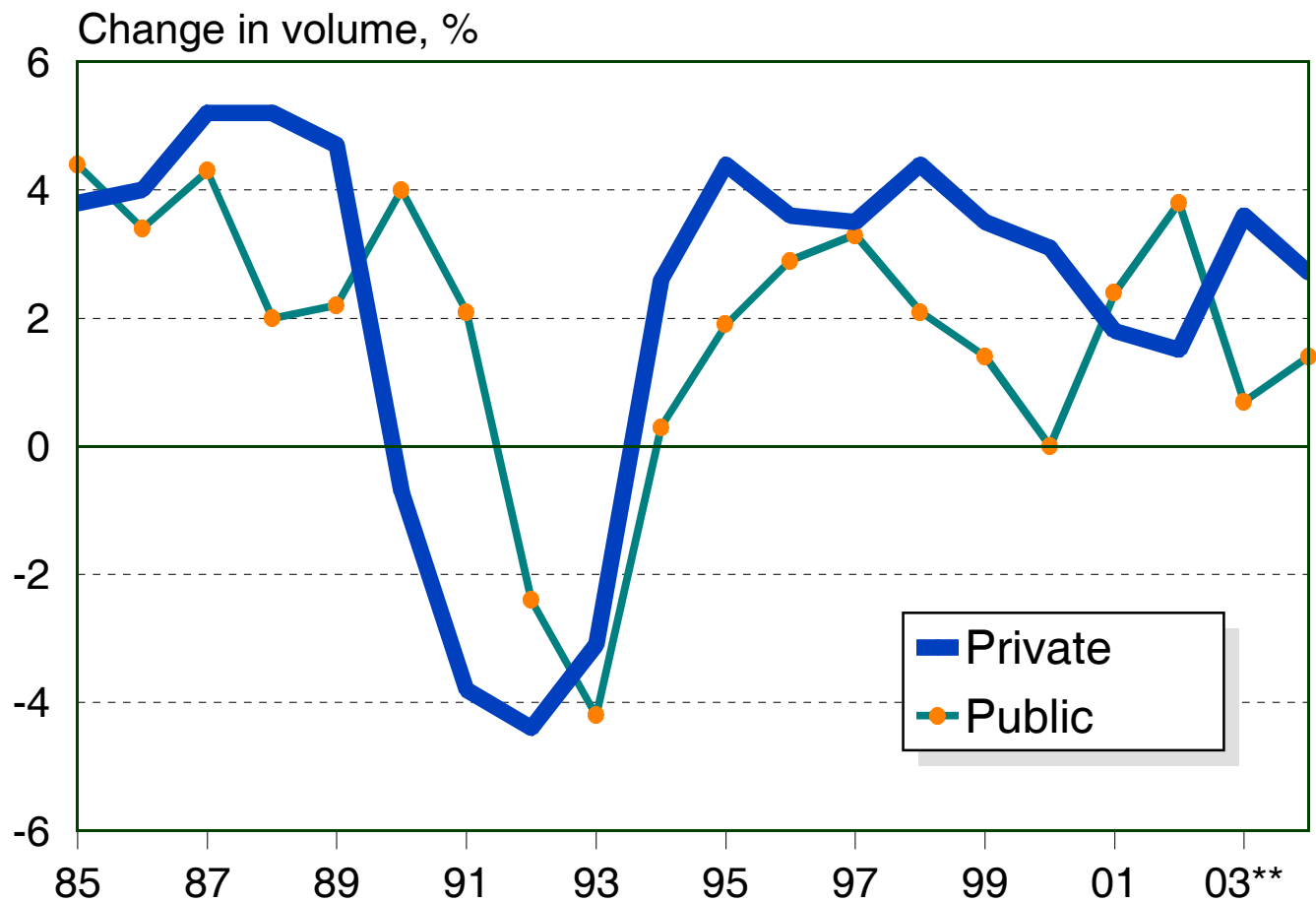


New employment contracts (Signed during previous 12 months)		
Permanent full-time job	36,1 %	} 63,9 %
Permanent full-time job	13,1 %	
Fixed-term full-time job	35,8 %	
Fixed-term full-time job	15,0 %	

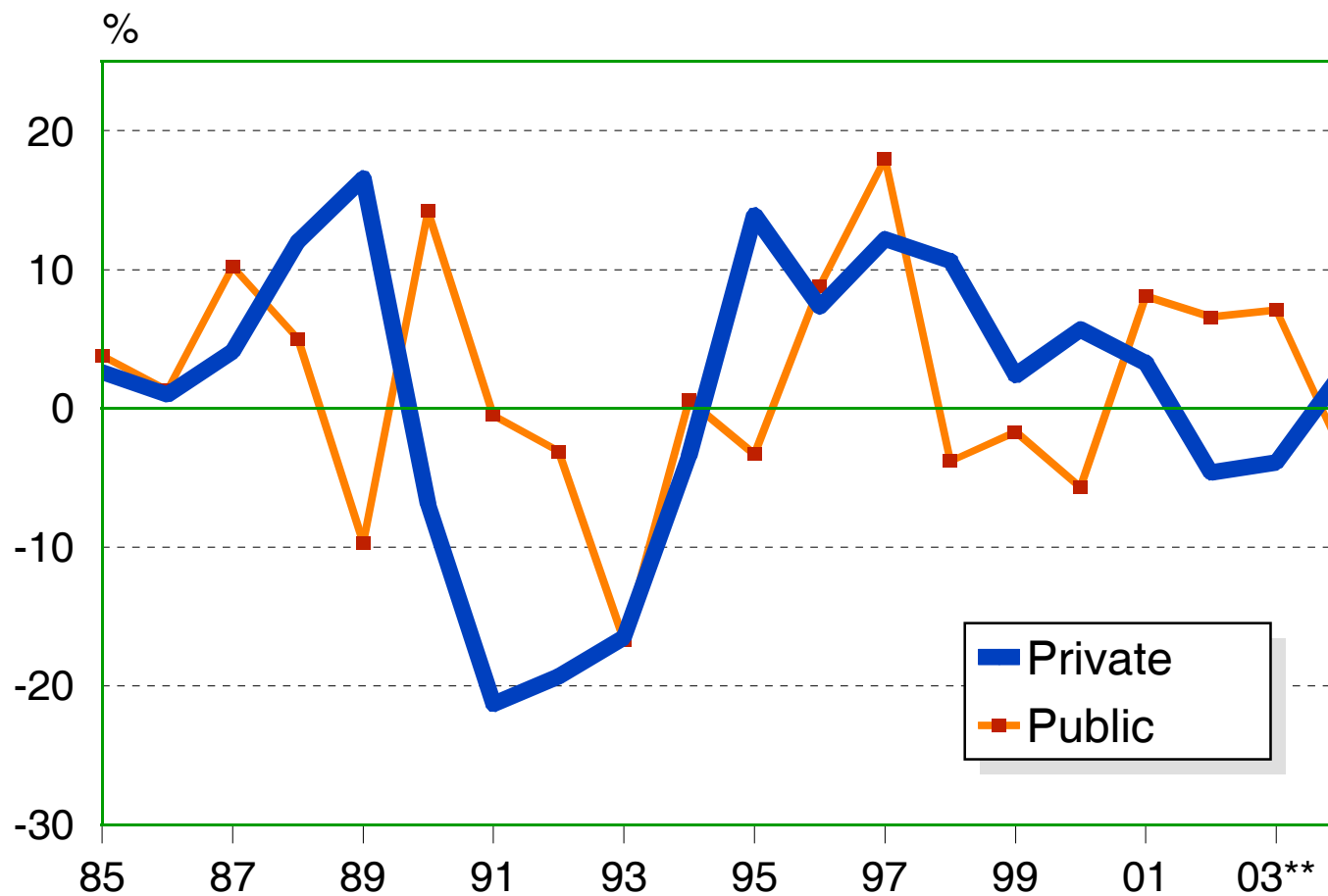
GROSS DOMESTIC PRODUCT 1985 - 2004



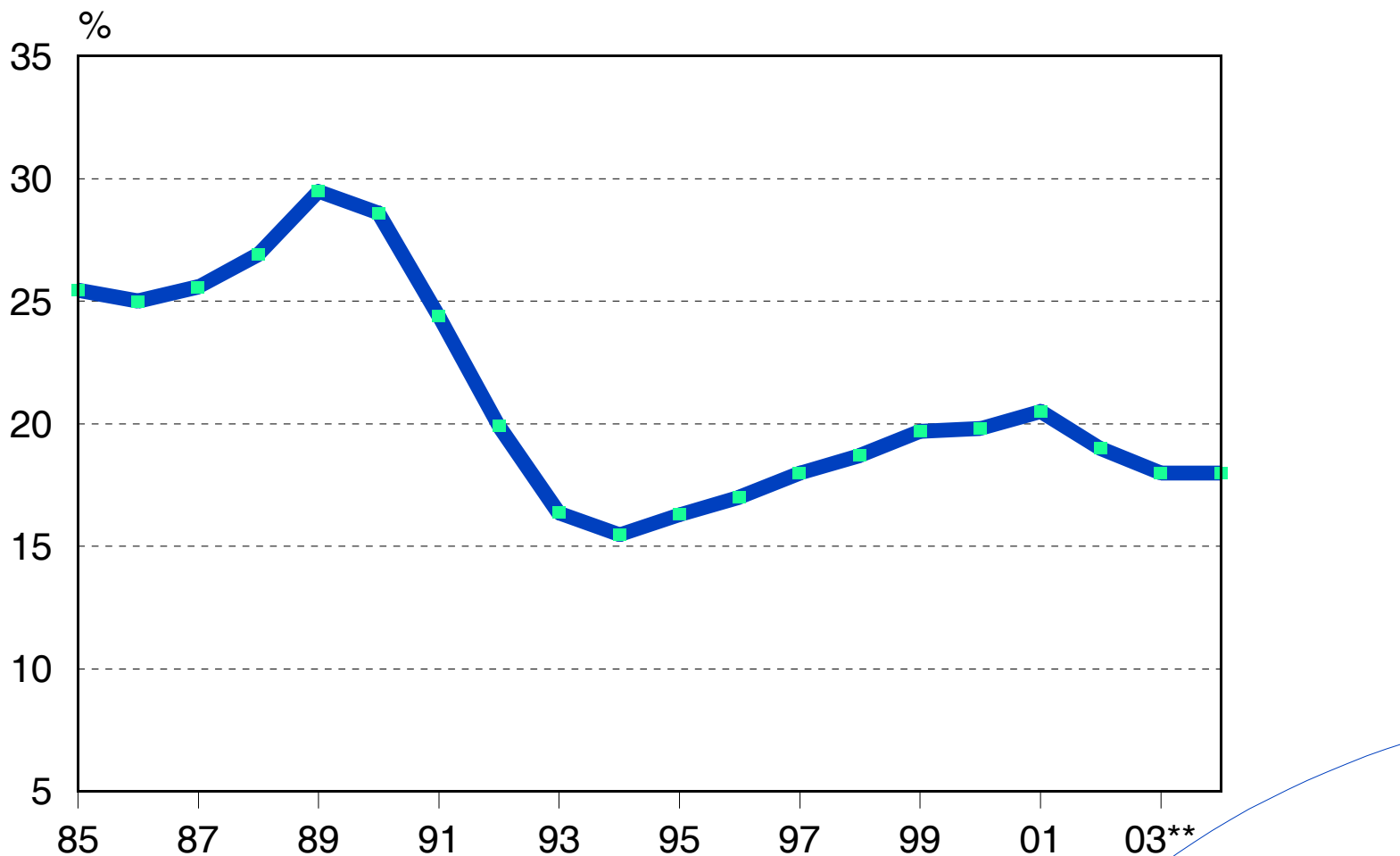
CONSUMPTION 1985 - 2004



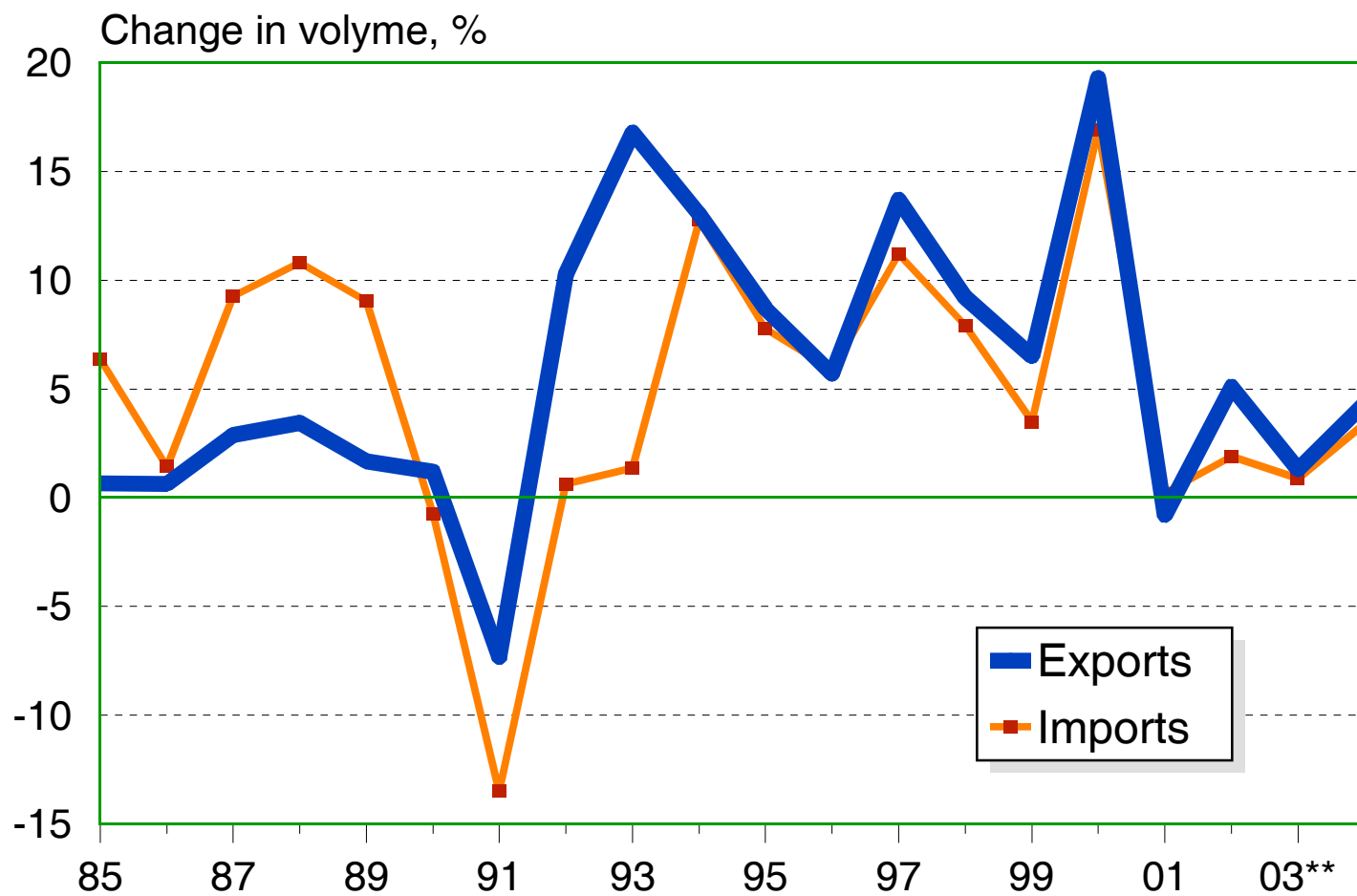
INVESTMENTS 1985 - 2004



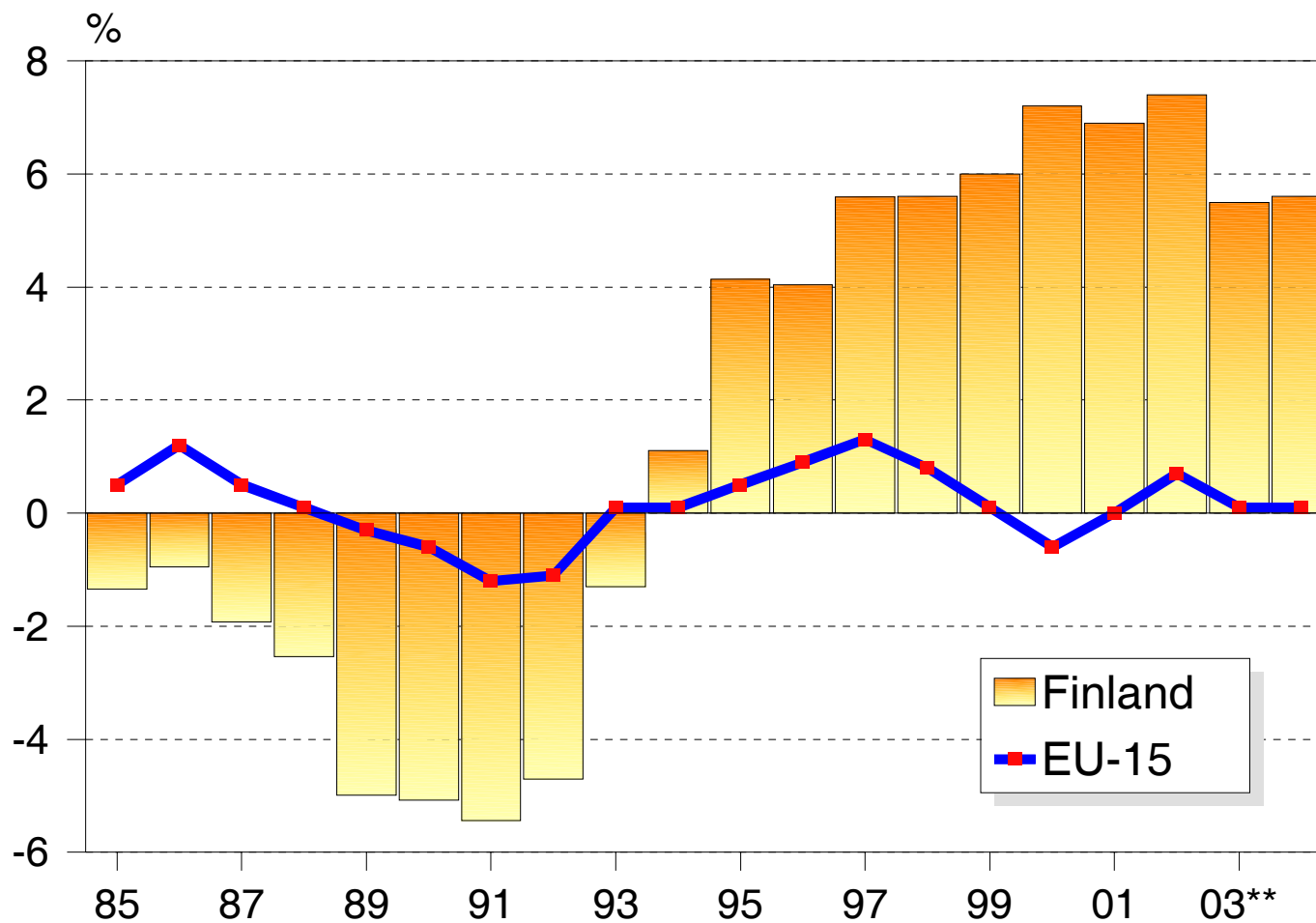
RATIO OF INVESTMENTS TO GDP 1985 - 2004



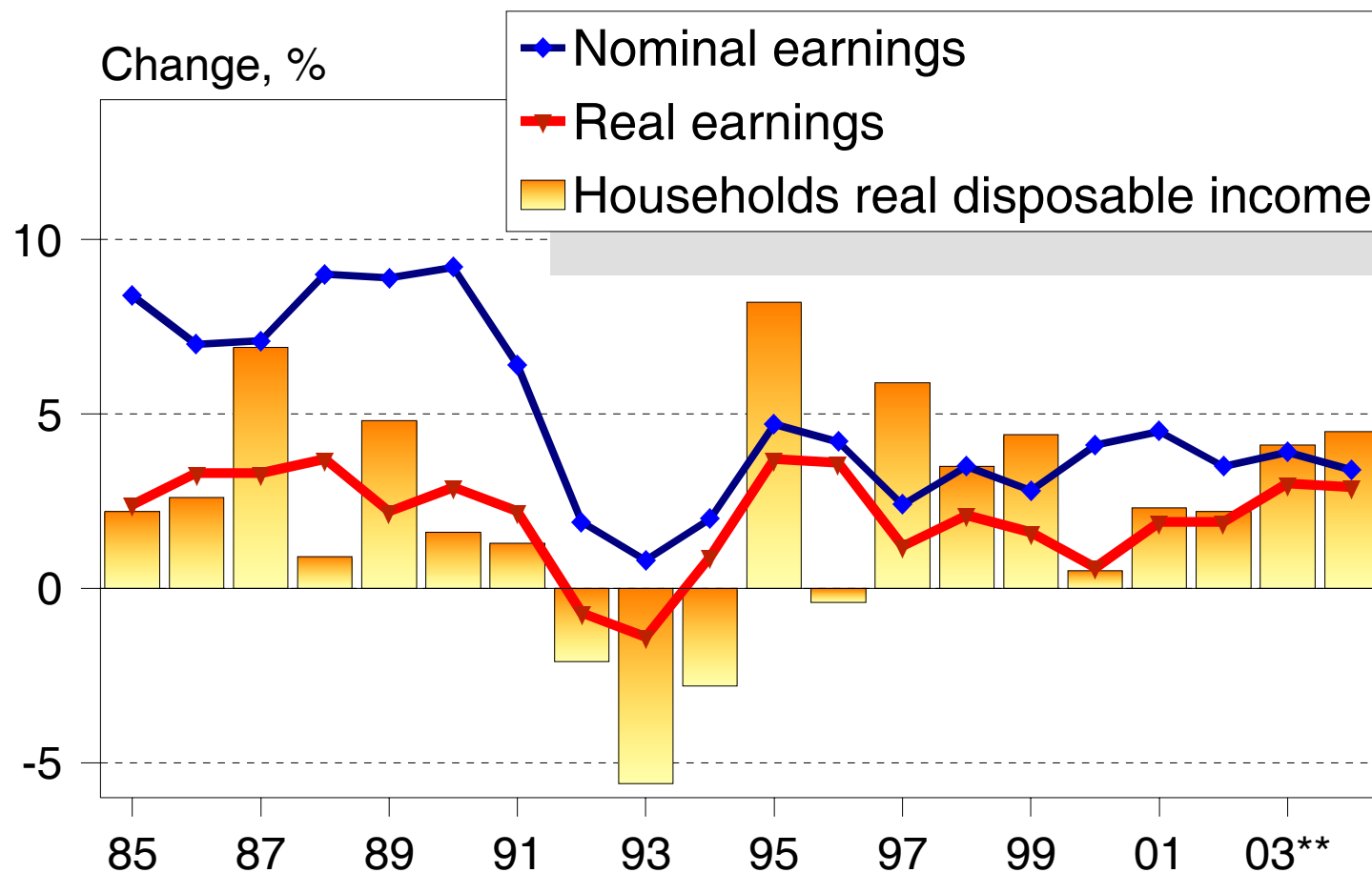
IMPORTS AND EXPORTS OF GOODS AND SERVICES, 1985 - 2004



CURRENT ACCOUNT 1985 - 2004 Relative to GDP

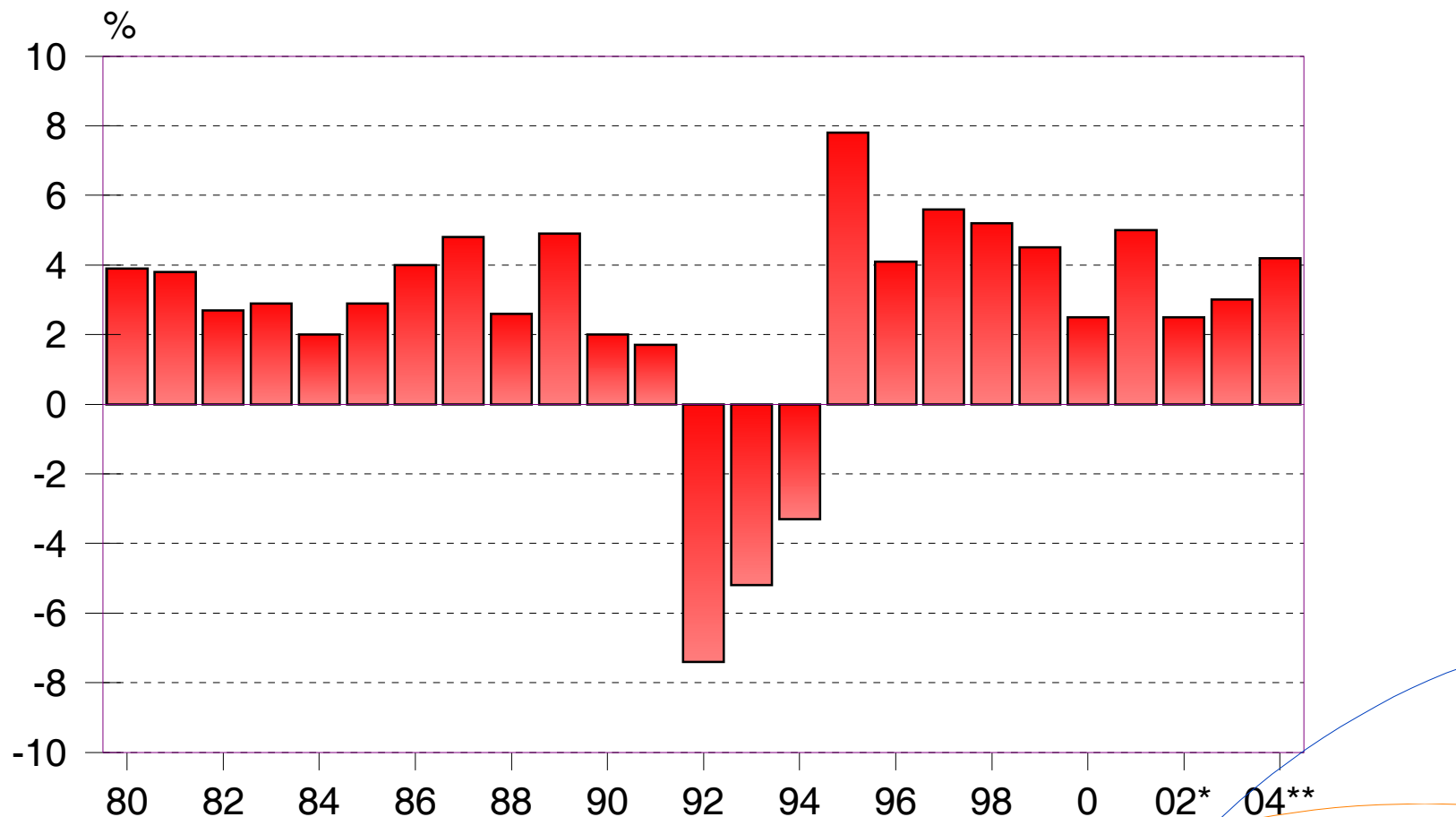


EMPLOYEES' NOMINAL AND REAL EARNINGS AND HOUSEHOLDS' REAL DISPOSABLE INCOME 1985 - 2004

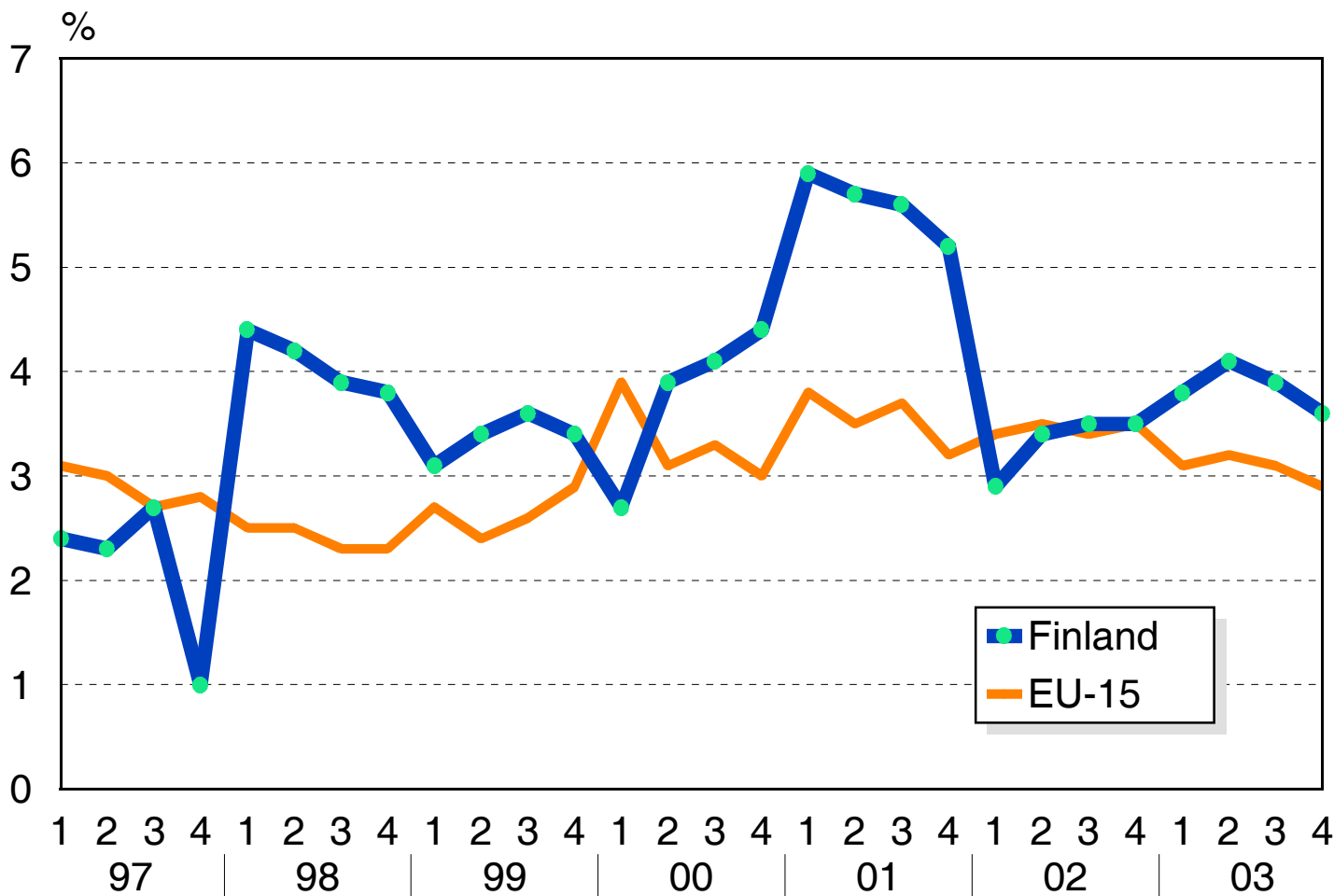


EMPLOYEES' REAL DISPOSABLE INCOME 1980 - 2004

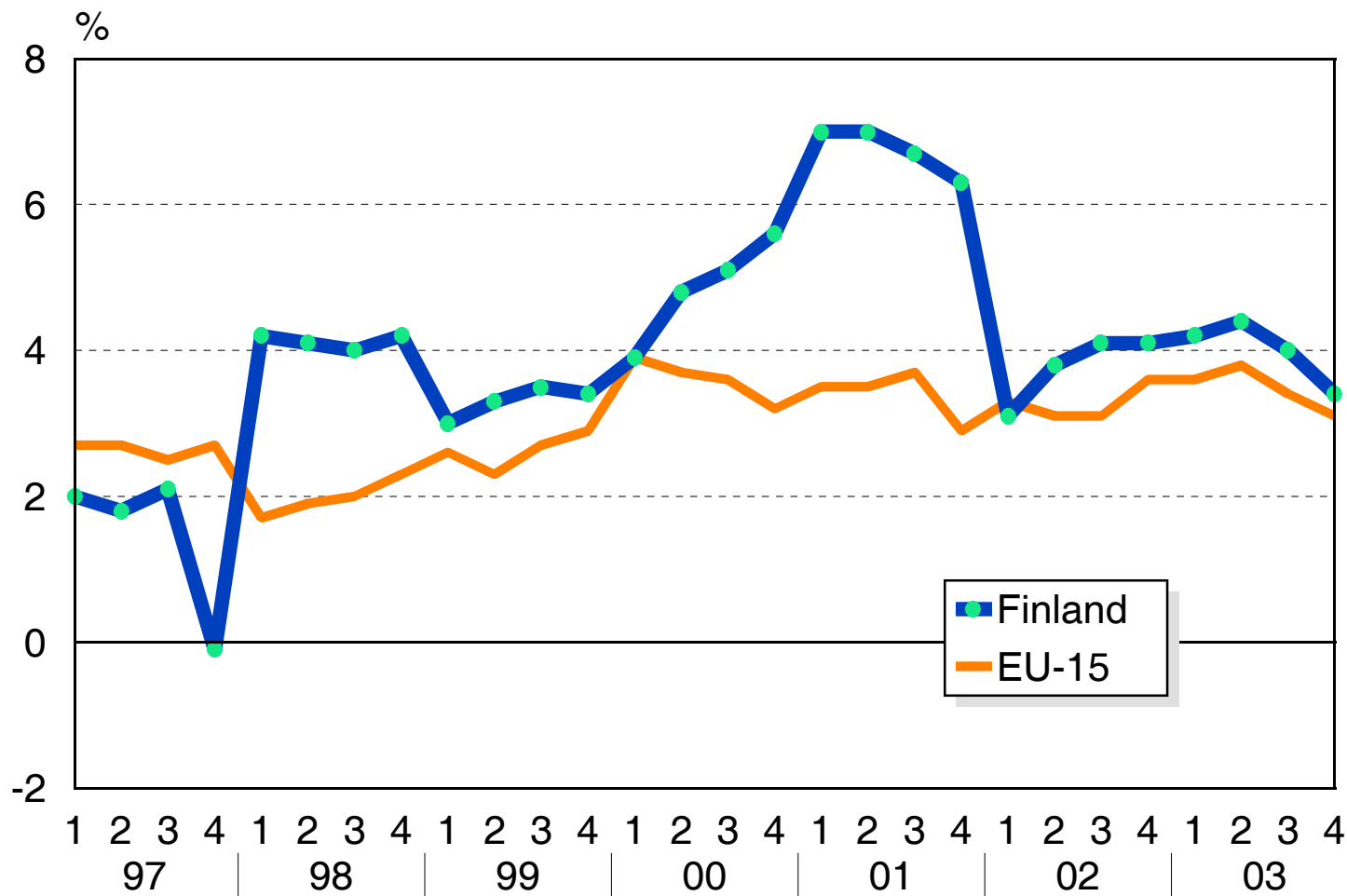
Change from previous year



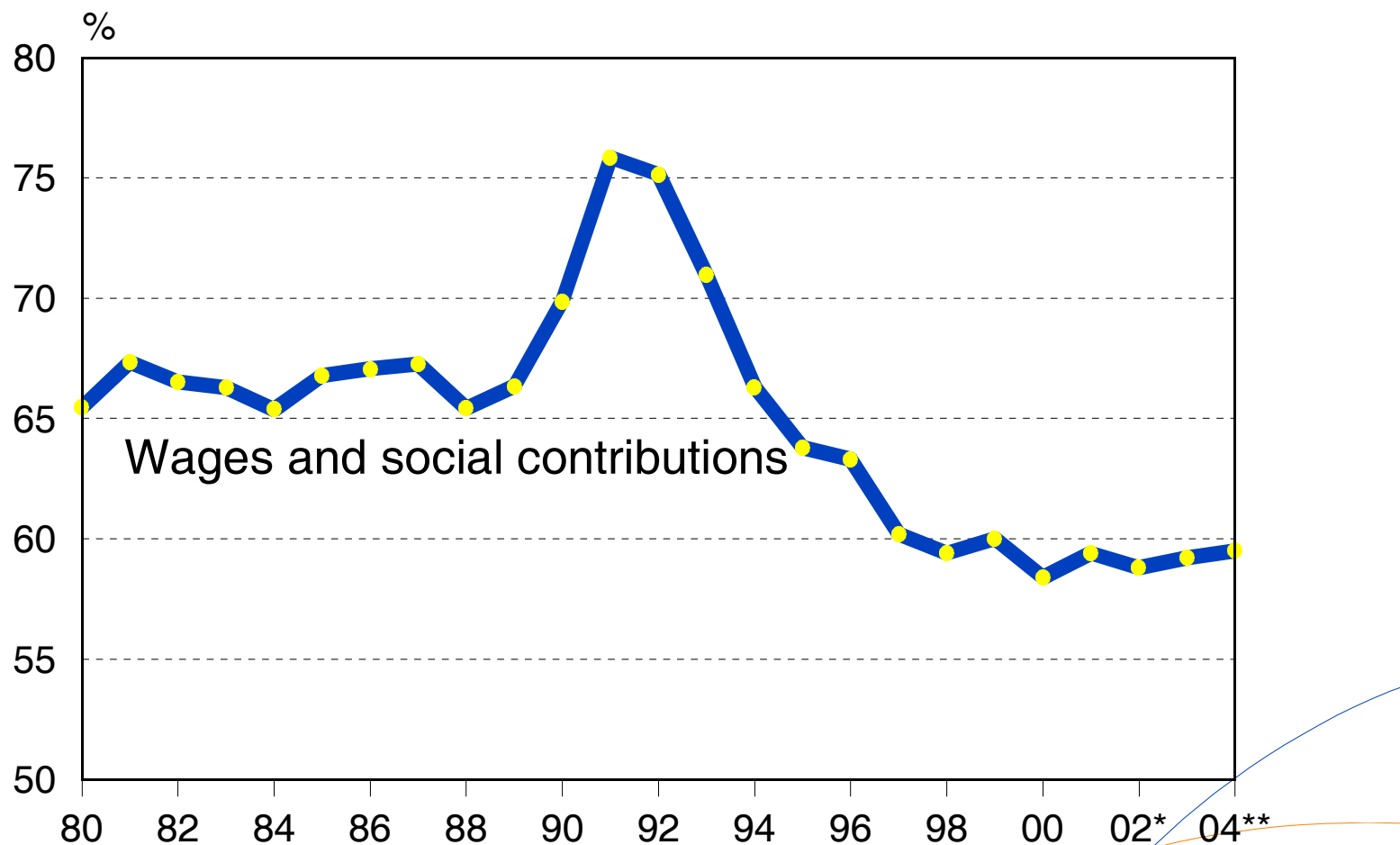
TOTAL NOMINAL LABOUR COSTS (private sector) 1997-2003, change compared to same quarter a year earlier



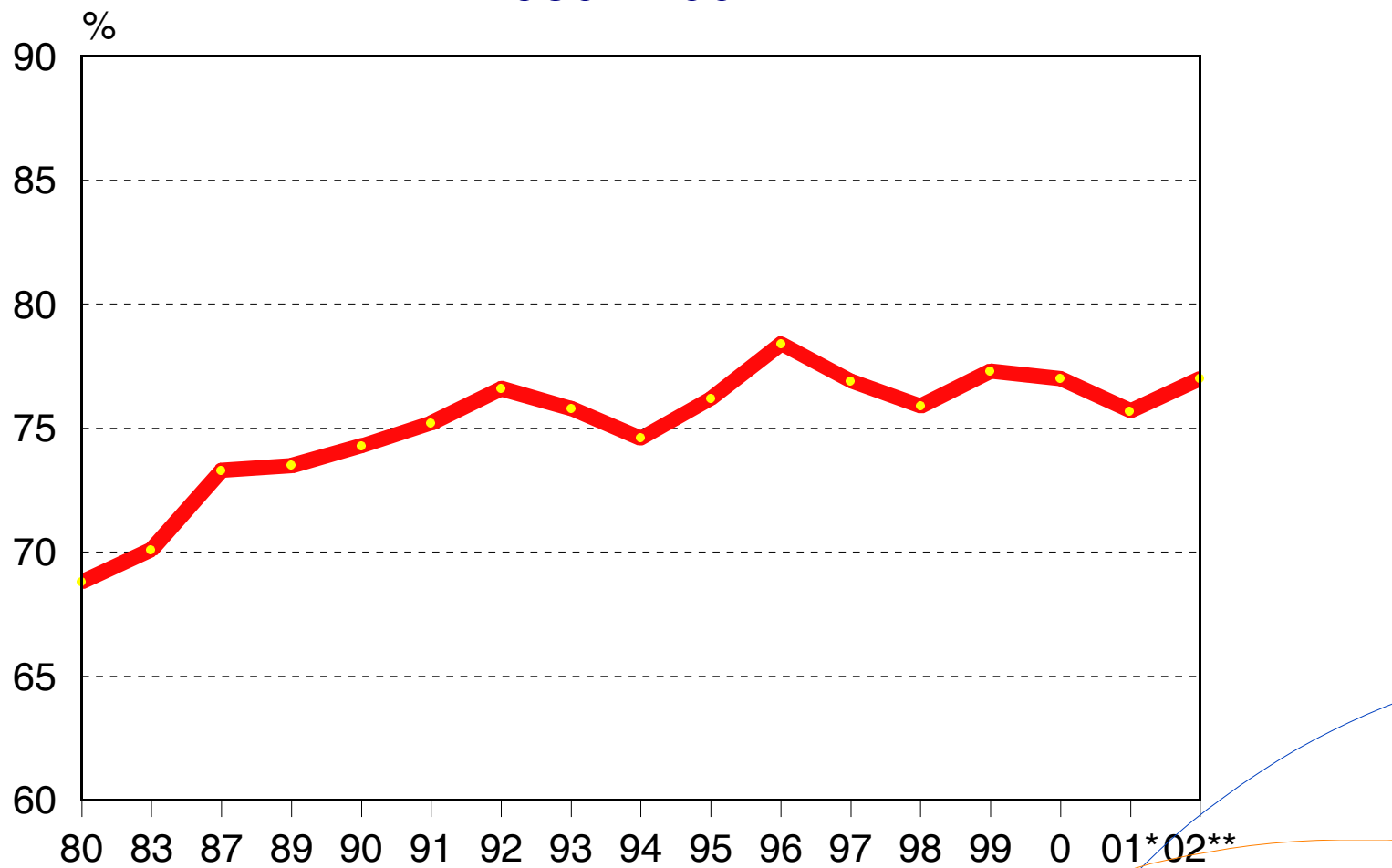
TOTAL NOMINAL LABOUR COSTS (industry) 1997-2003, change compared to same quarter a year earlier



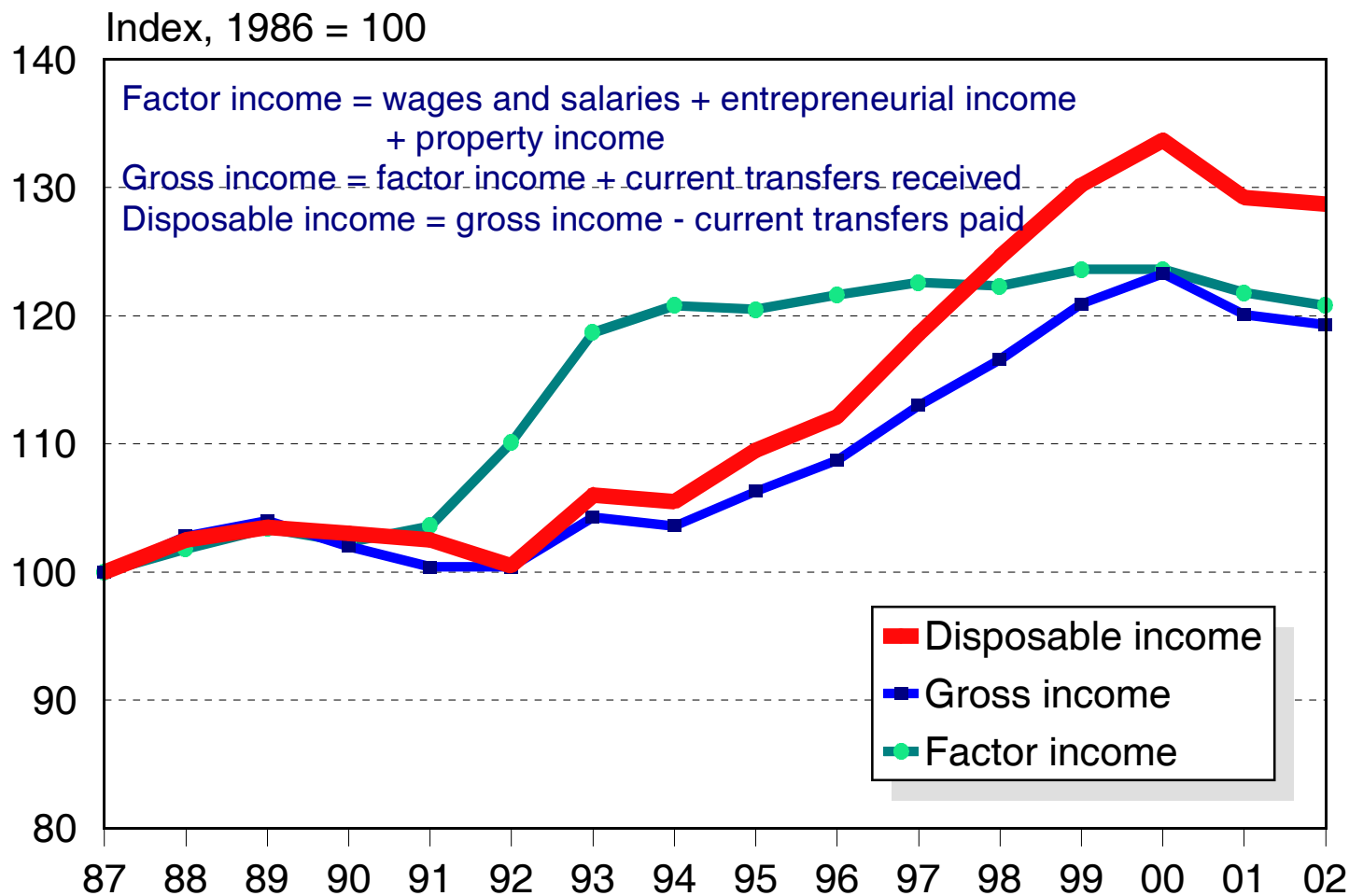
LABOUR INCOME AS A PERCENTAGE OF NATIONAL INCOME 1980 - 2004



WOMENS' ANNUAL EARNINGS AS A PERCENTAGE OF MENS' ANNUAL EARNINGS 1980 - 2002

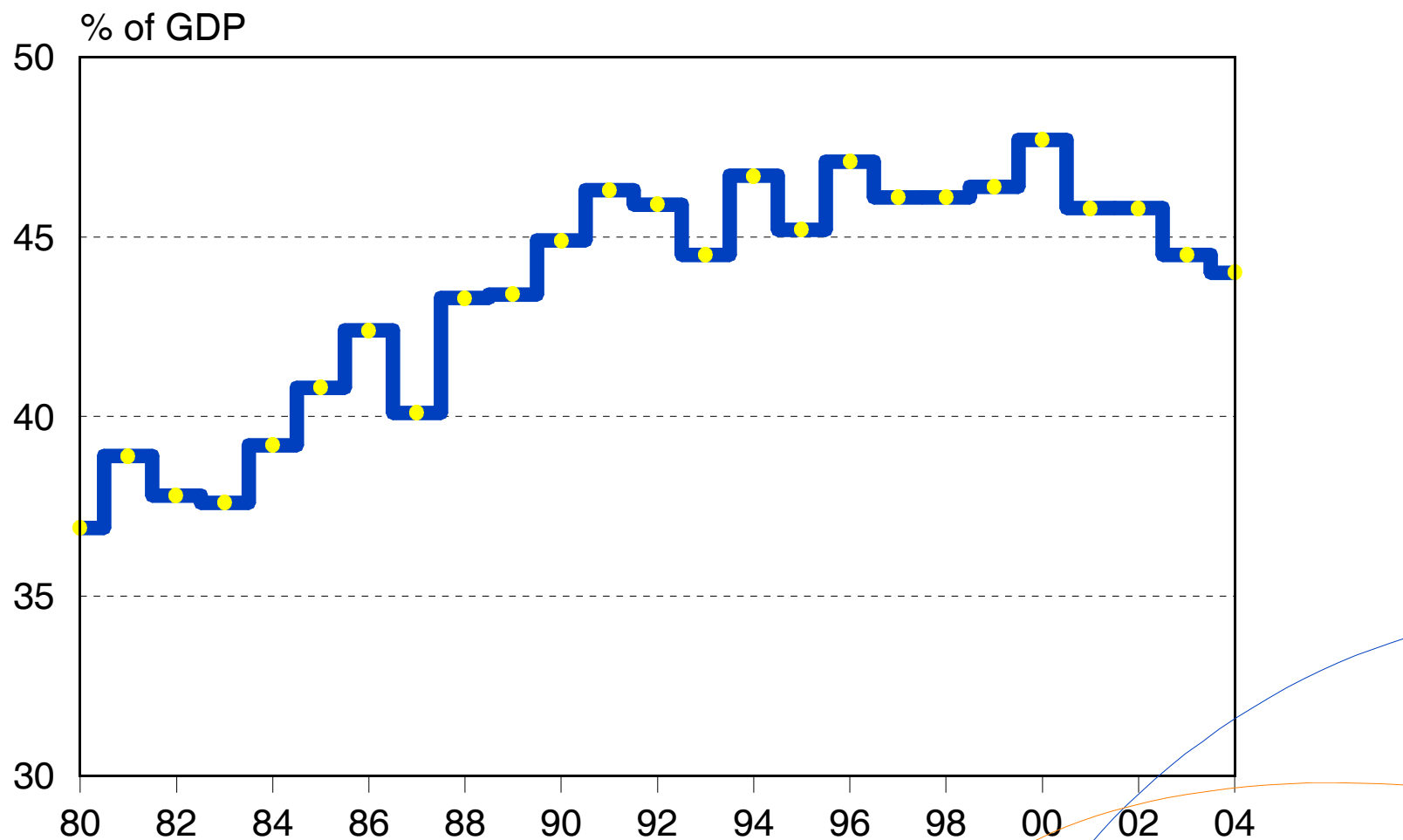


DISTRIBUTION OF EQUIVALENT HOUSEHOLD DISPOSABLE INCOME 1987 - 2002

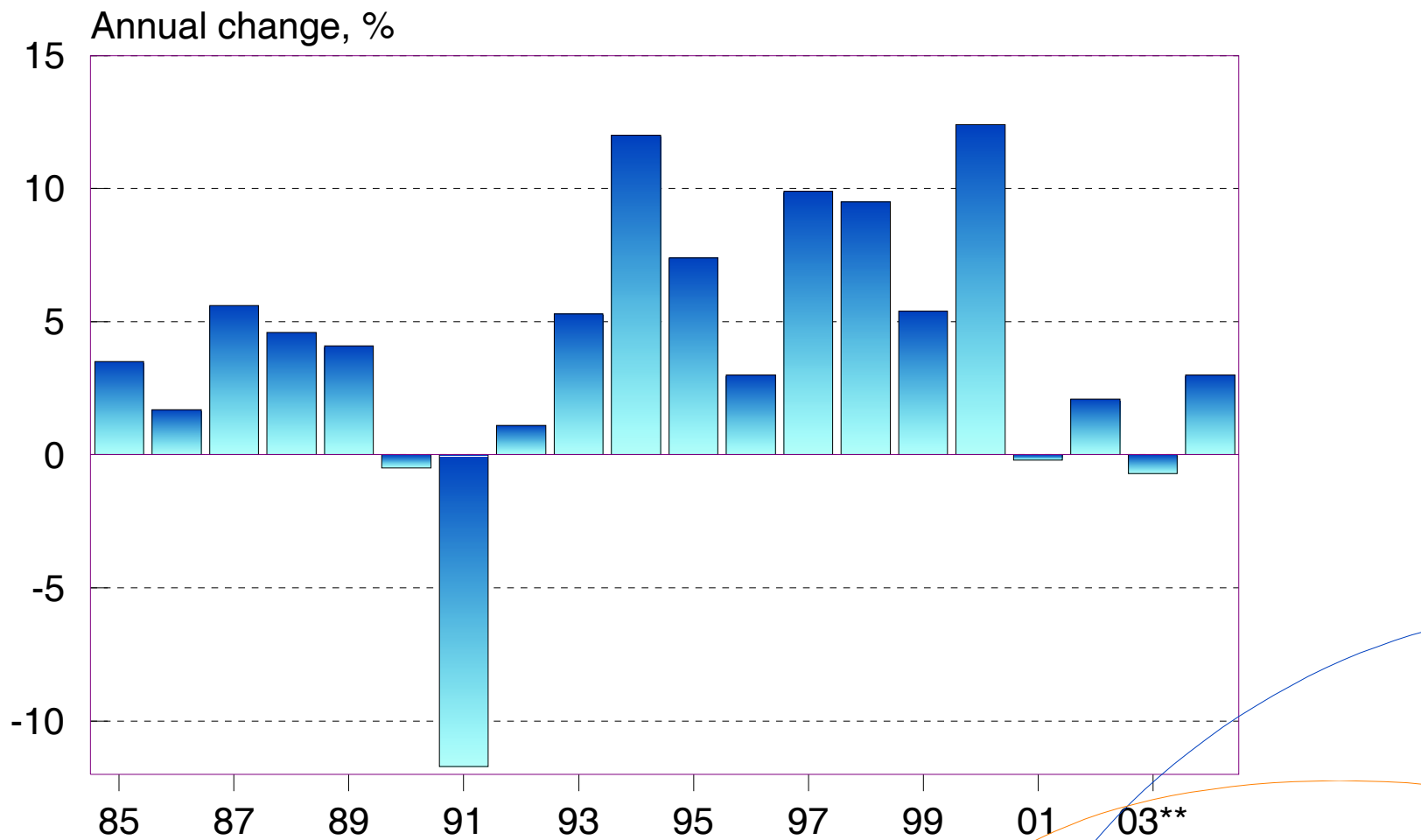


Index is based on the gini-coefficient, a higher value of the gini-coefficient implies a more unequal income distribution

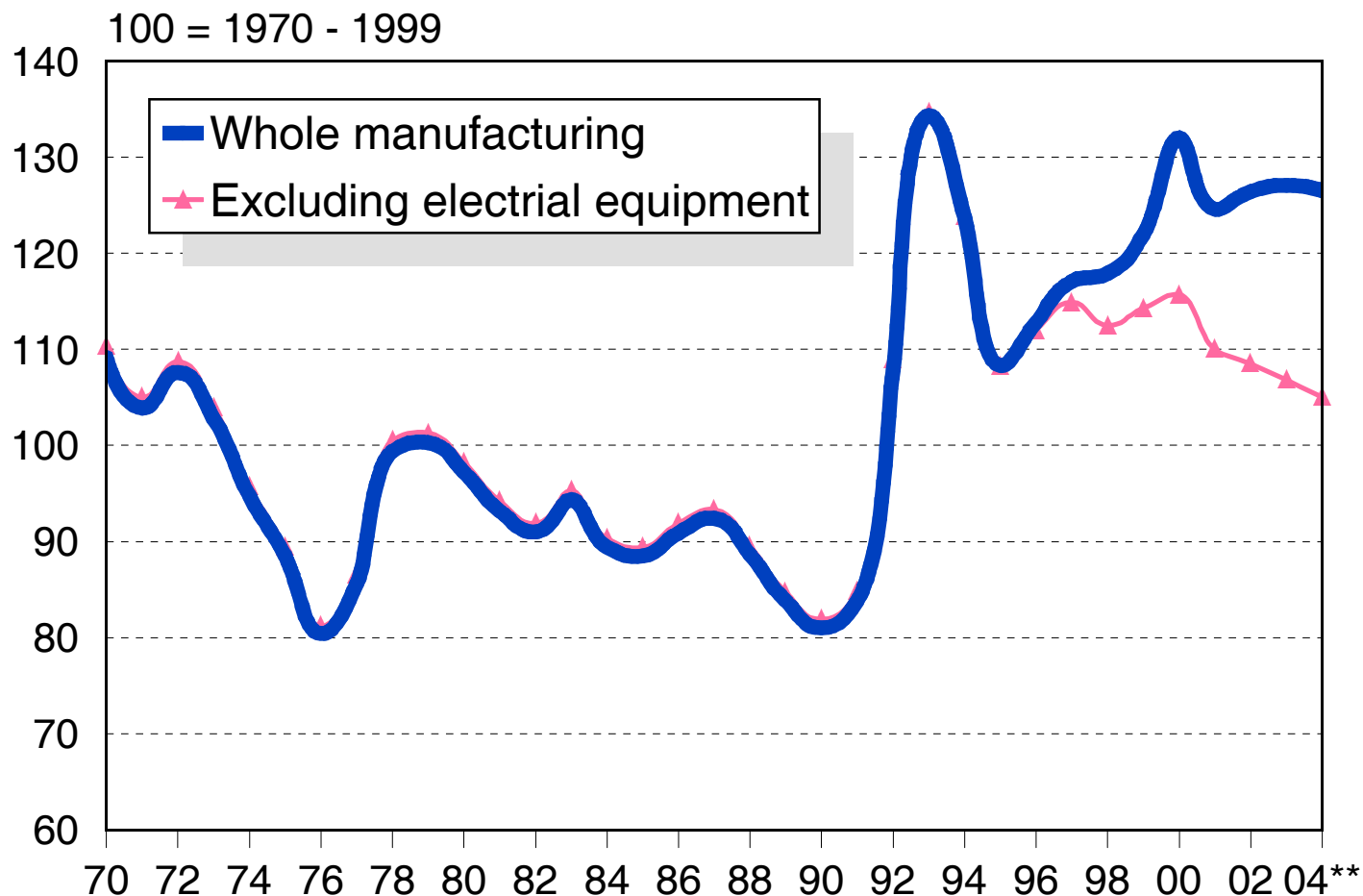
TAX RATE 1980 - 2004



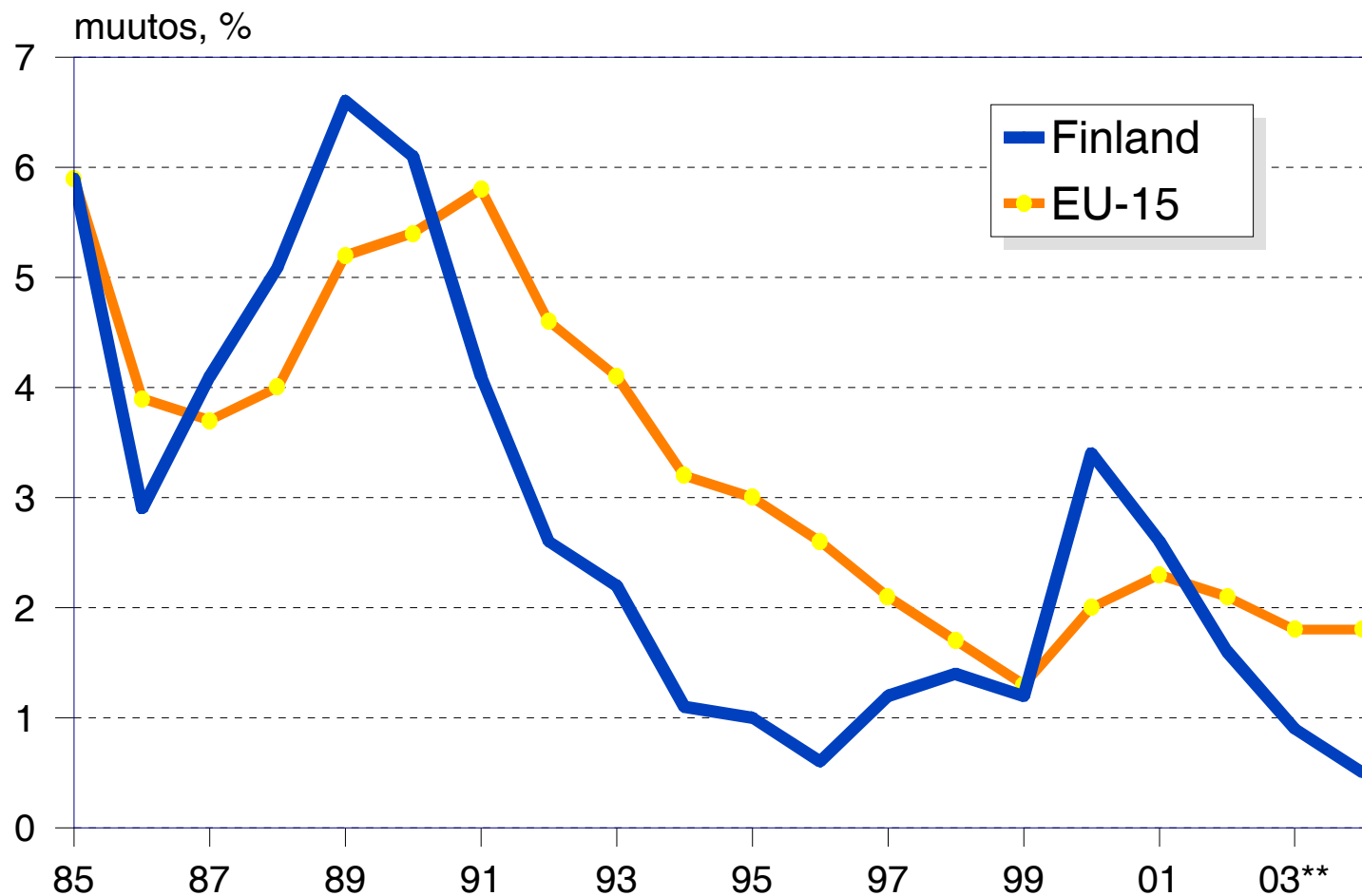
MANUFACTURING PRODUCTION 1985 - 2004



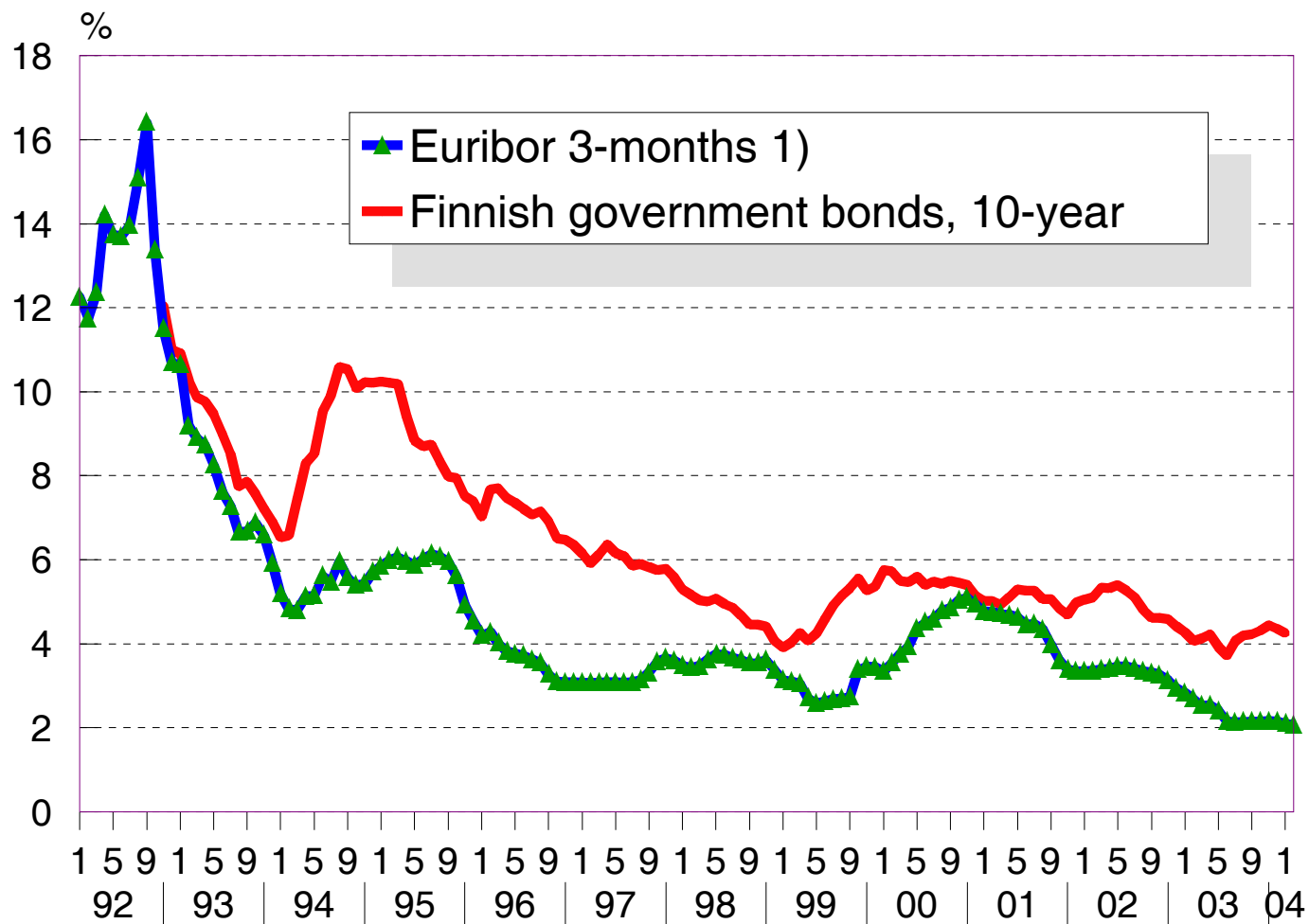
PRICE COMPETITIVENESS OF MANUFACTURING INDUSTRY IN WESTERN MARKETS 1972 - 2004 OECD/Finland



CONSUMER PRICES IN FINLAND AND EU-COUNTRIES 1985 - 2004



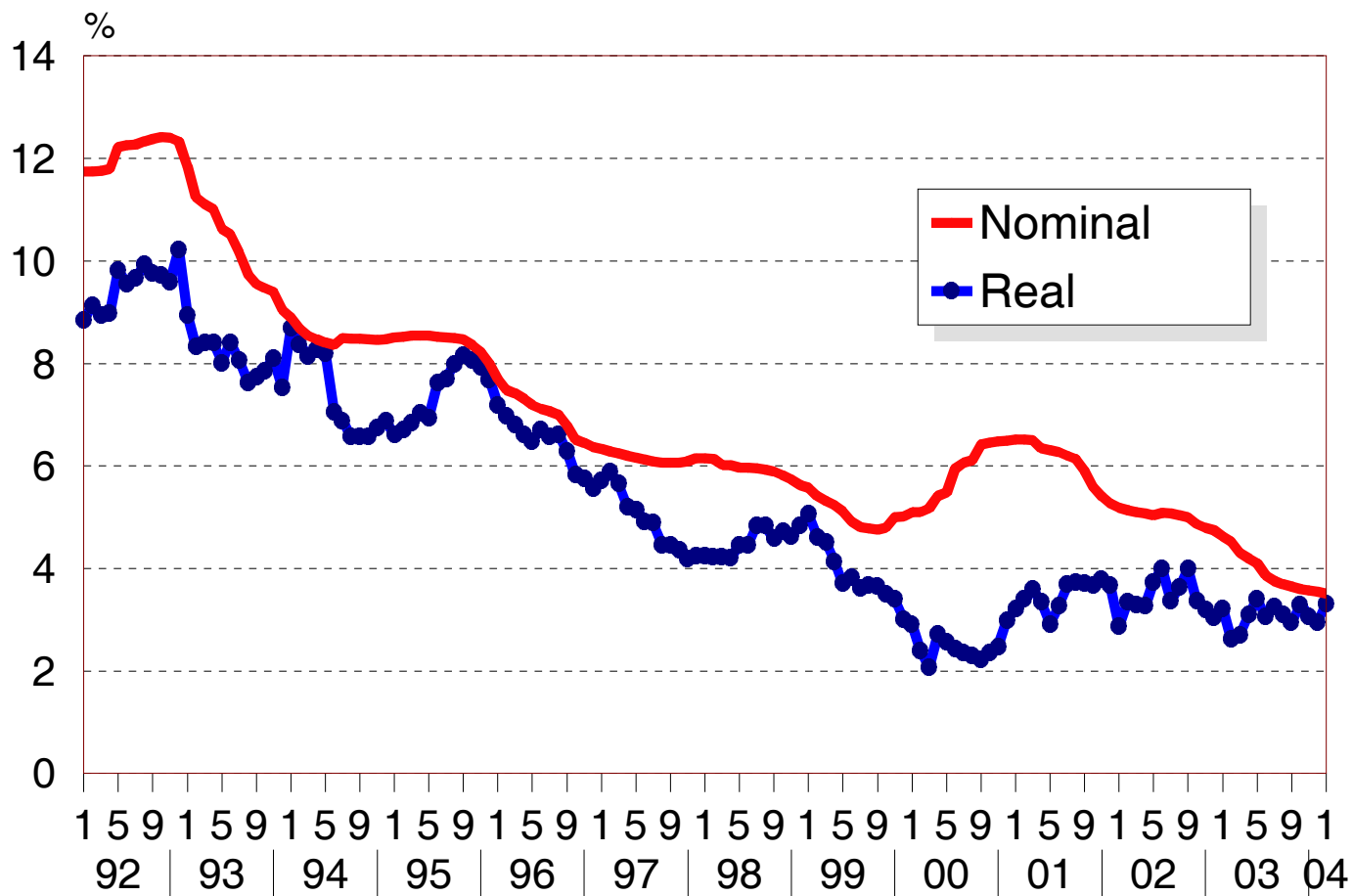
INTEREST RATES IN FINLAND 1992:1 - 2004:2



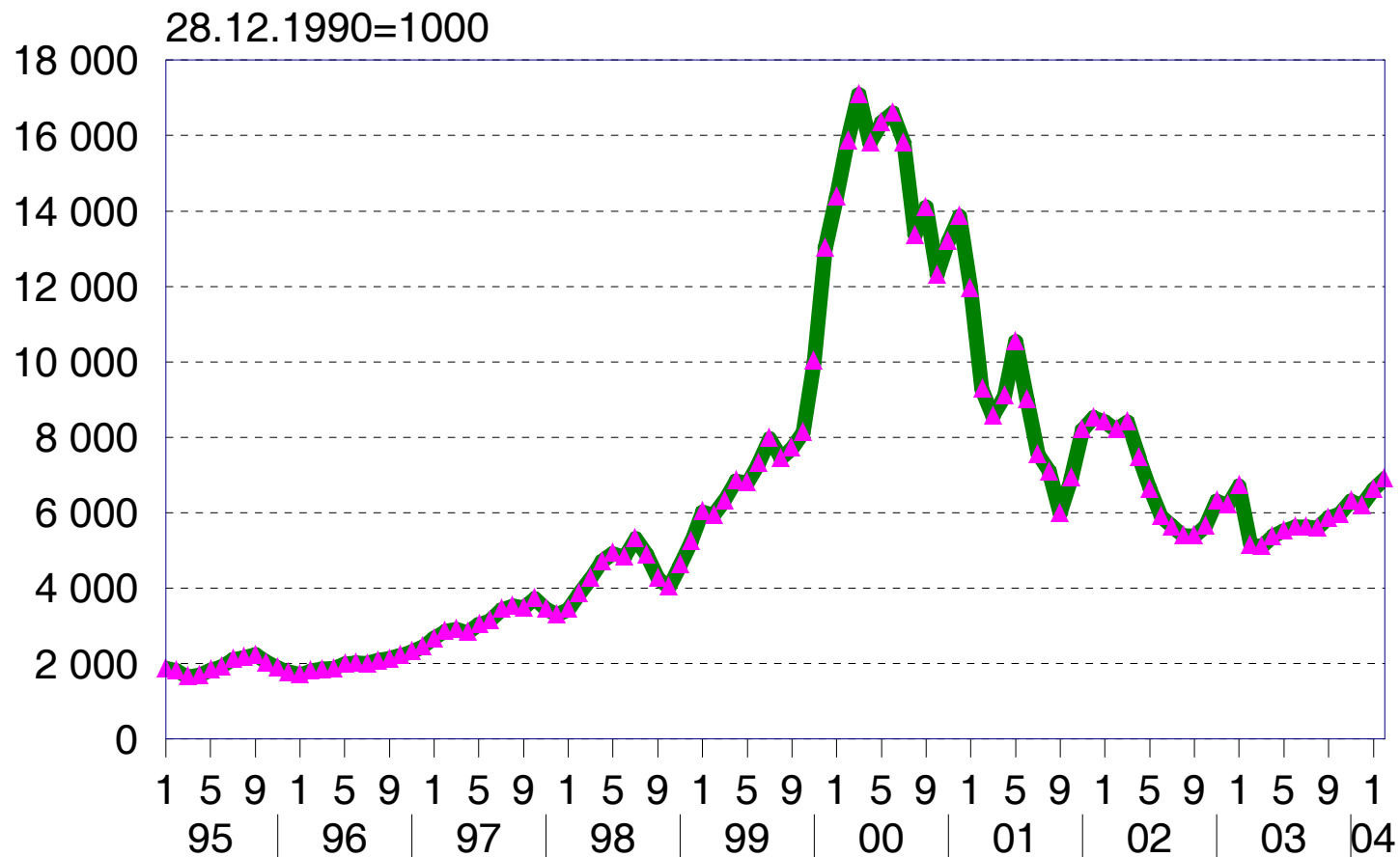
1) 1992 - 98 Helibor
 14.4.2004/**SAK**/TL

Source: Bank of Finland

REAL AVERAGE LENDING RATE FOR HOUSING LOANS 1992:1 - 2004:1

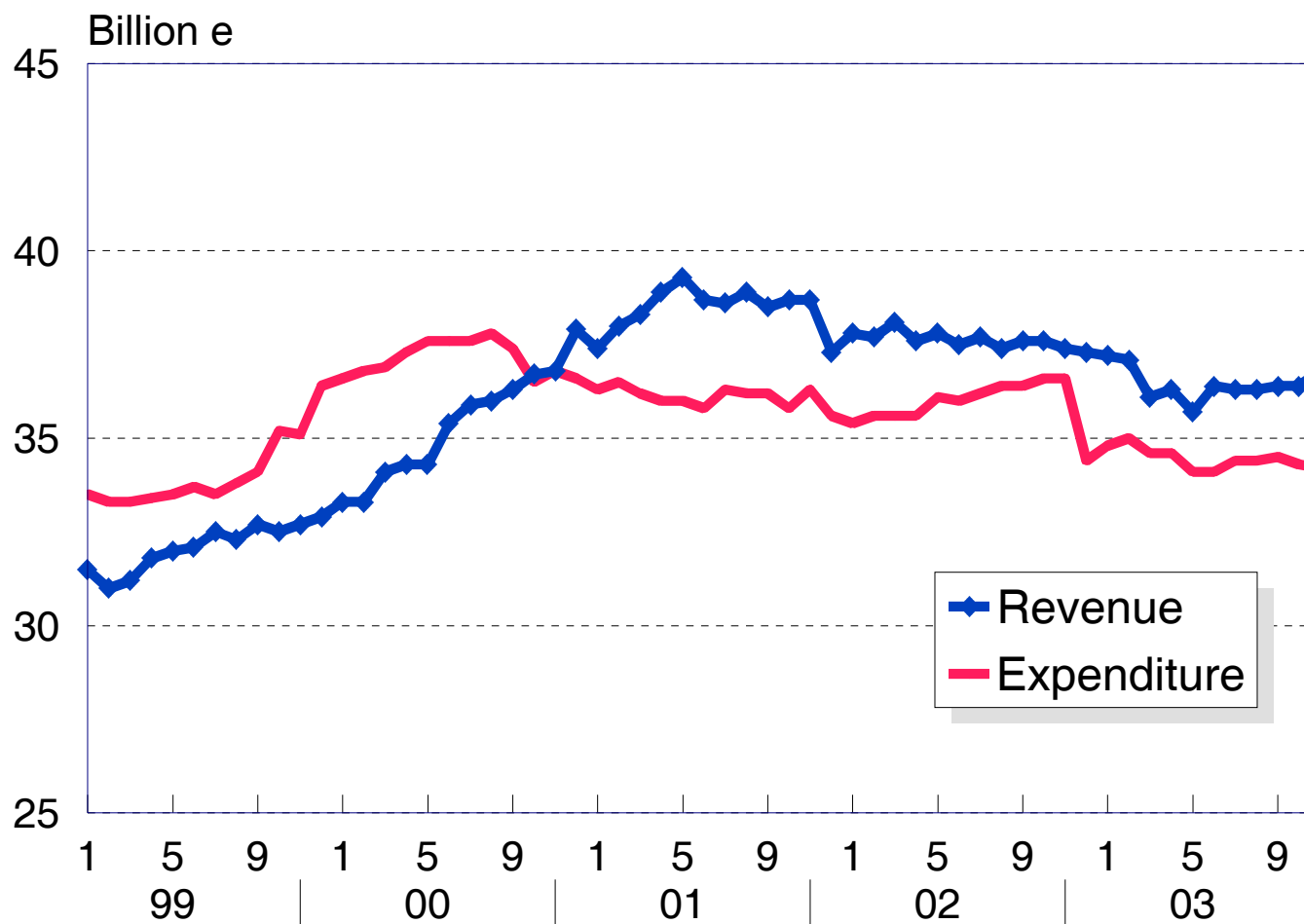


HELSINKI STOCK INDEX (HEX) 1995:1 -2004:2

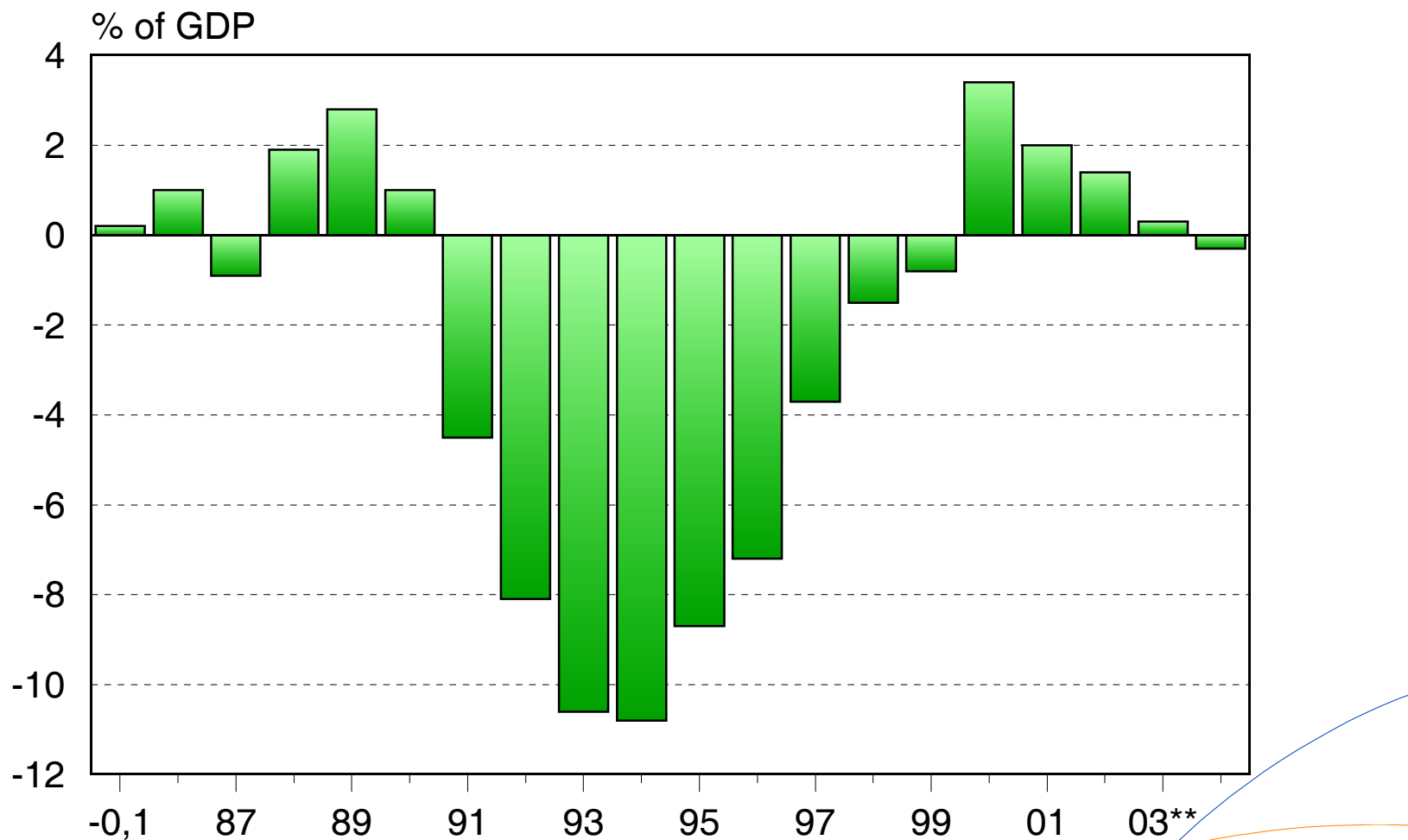


CENTRAL GOVERNMENT REVENUES AND EXPENDITURES 1999 - 2003:11

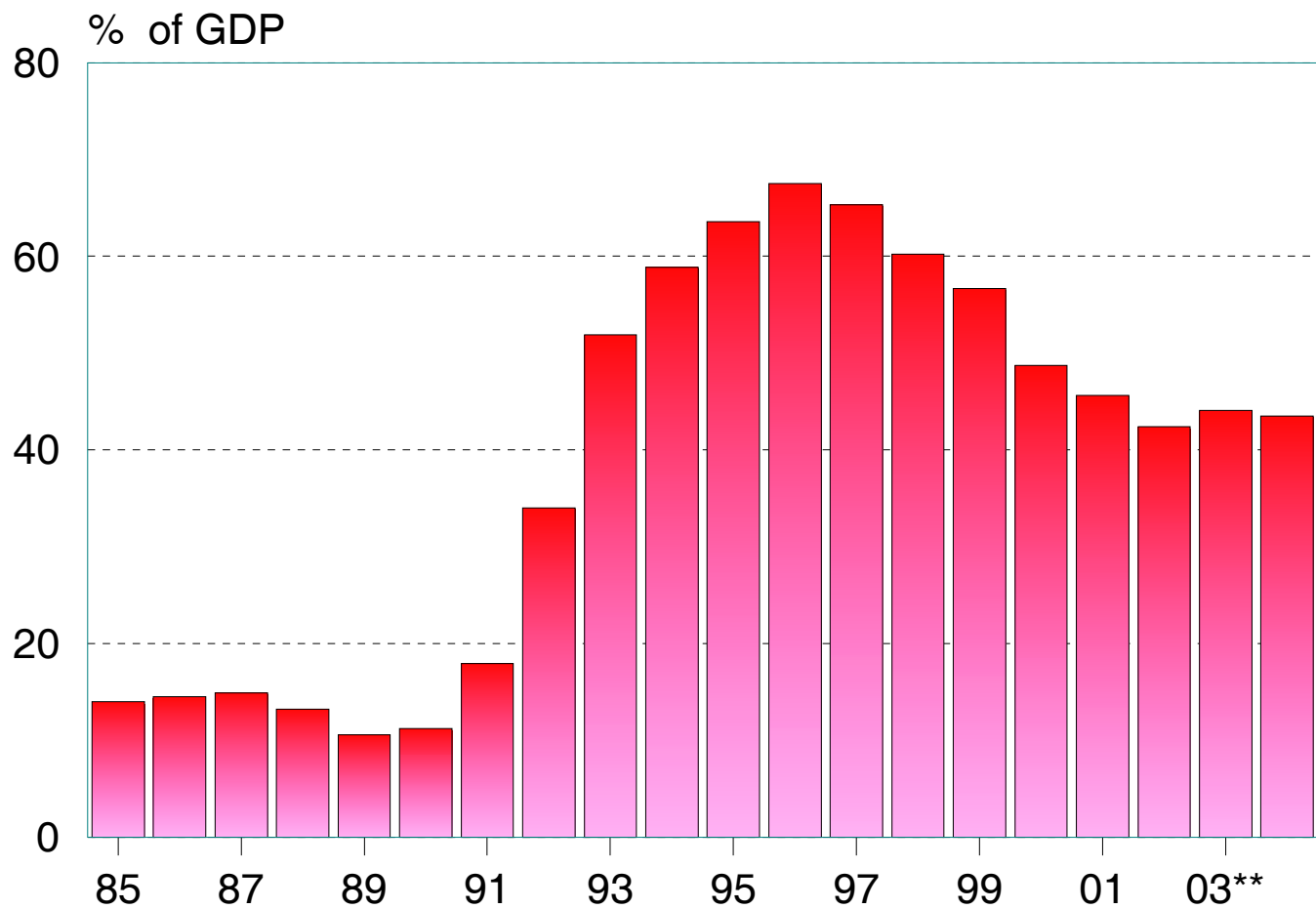
Before financial transactions, 12-month moving sum



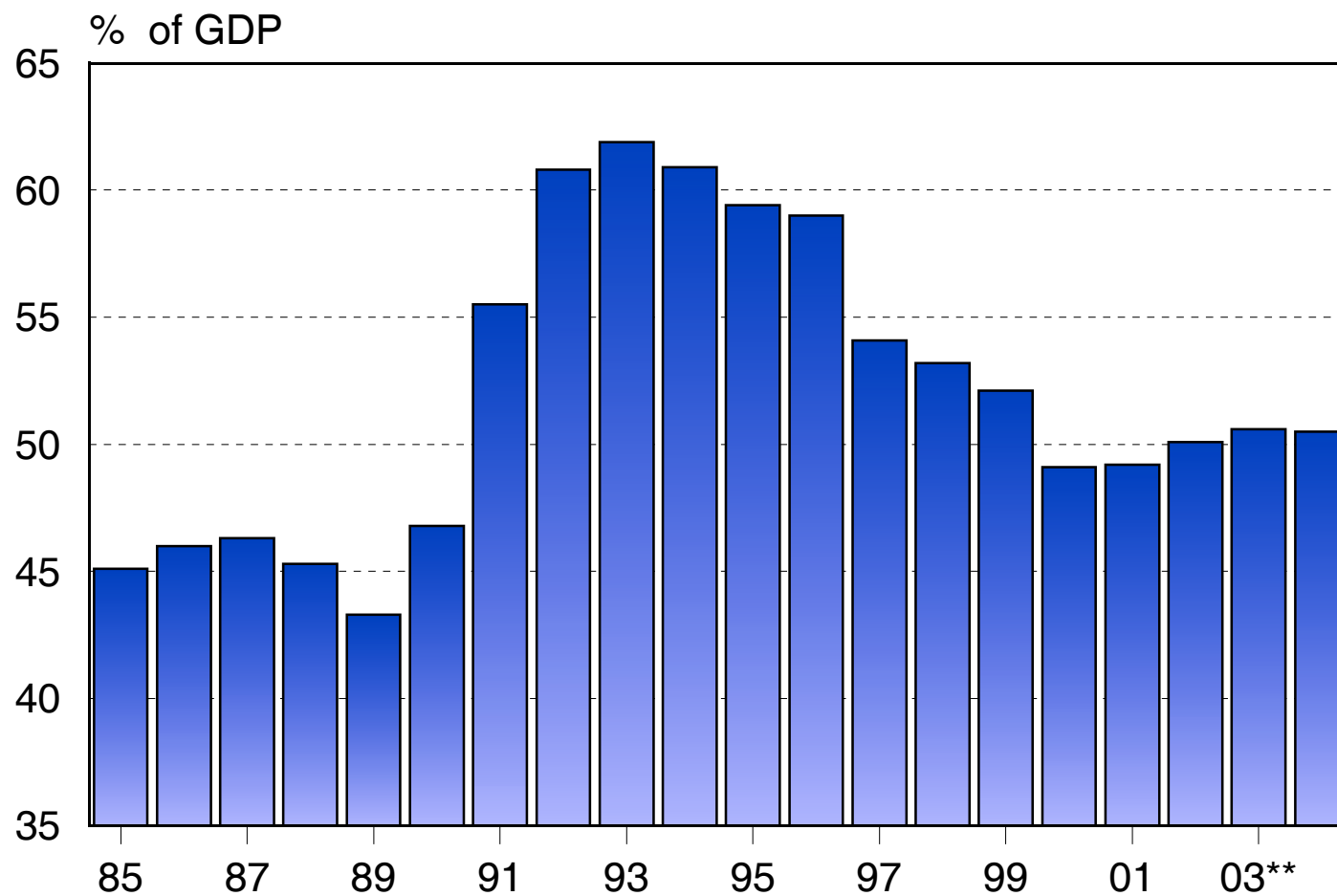
CENTRAL GOVERNMENT NET LENDING 1985 - 2004



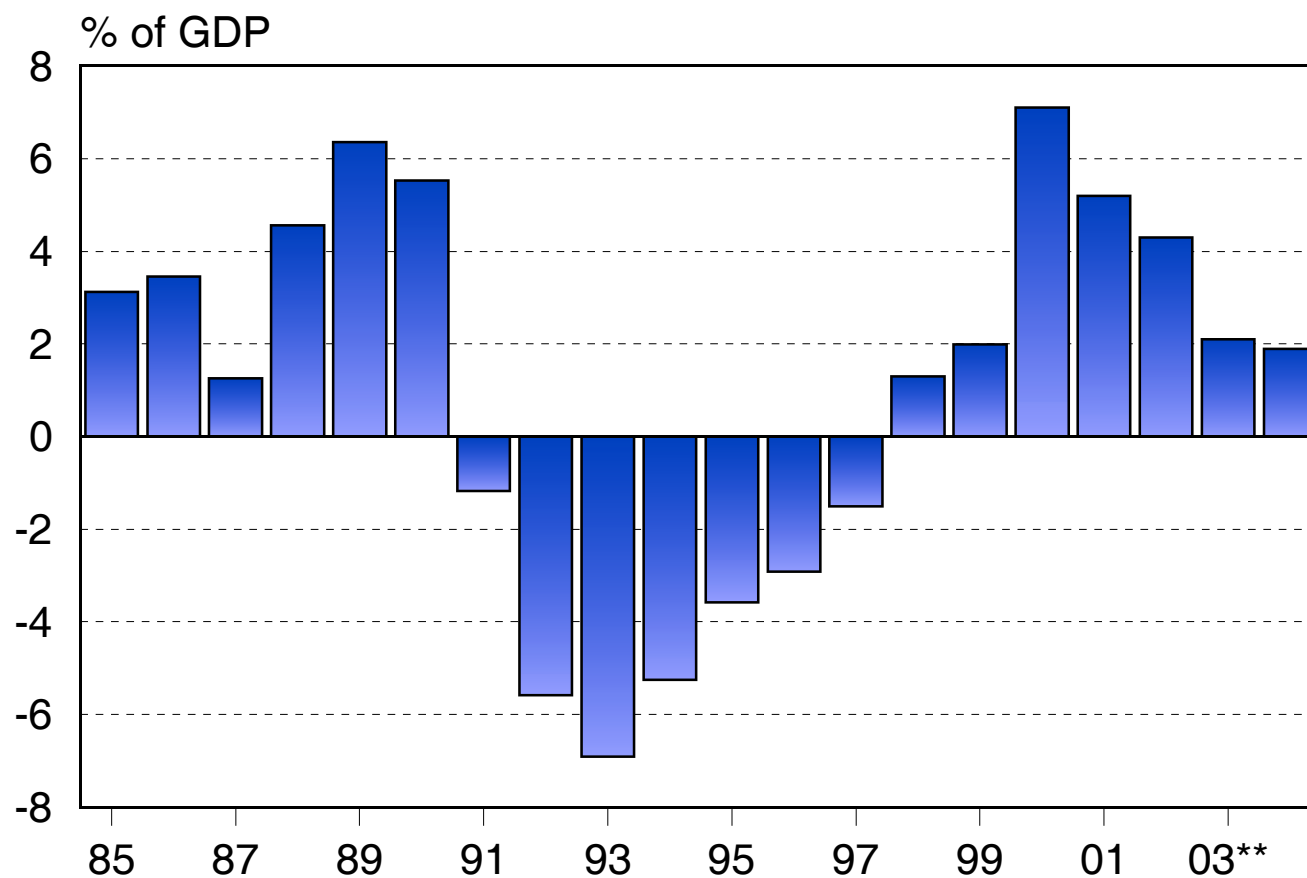
CENTRAL GOVERNMENT DEBT 1985 - 2004



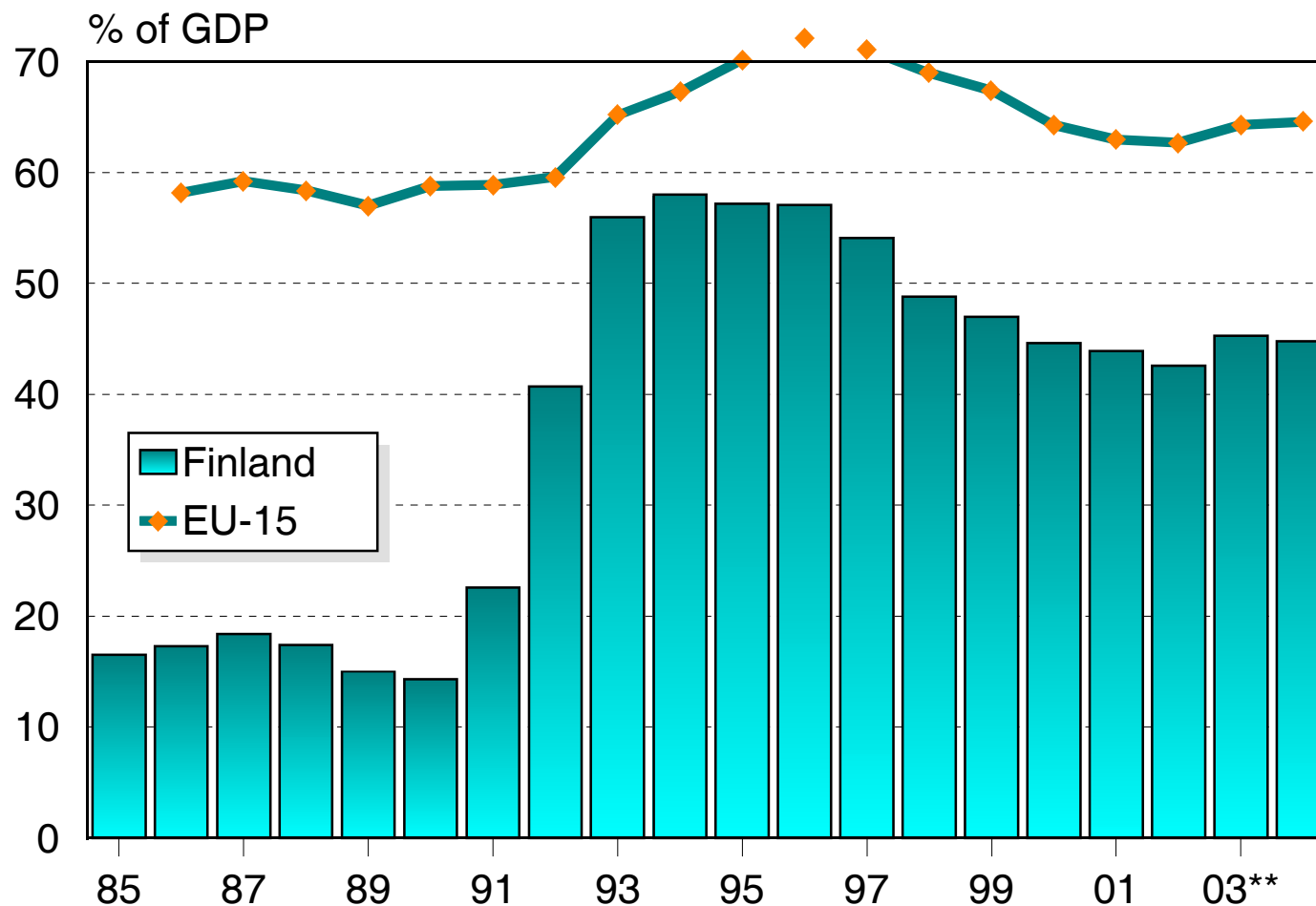
GENERAL GOVERNMENT EXPENDITURE 1985 - 2004



GENERAL GOVERNMENT NET LENDING (EMU) 1985 -2004



GOVERNMENT GROSS DEBT (EMU) 1985 - 2004



KEY FORECAST FIGURES

	change, %				
	2000	2001	2002*	2003**	2004**
GDP	5,1	1,1	2,3	1,9	2,7
IMPORTS	16,9	0,2	1,9	0,9	3,4
EXPORTS	19,3	-0,8	5,1	1,3	4,3
CONSUMPTION	2,2	2	2,2	2,7	2,3
Private	3,1	1,8	1,5	3,6	2,7
Public	0	2,4	3,8	0,7	1,4
INVESTMENT	4,1	3,9	-3,1	-2,3	1,5
Private	5,7	3,3	-4,6	-3,9	2,5
Public	-5,7	8,1	6,6	7,1	-3,1
Manuf. production, change in vol., %	12,4	-0,2	2,1	-0,7	3
Employment rate, %	66,9	67,7	67,7	67,3	67,5
Unemployment rate, %	9,8	9,1	9,1	9	8,8
Consumer prices, change, %	3,4	2,6	1,6	0,9	0,5
Wage and salary earnings, change, %	4,1	4,5	3,5	3,9	3,4
Current account, % of GDP	7,2	6,9	7,4	5,5	5,6
Net foreign liabilities, % of GDP	13,6	5,6	2	-6,2	-11,6
Interest rates, Helibor/Euribor 3-month, %	4,4	4,3	3,3	2,4	2,2
Interest rates, Gov. bonds, 10-year, %	5,5	5	5	4,1	4,5
Public expenditure, % of GDP	49,1	49,2	50,1	50,6	50,5
Tax ratio, % of GDP	47,7	45,8	45,8	44,5	44
Central government debt, % of GDP	48,7	45,6	42,4	44,1	43,5
Gross public debt (EMU), % of GDP	44,6	43,9	42,6	45,3	44,8
Central government net lending, % of GDP	3,4	2	1,4	0,3	-0,3
General government net lending (EMU), % of GDP	7,1	5,2	4,3	2,1	1,9