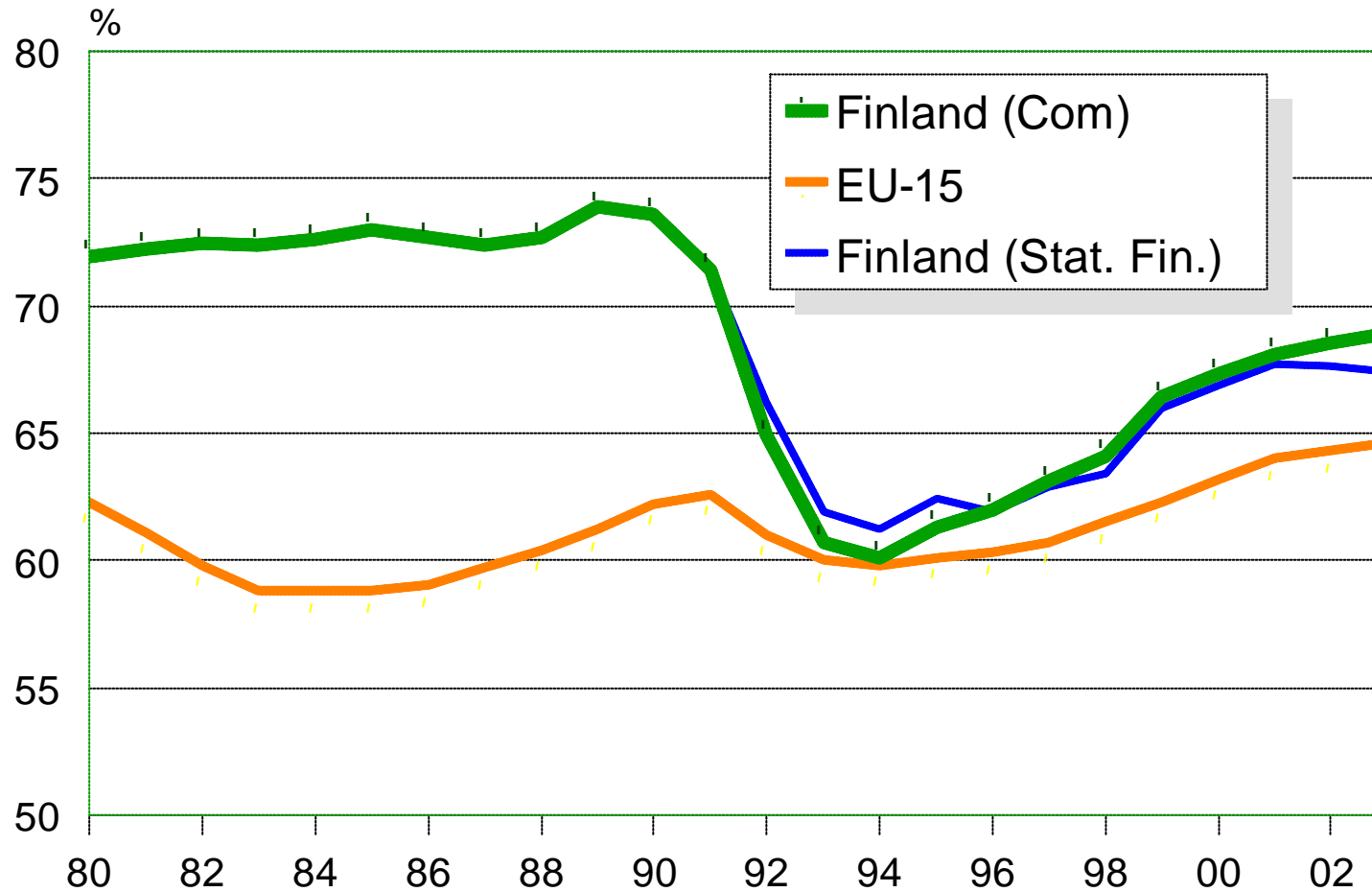


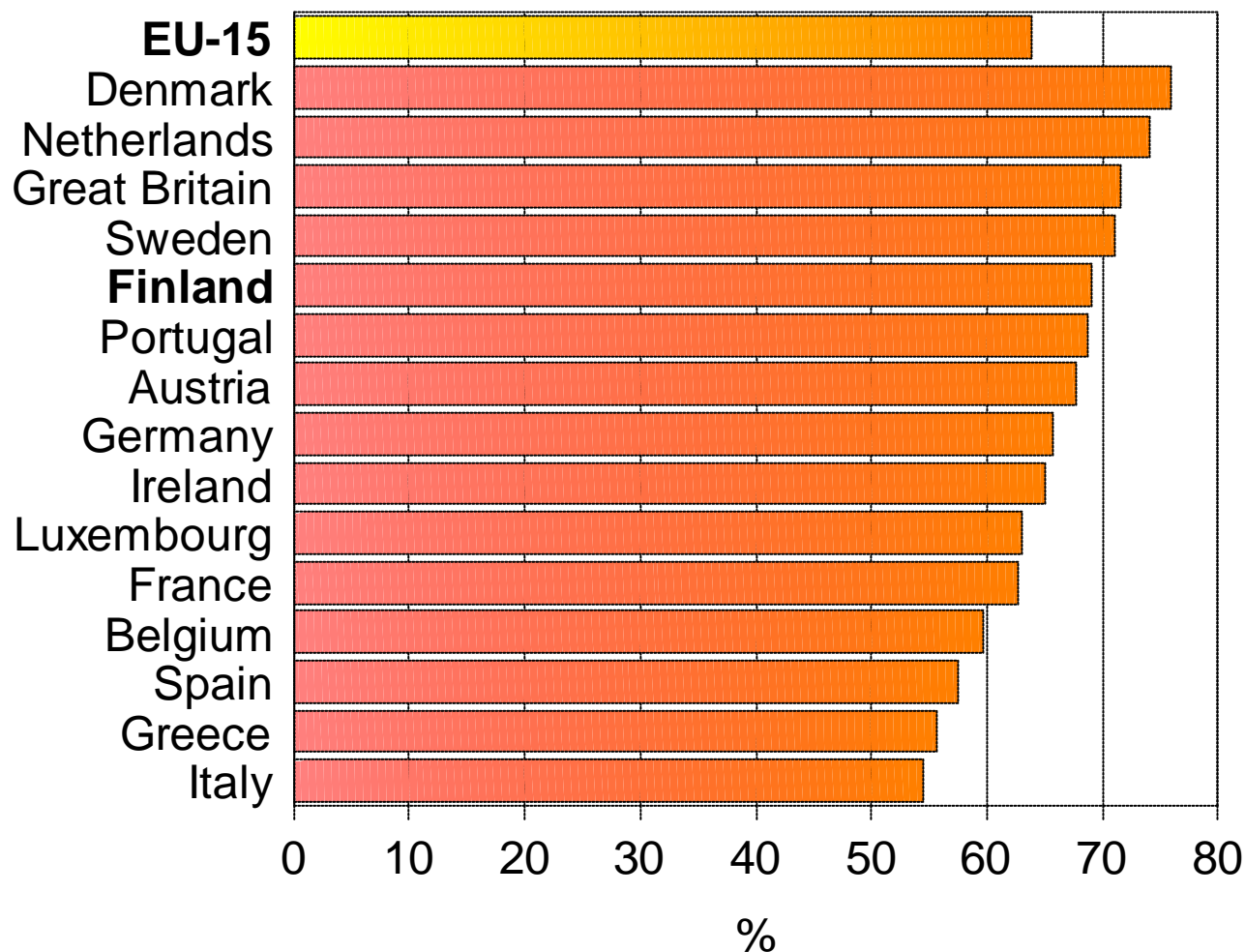
EMPLOYMENT RATE 1980 - 2003

Employed/Working age population (15 - 64 years)



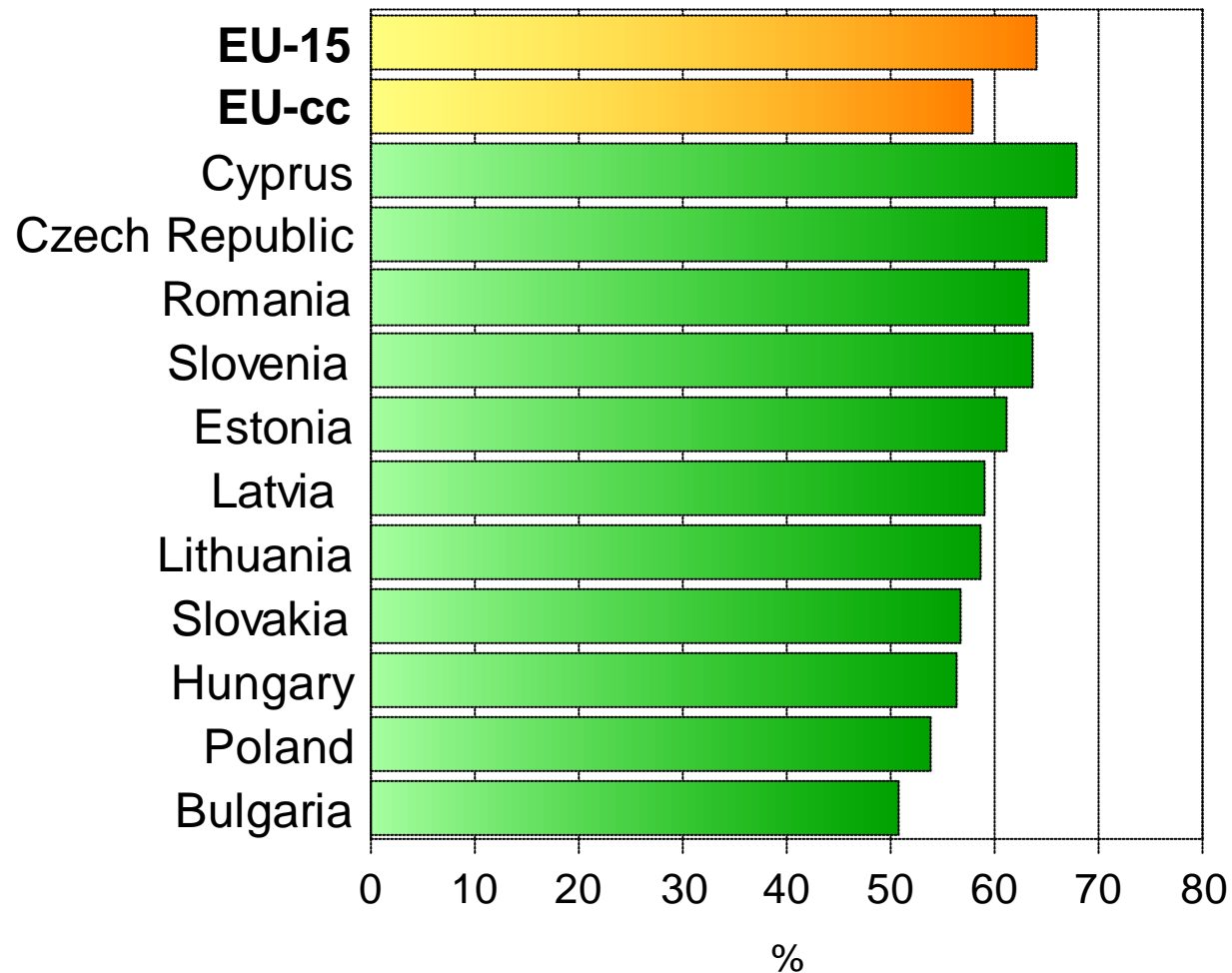
EMPLOYMENT RATE IN EU-COUNTRIES 2001

Employed/Working age population (15 - 64 years)

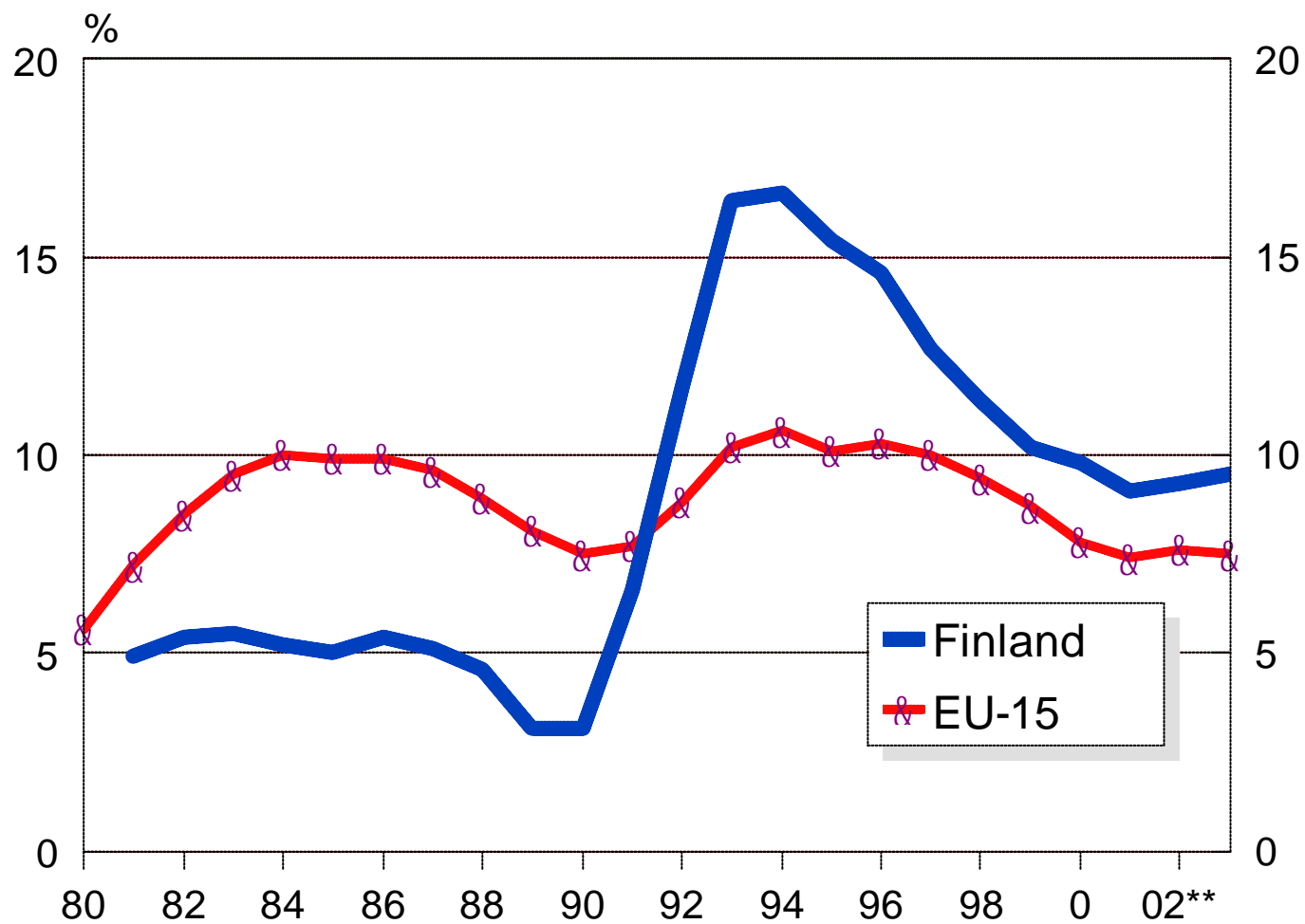


EMPLOYMENT RATE IN EU-CANDIDATE COUNTRIES 2001

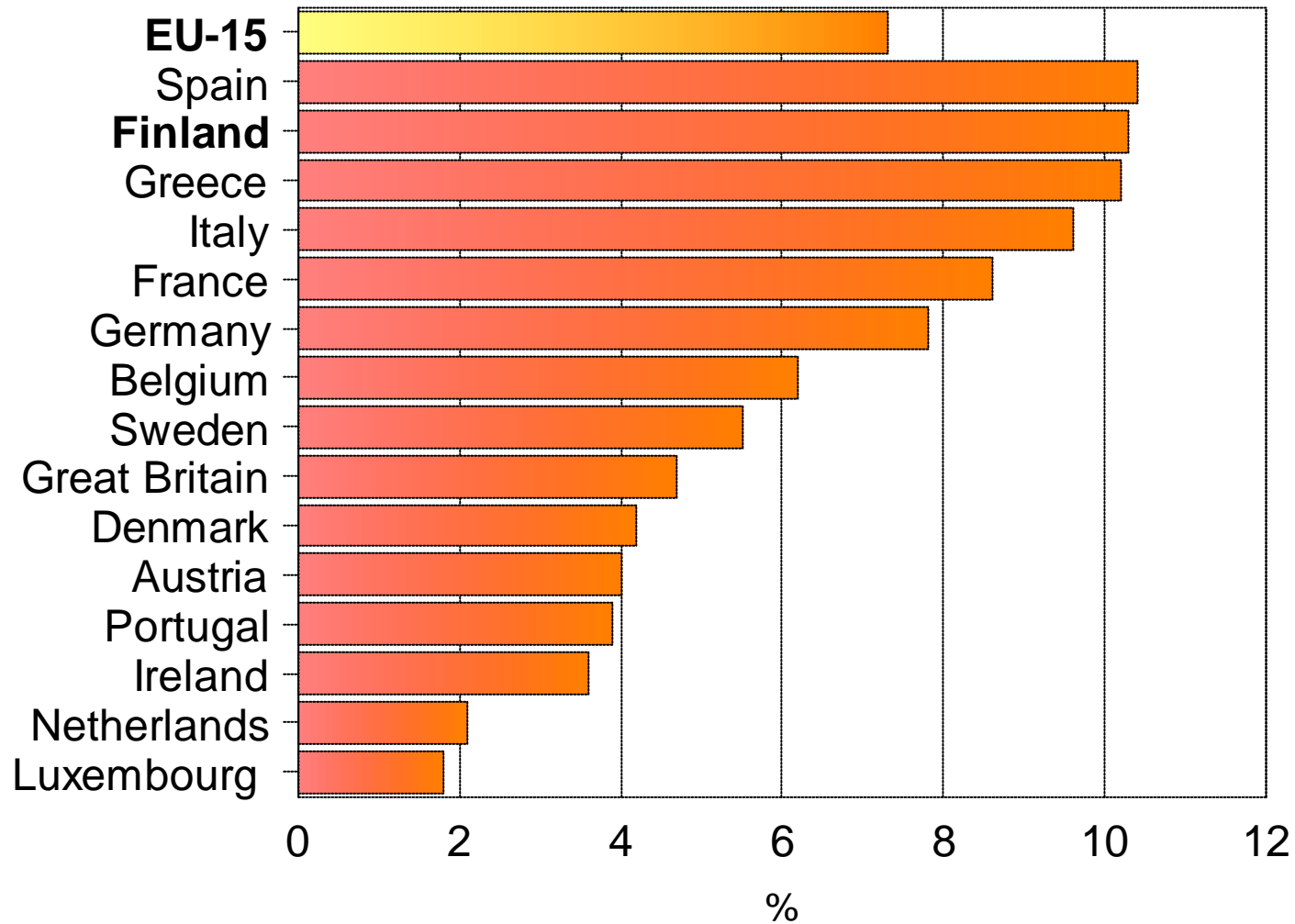
Employed/Working age population (15 - 64 years)



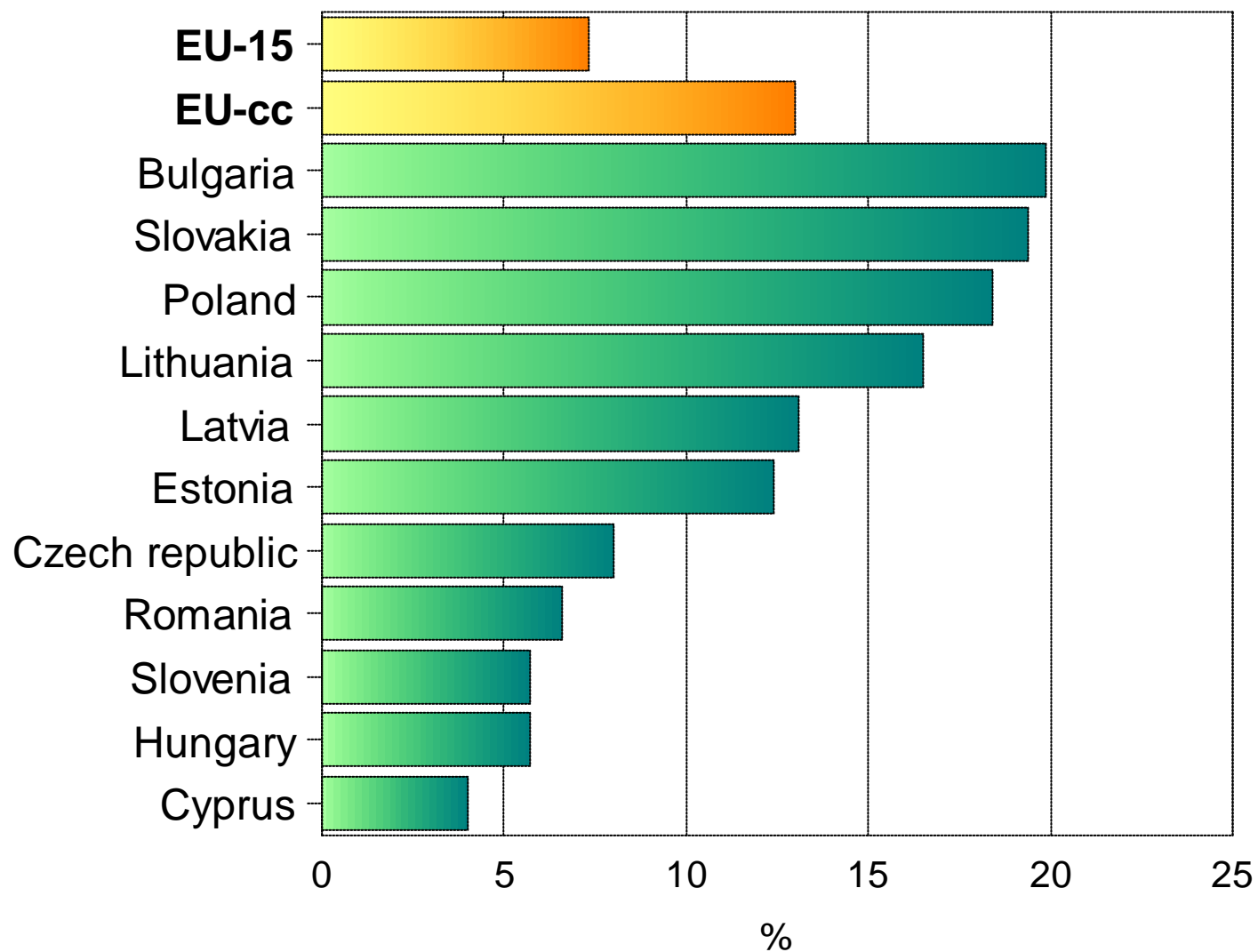
UNEMPLOYMENT RATE 1980 - 2003



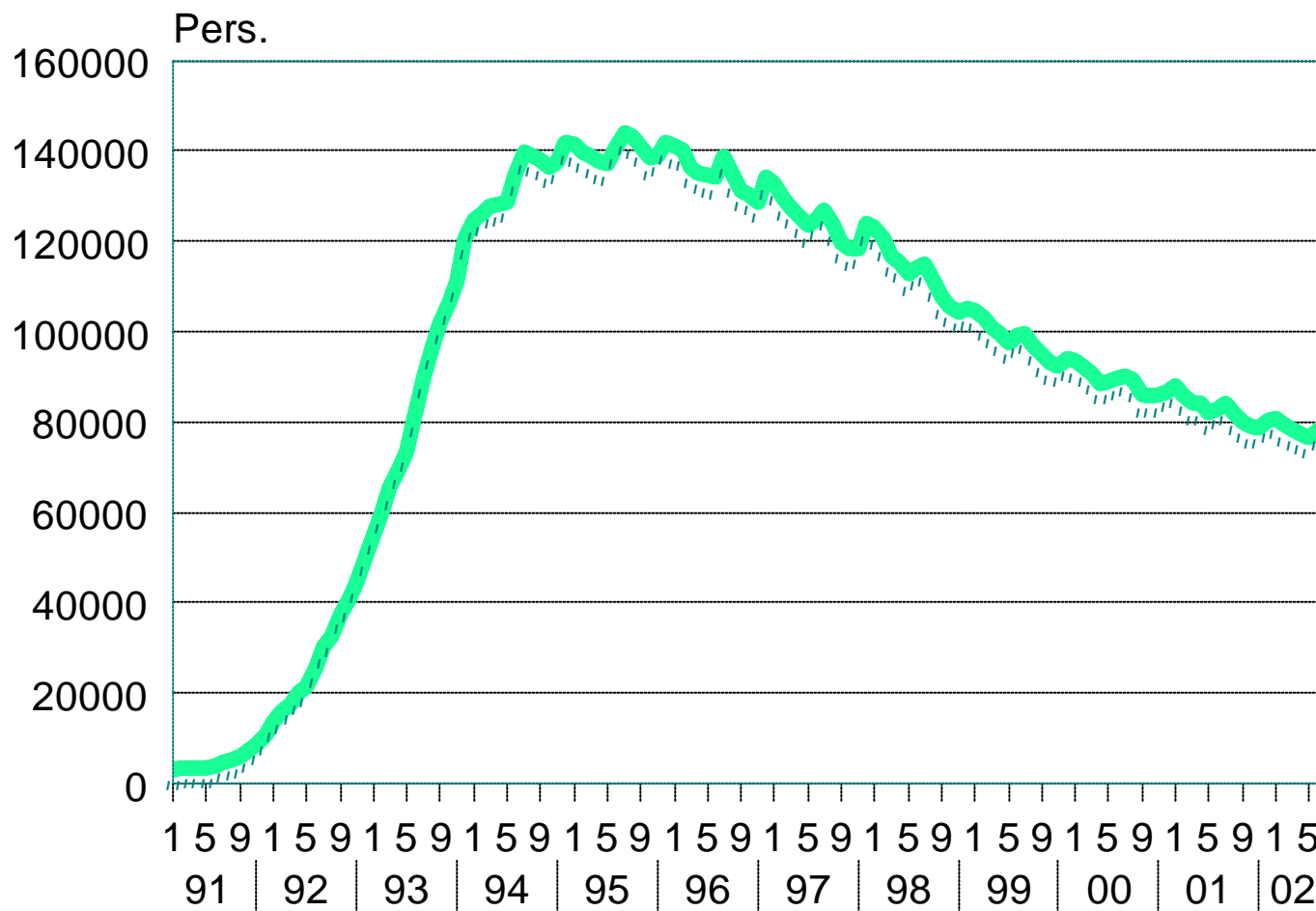
UNEMPLOYMENT RATE IN EU-COUNTRIES 2001



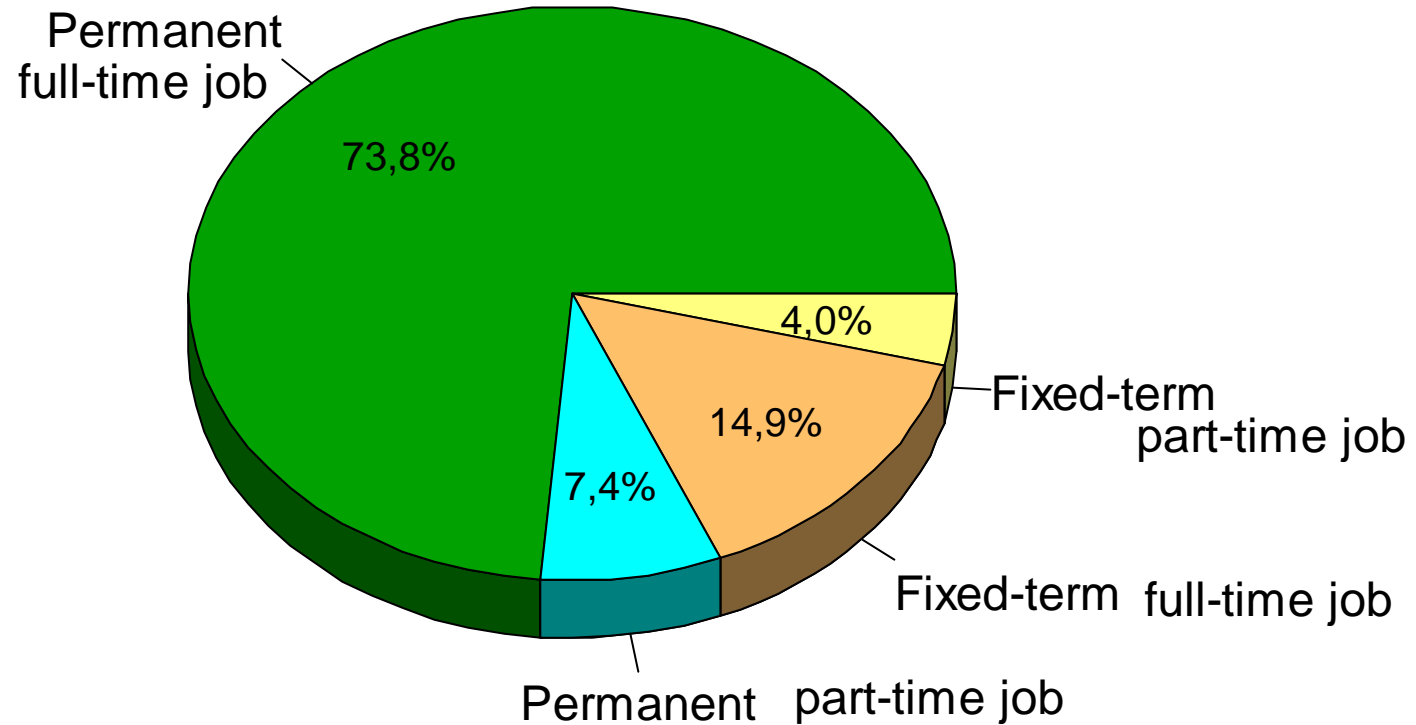
UNEMPLOYMENT RATE IN EU-CANDIDATE COUNTRIES 2001



LONG-TERM UNEMPLOYED 1991 - 2002:8



DIFFERENT TYPES OF EMPLOYEE RELATIONSHIPS, August 2002



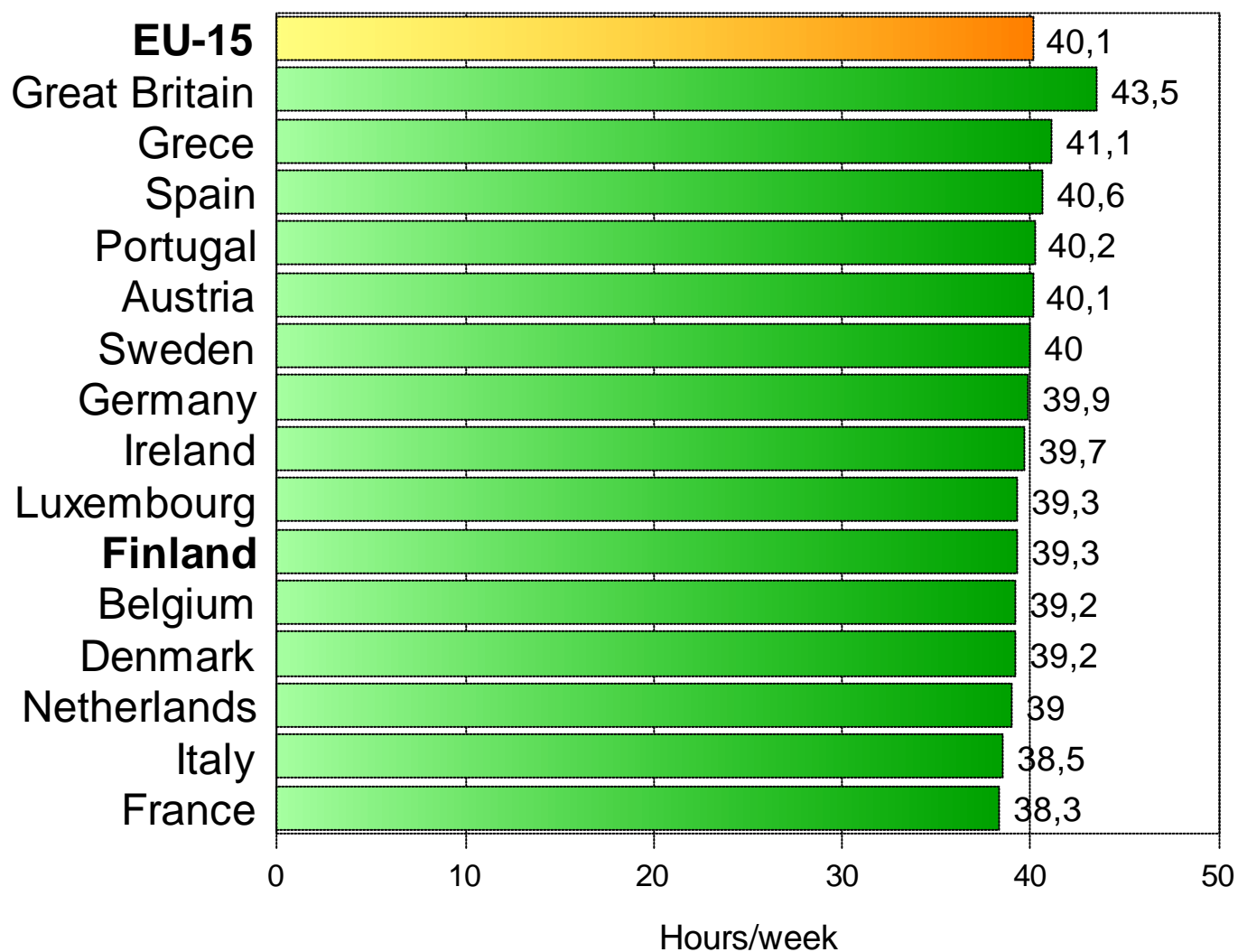
New employment contracts

(Signed during previous 12 months)

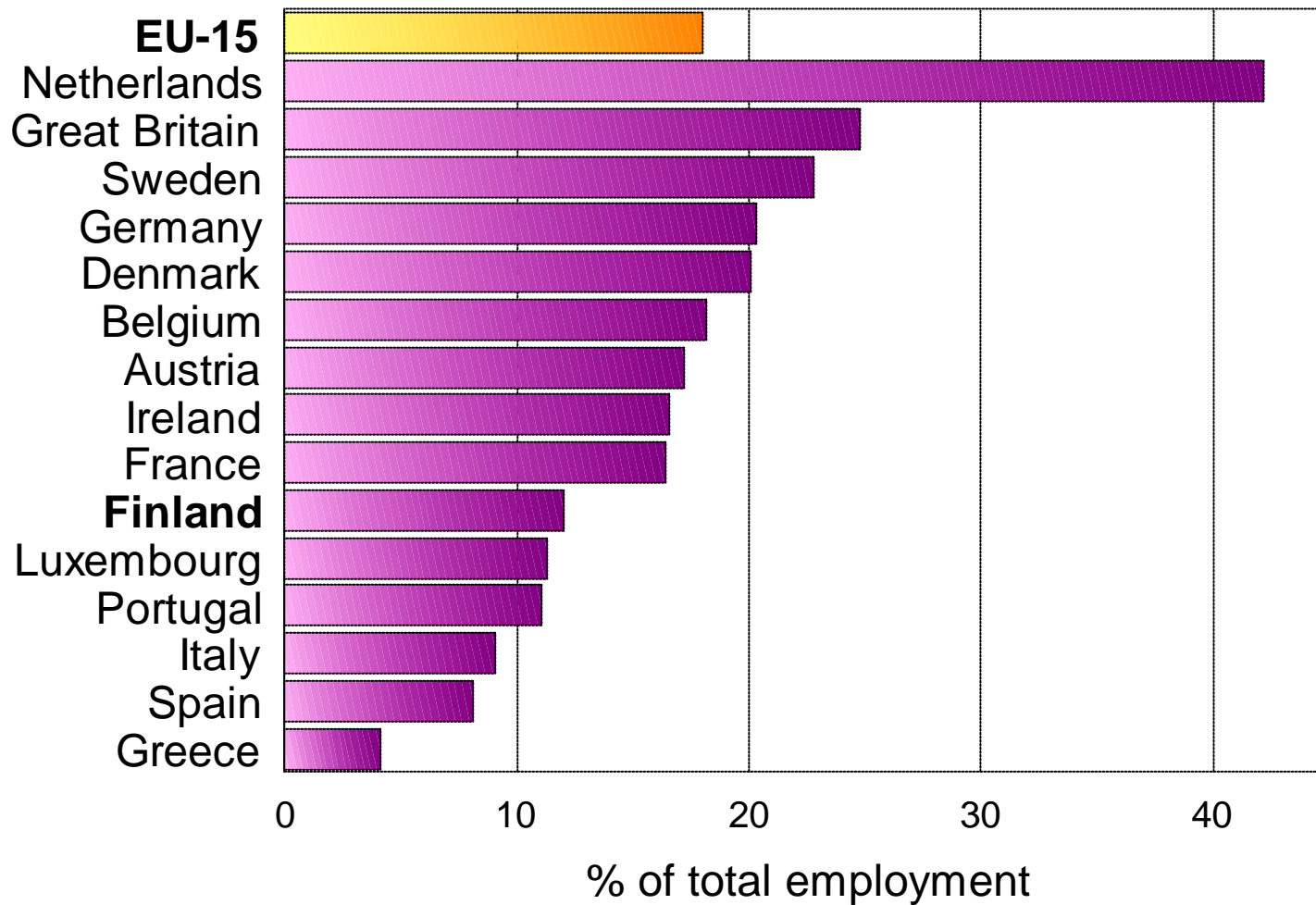
Permanent full-time job	32,5 %	} 67,5 %
Permanent part-time job	6,2 %	
Fixed-term full-time job	47,6 %	
Fixed-term part-time job	13,7 %	

USUAL HOURS WORKED PER WEEK 2001

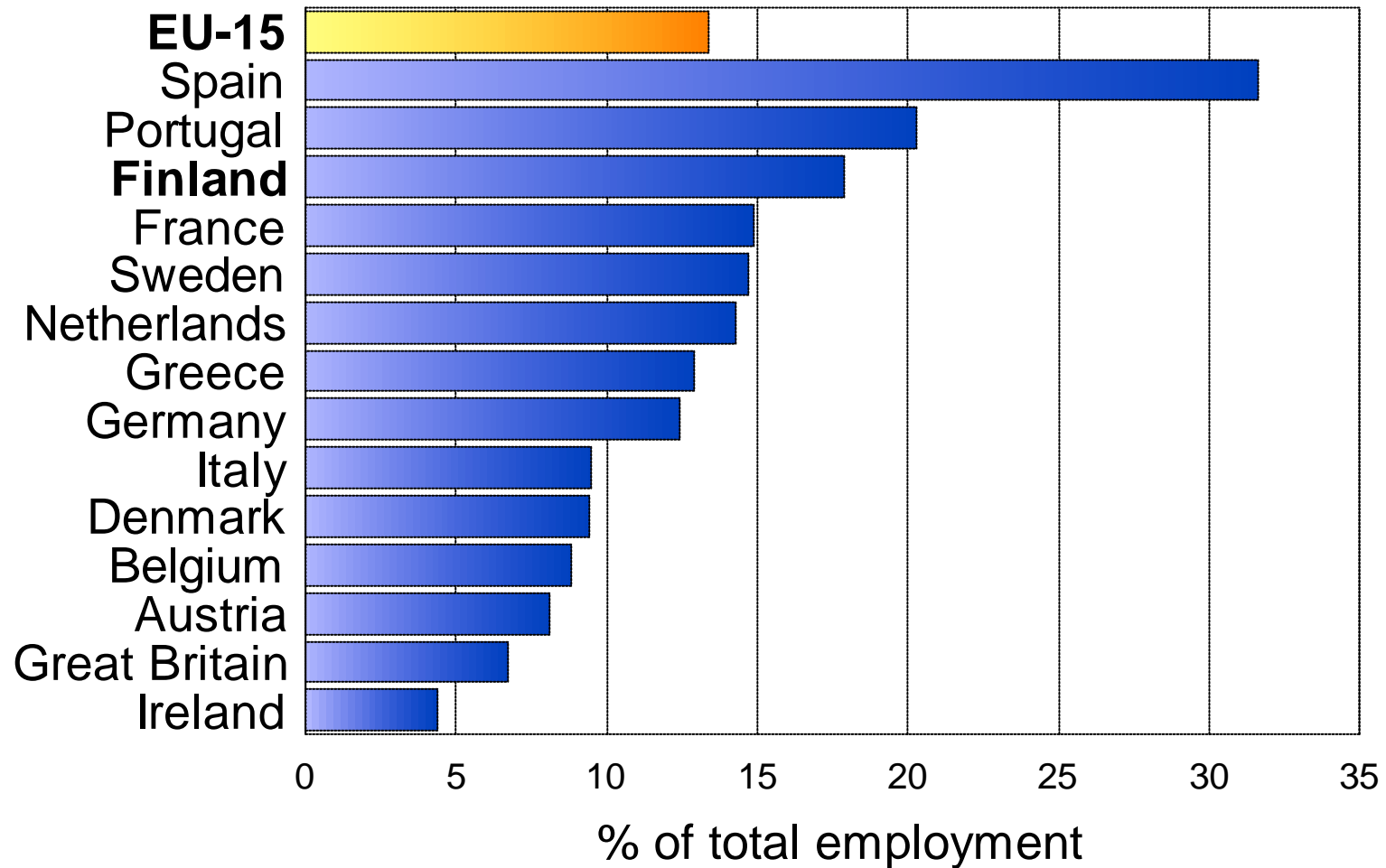
Employees working full time



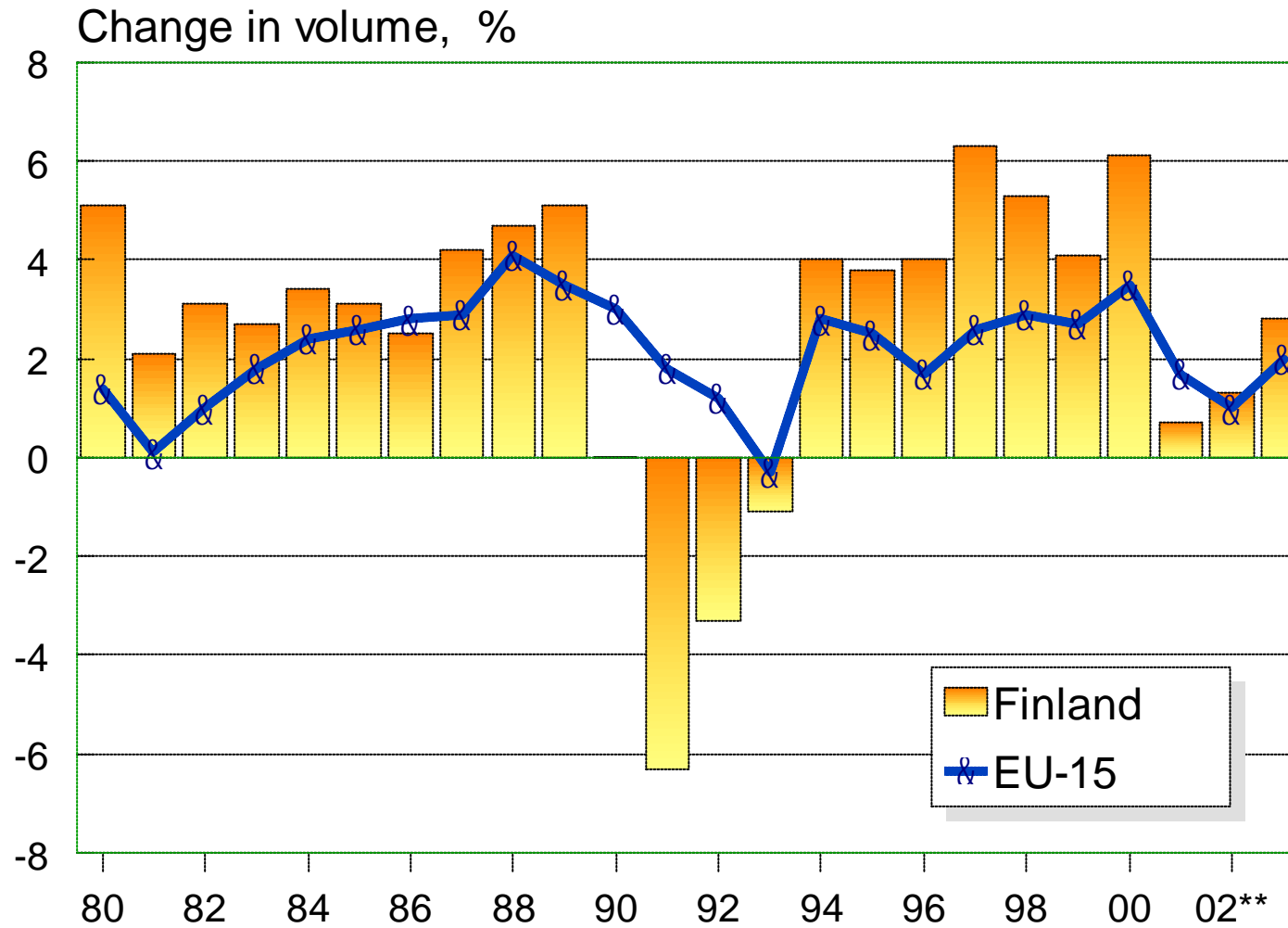
PART-TIME EMPLOYMENT IN EU-COUNTRIES 2001



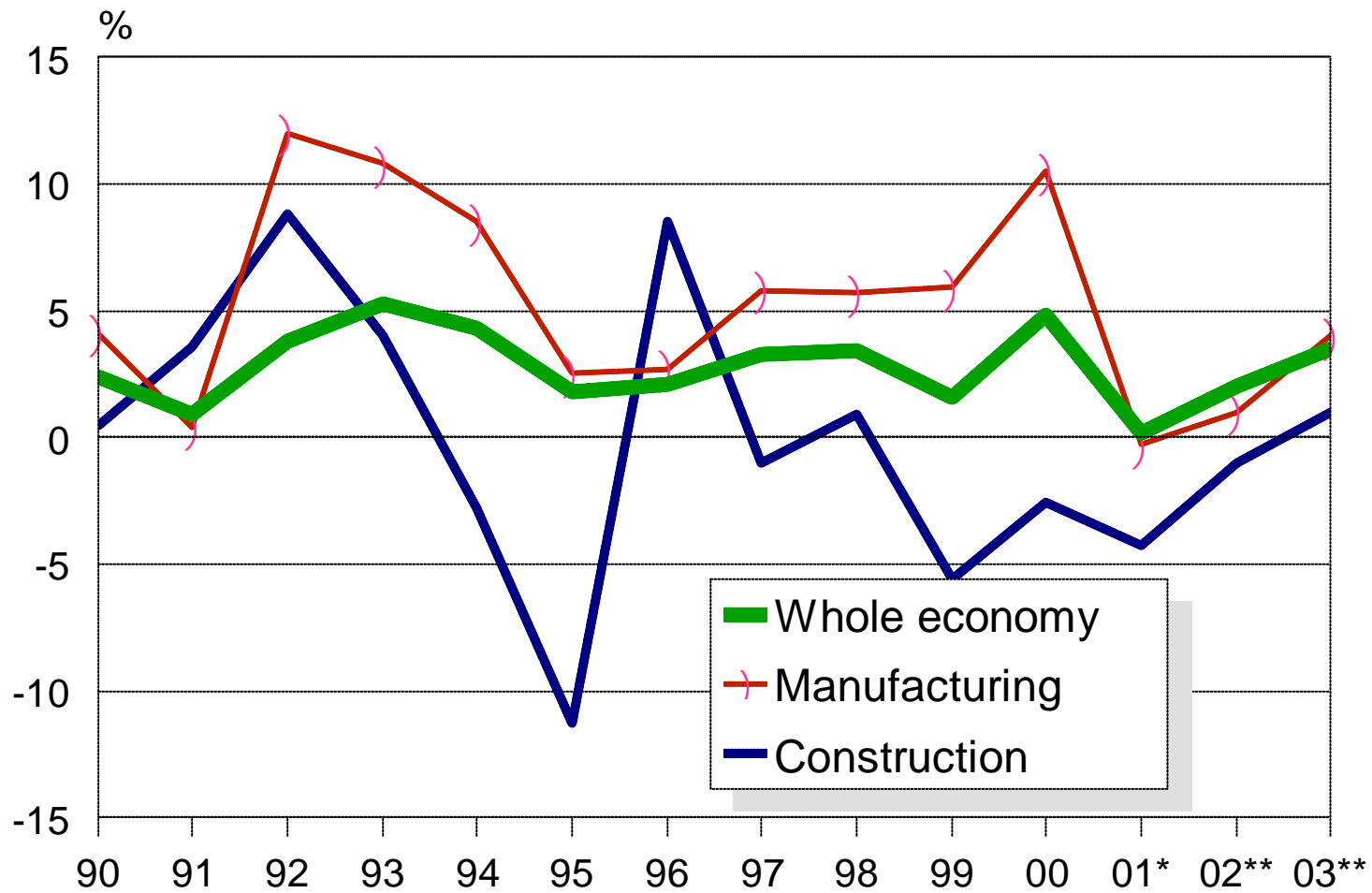
FIXED TERM CONTRACTS IN EU-COUNTRIES 2001



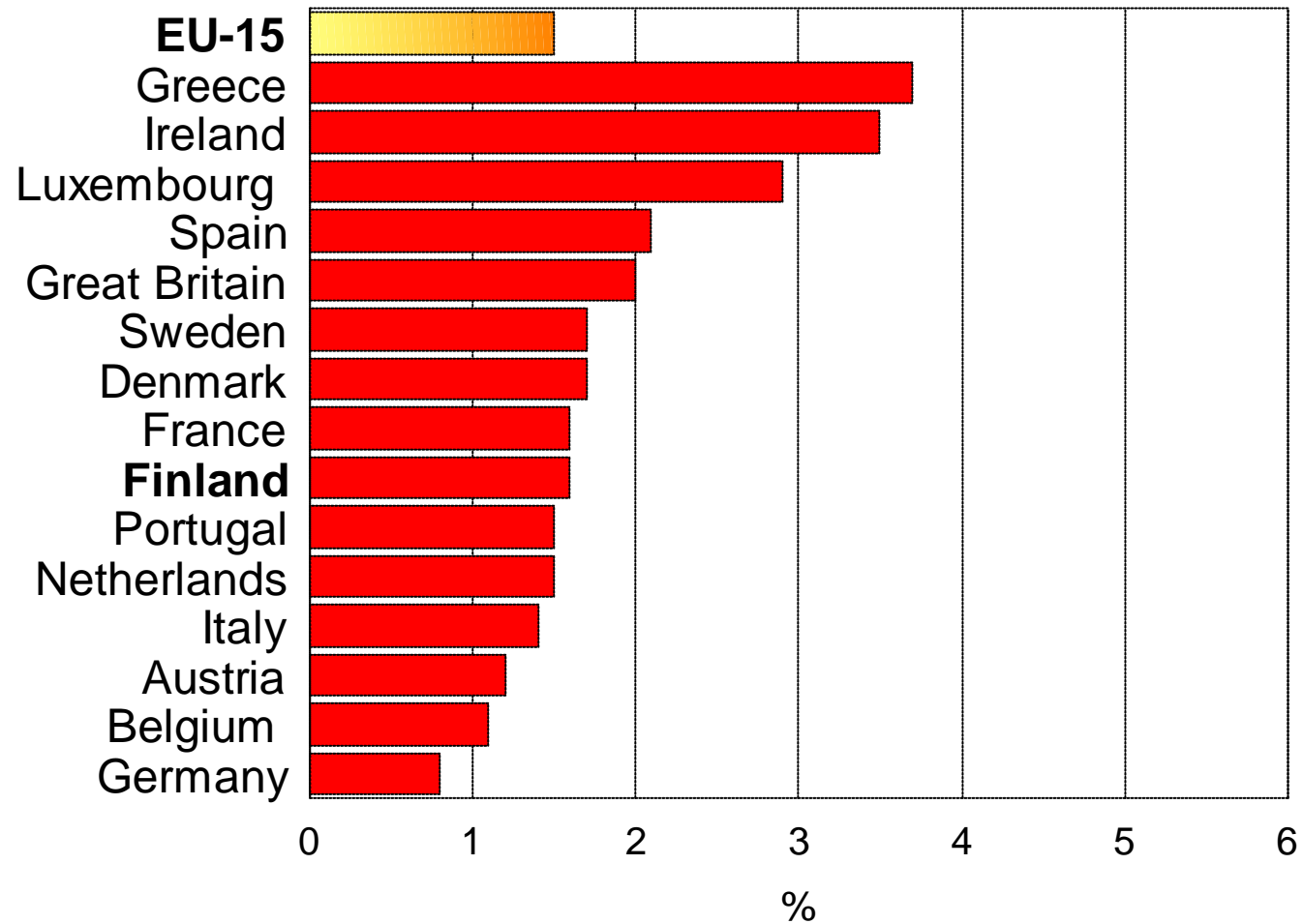
GROSS DOMESTIC PRODUCT 1980 - 2003



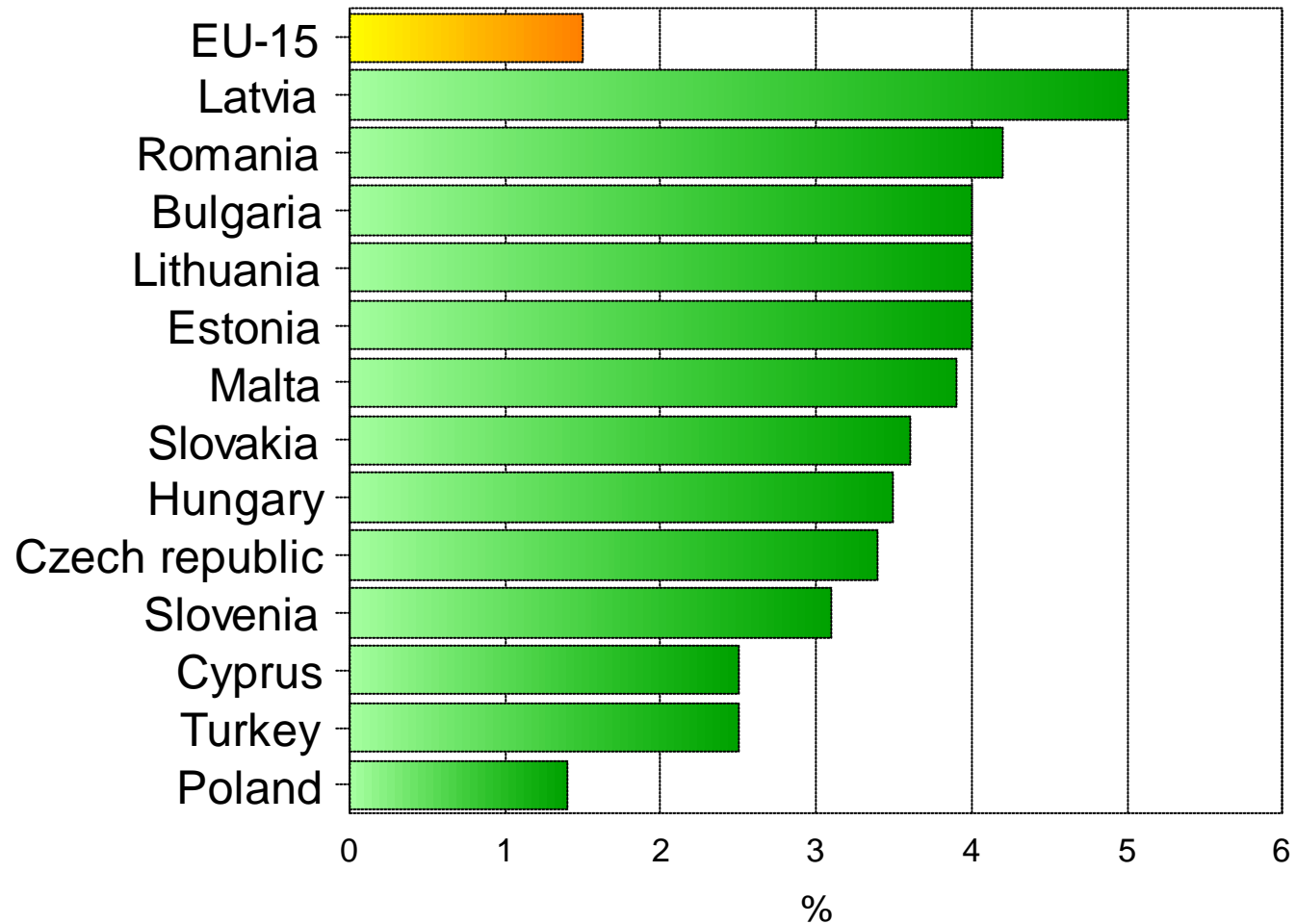
LABOUR PRODUCTIVITY 1990 - 2003



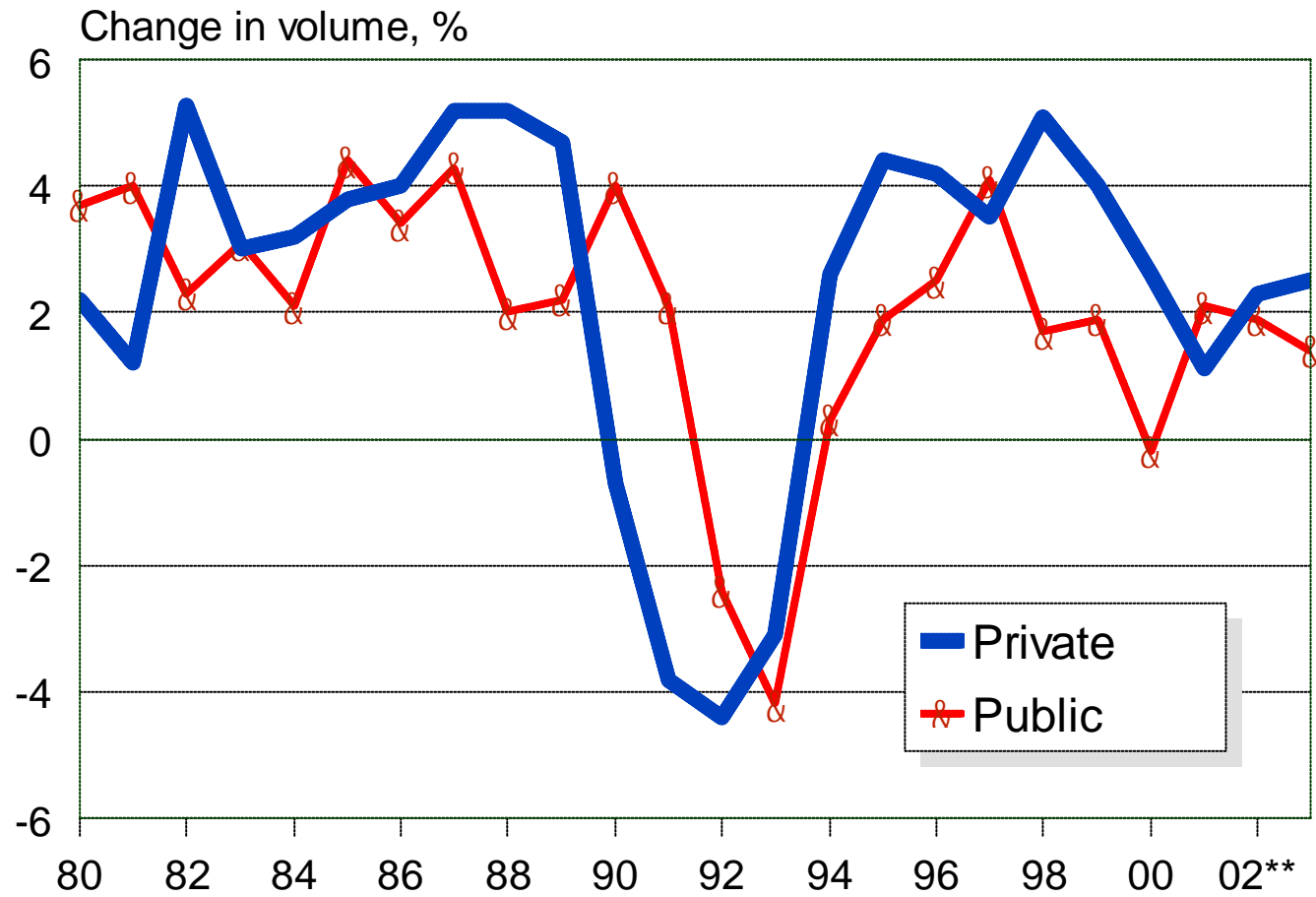
GROSS DOMESTIC PRODUCT IN EU-COUNTRIES 2002**



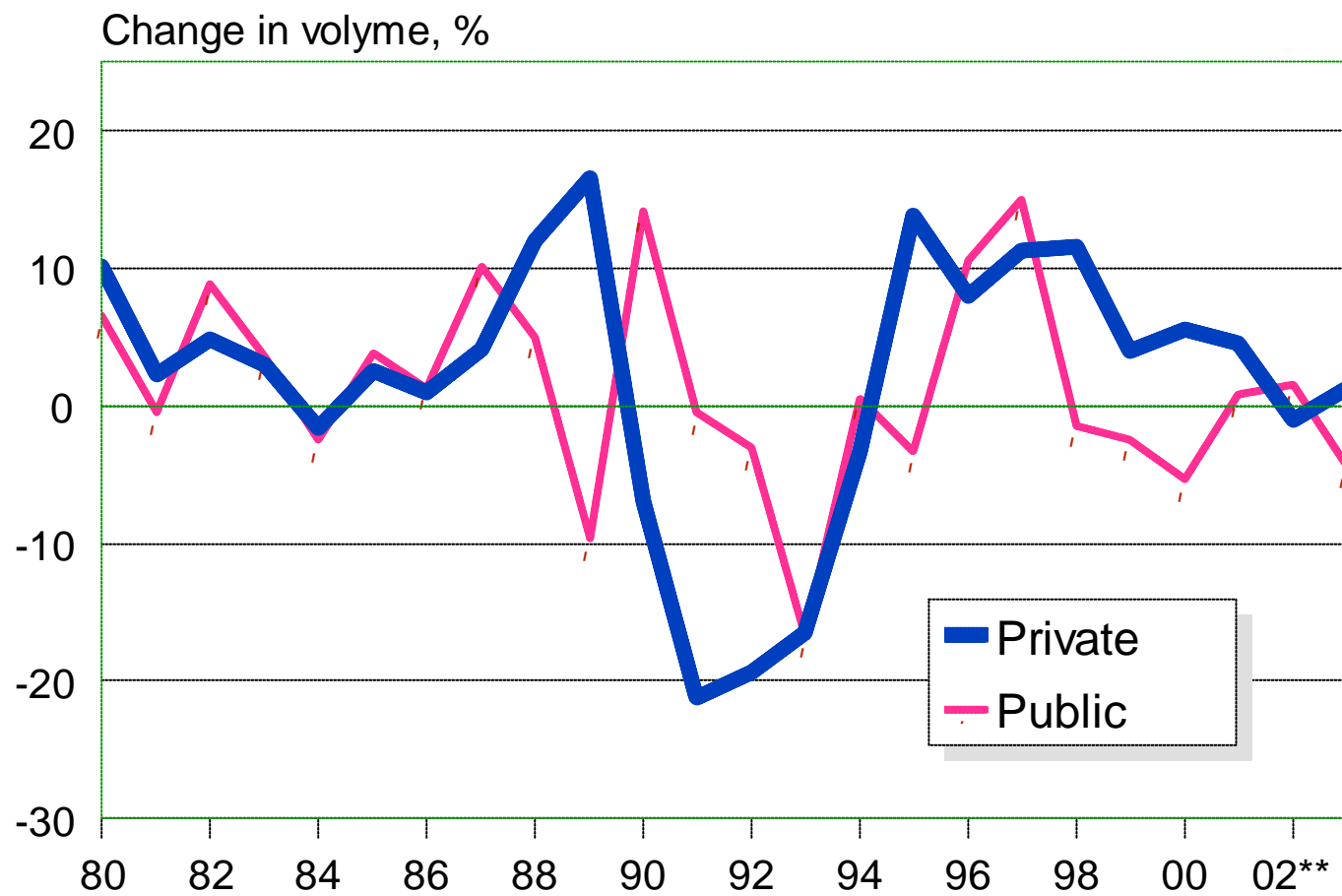
GROSS DOMESTIC PRODUCT IN EU-CANDIDATE COUNTRIES 2002**



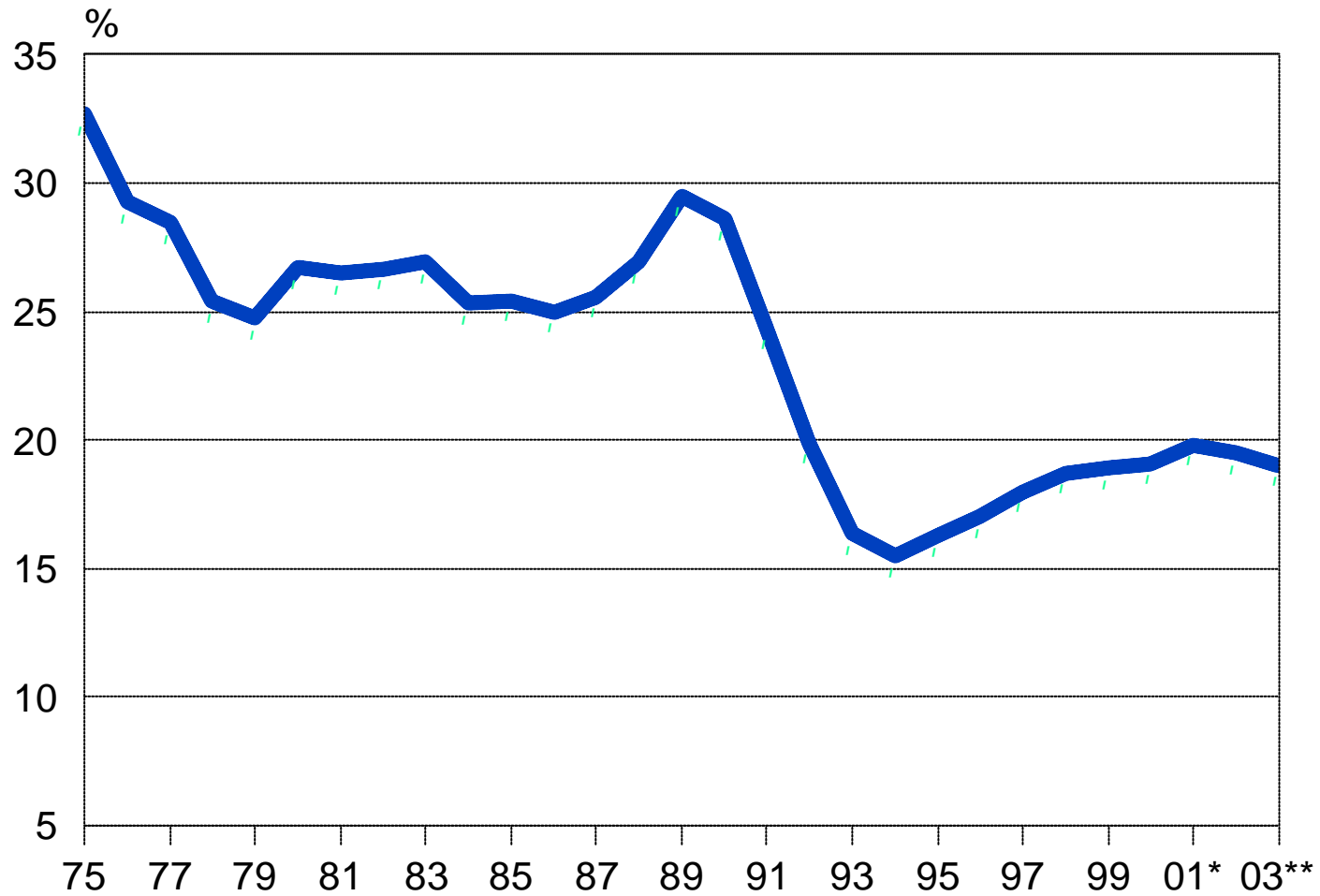
CONSUMPTION 1980 - 2003



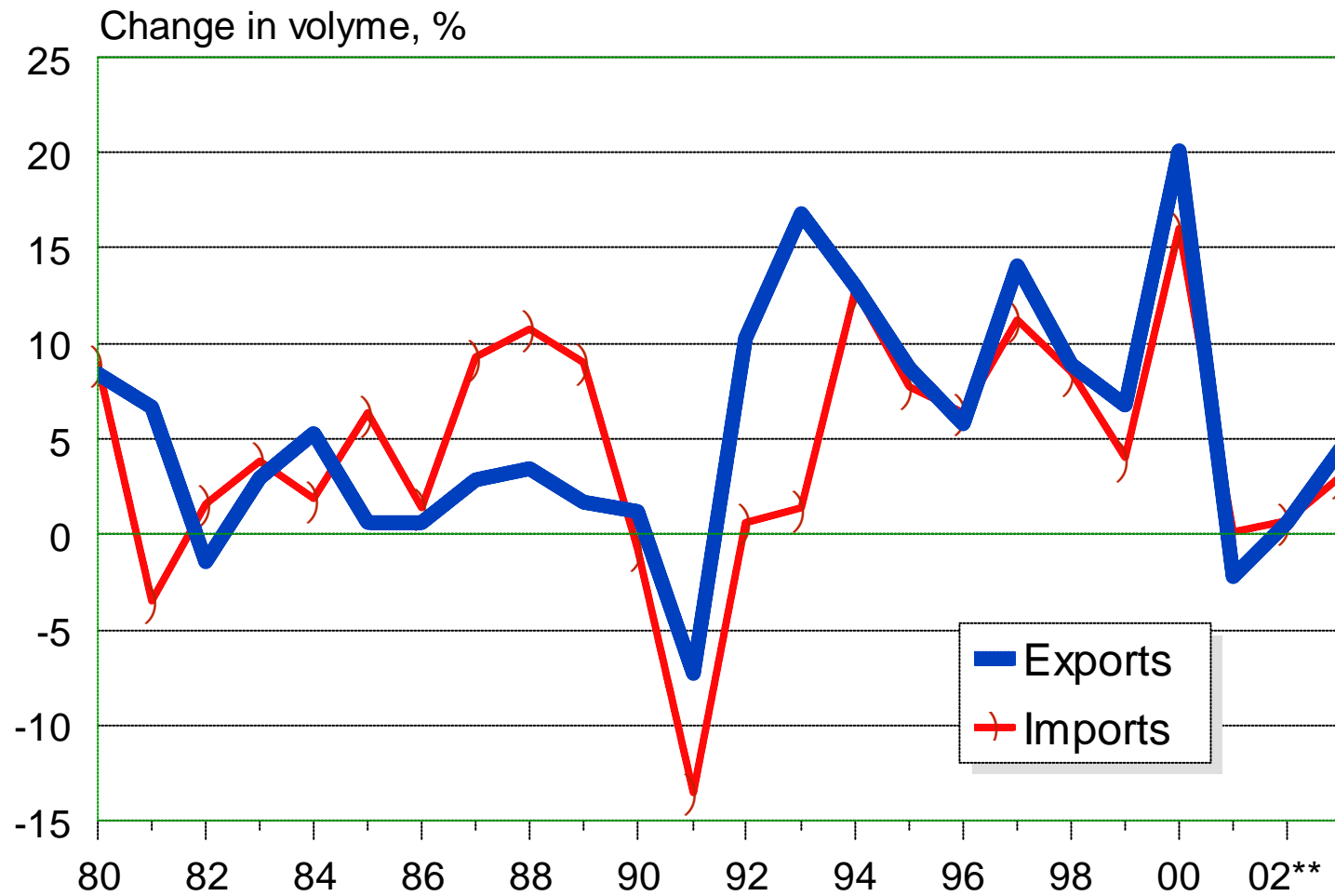
INVESTMENTS 1980 - 2003



RATIO OF INVESTMENTS TO GDP 1975 - 2003

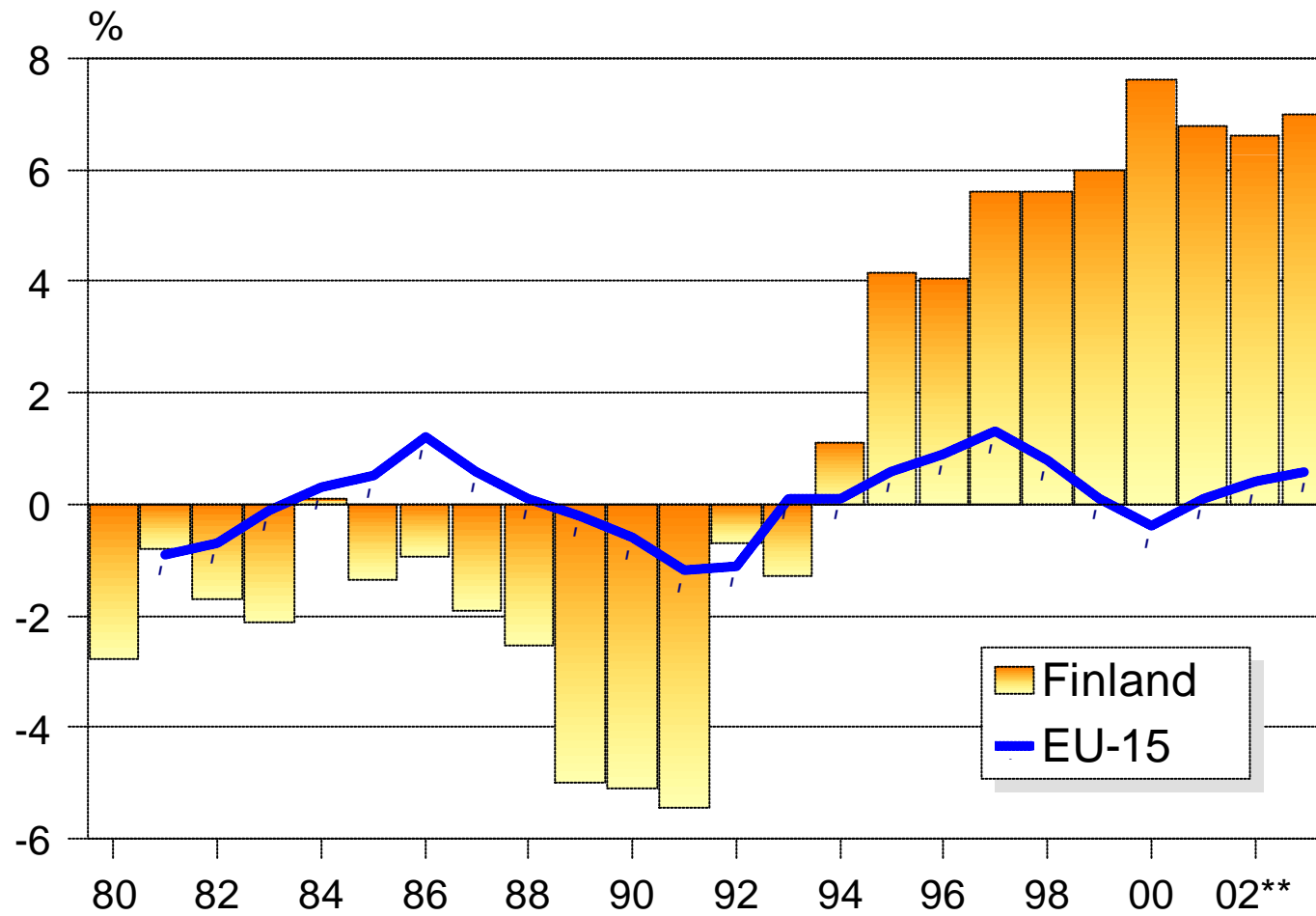


IMPORTS AND EXPORTS OF GOODS AND SERVICES, 1980 - 2003

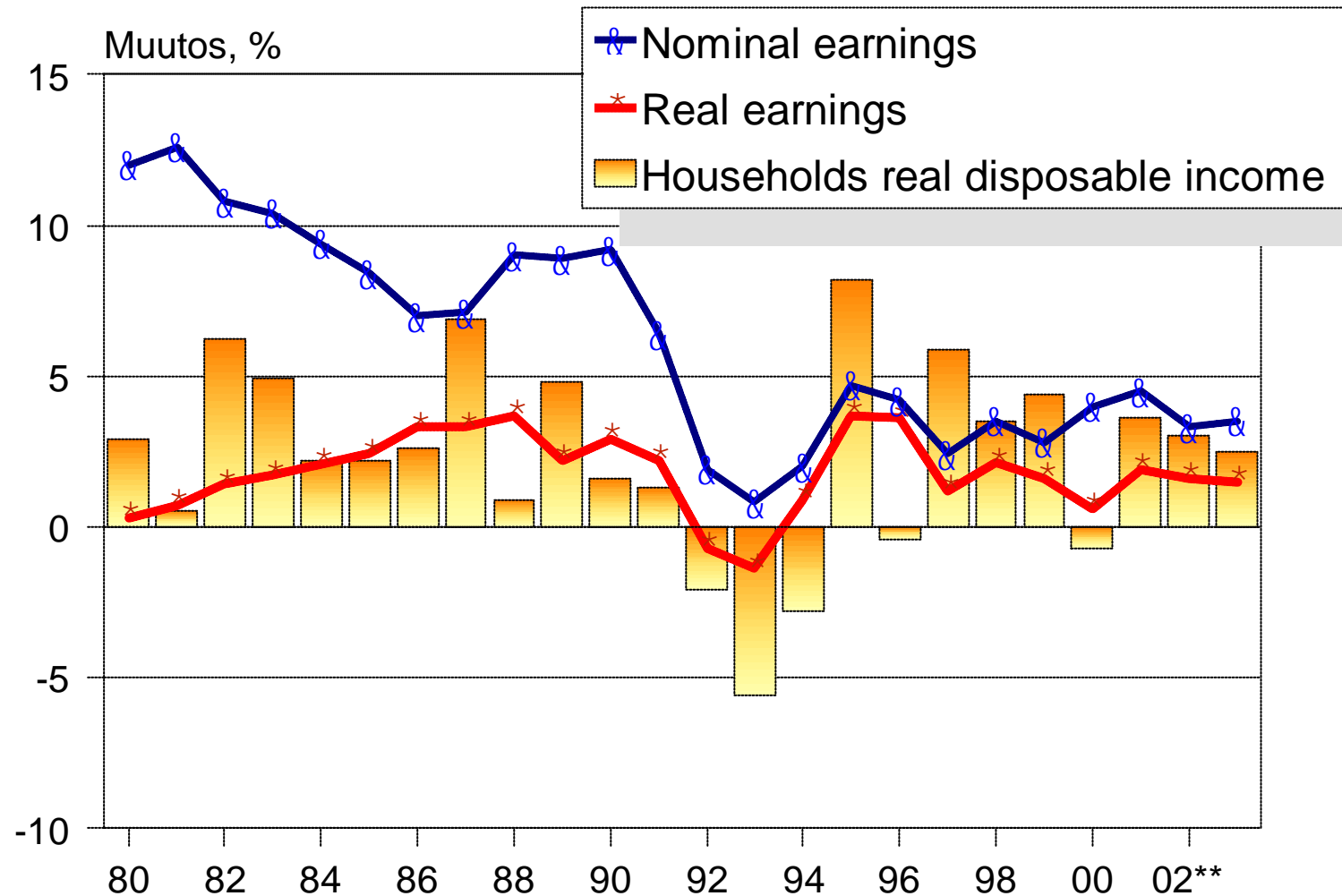


CURRENT ACCOUNT 1980 - 2003

Relative to GDP



EMPLOYEES' NOMINAL AND REAL EARNINGS AND HOUSEHOLDS' REAL DISPOSABLE INCOME 1980 - 2003

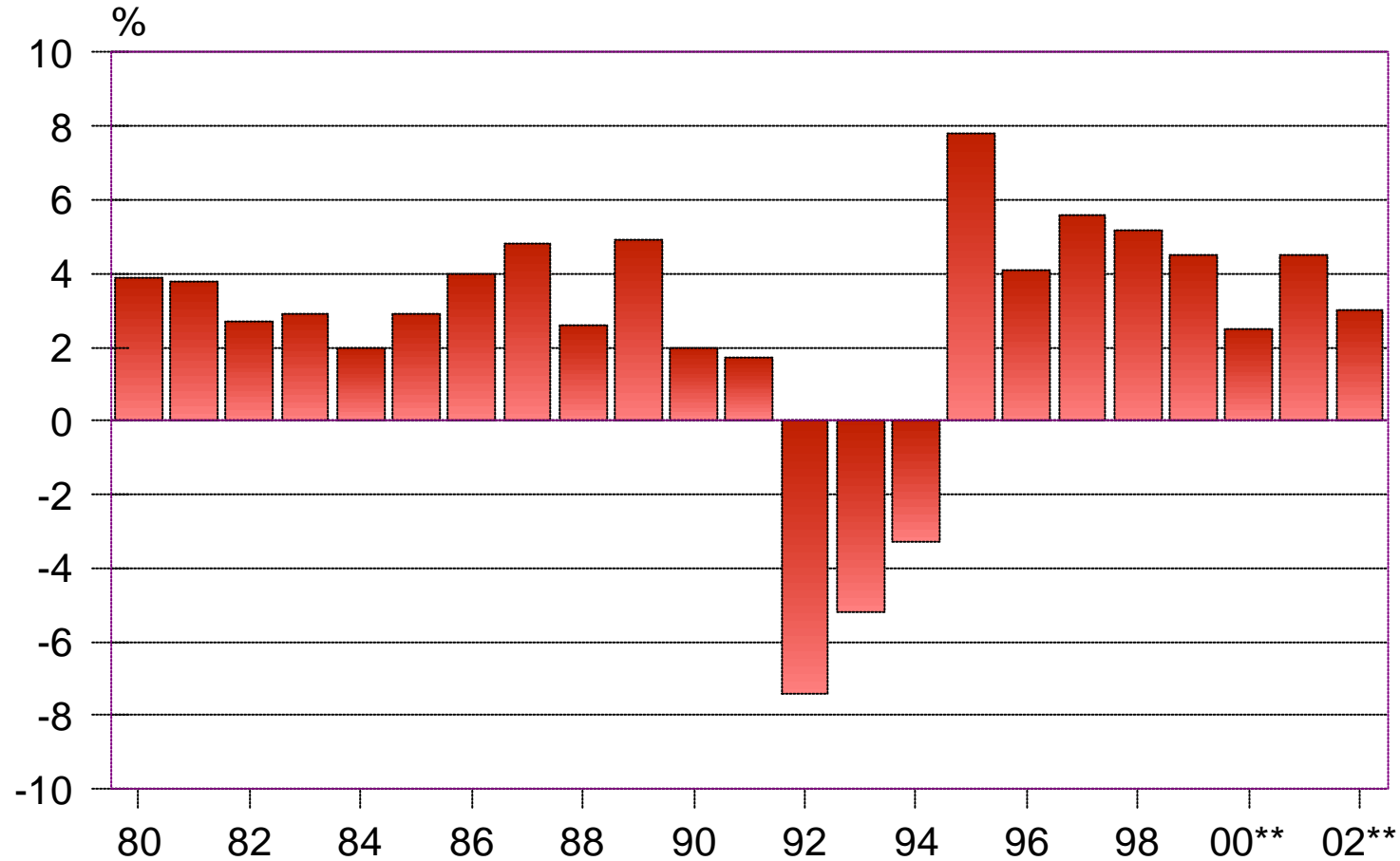


LABOUR INCOME AS A PERCENTAGE OF NATIONAL INCOME 1980 - 2003



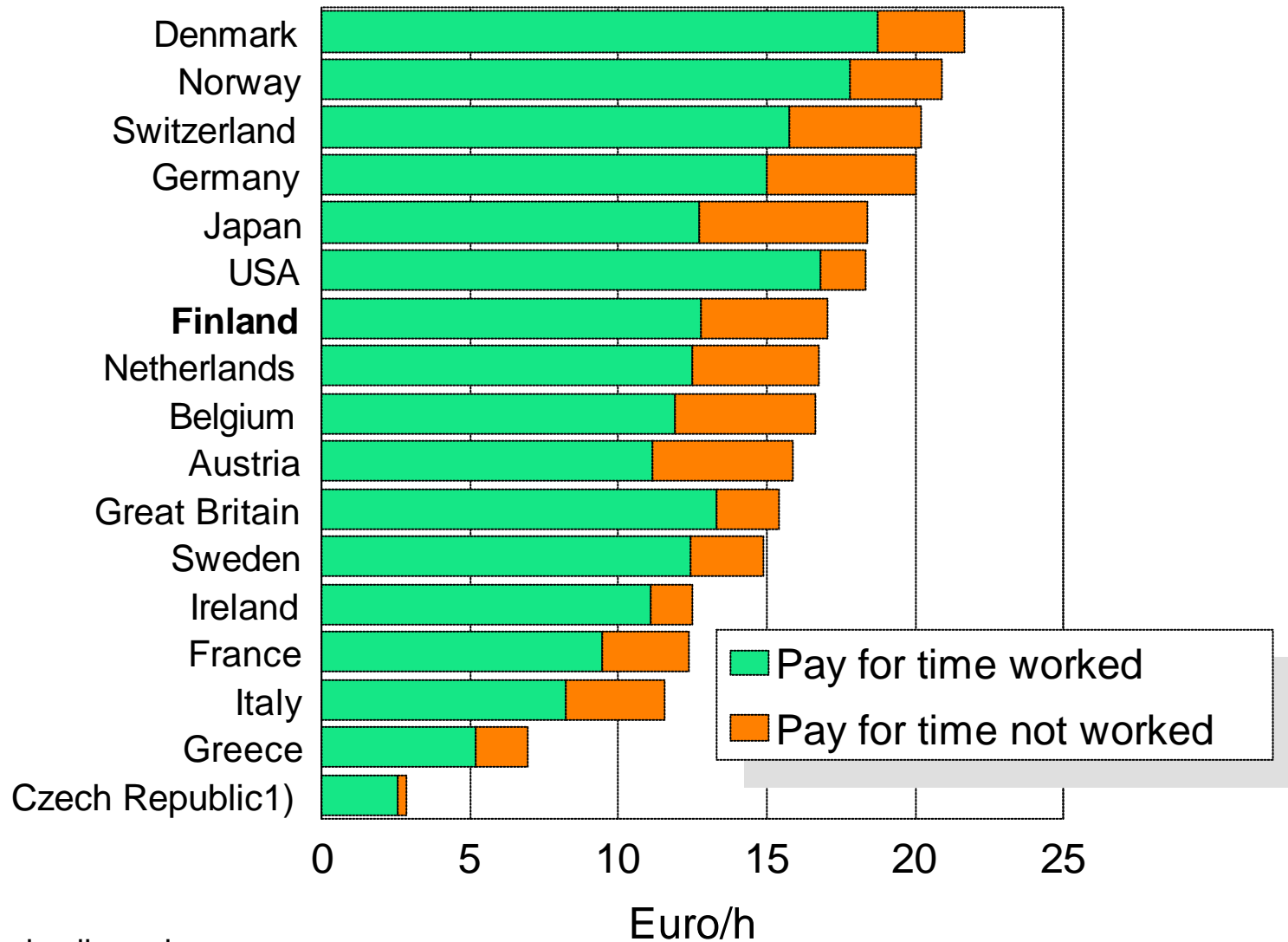
EMPLOYEES' REAL DISPOSABLE INCOME 1980 - 2002

Change from previous year



WAGES IN MANUFACTURING 2001

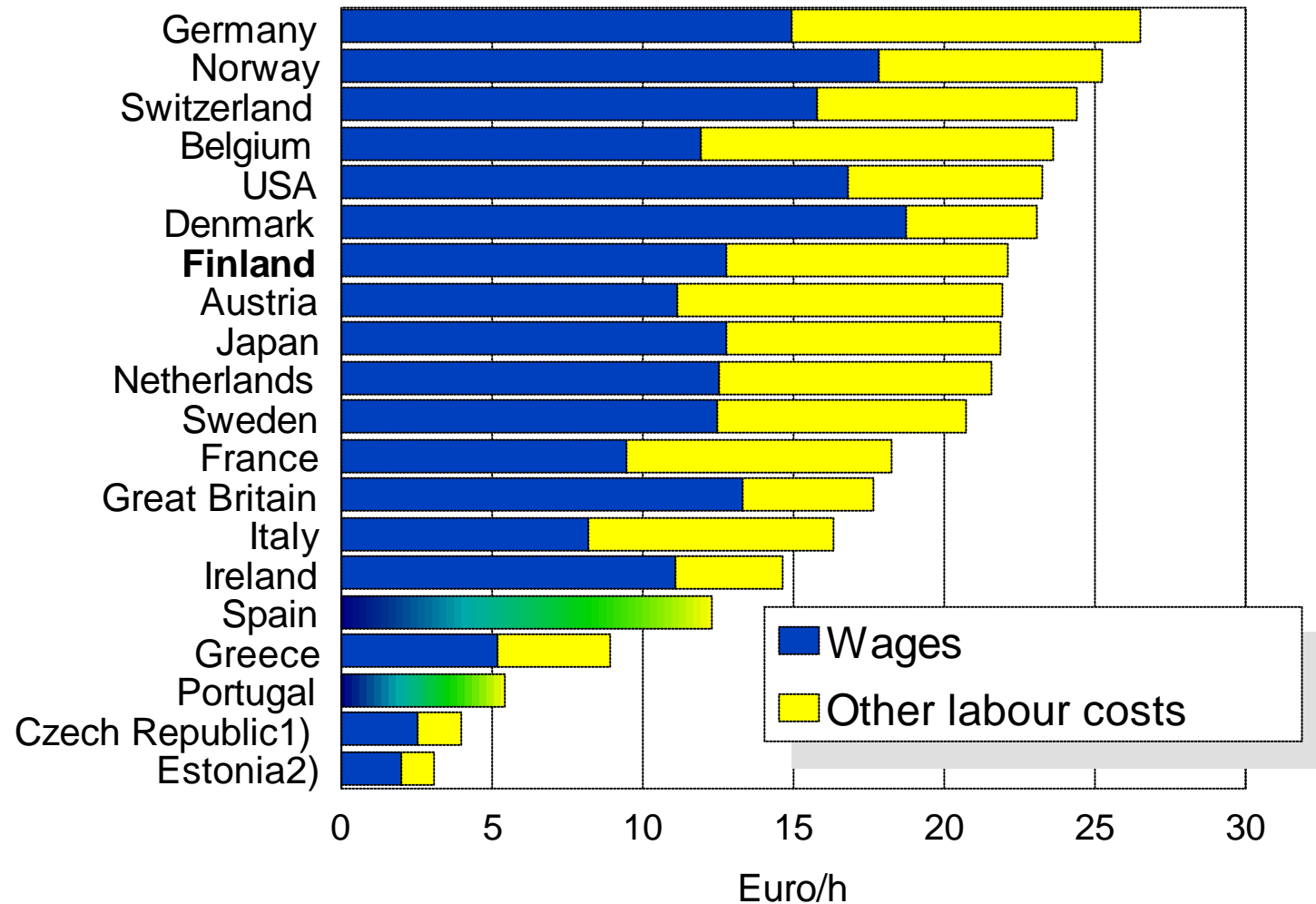
Production workers



1) Include all employees

LABOUR COSTS IN MANUFACTURING 2001

Production workers

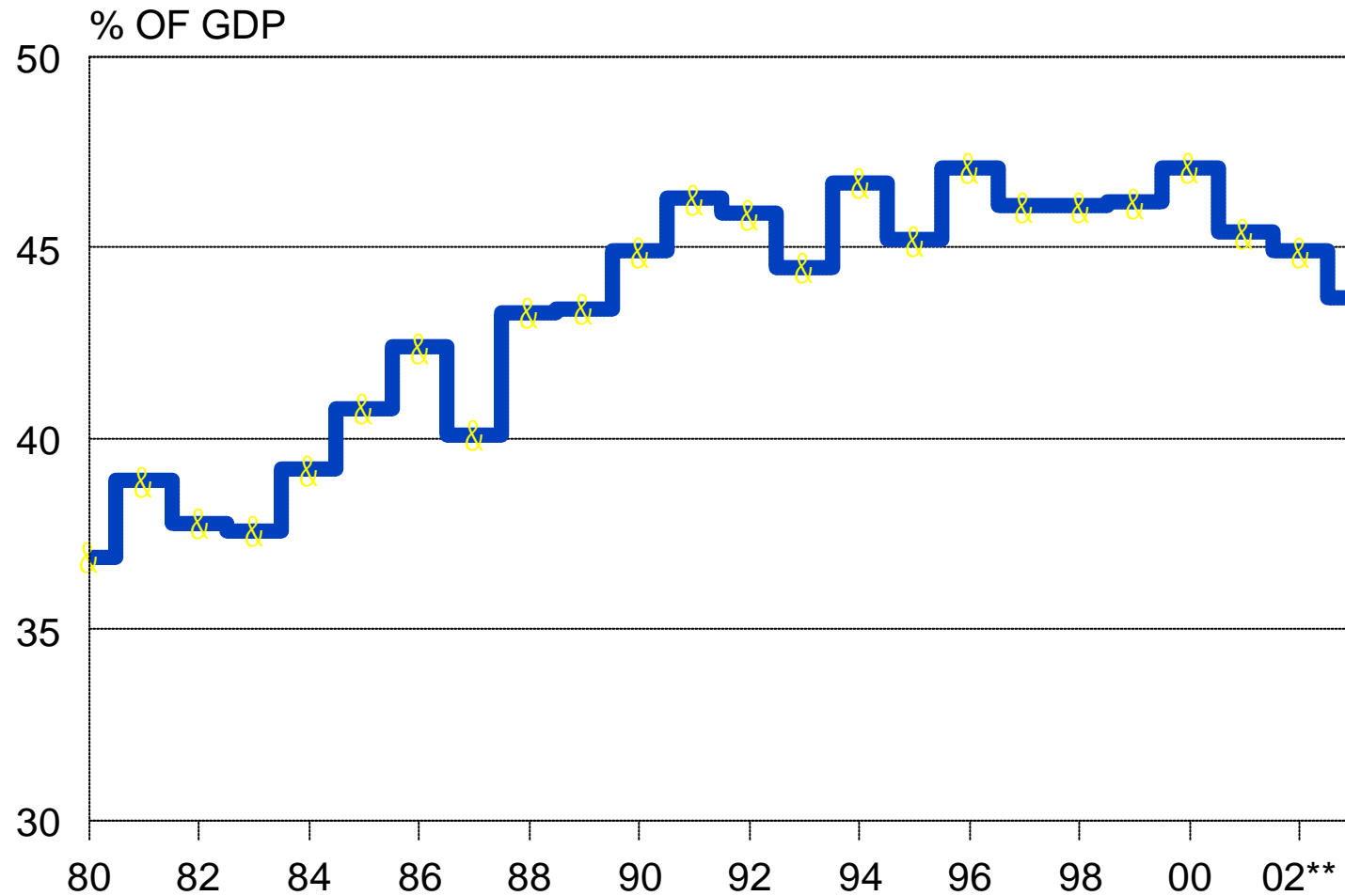


1) Include all employees

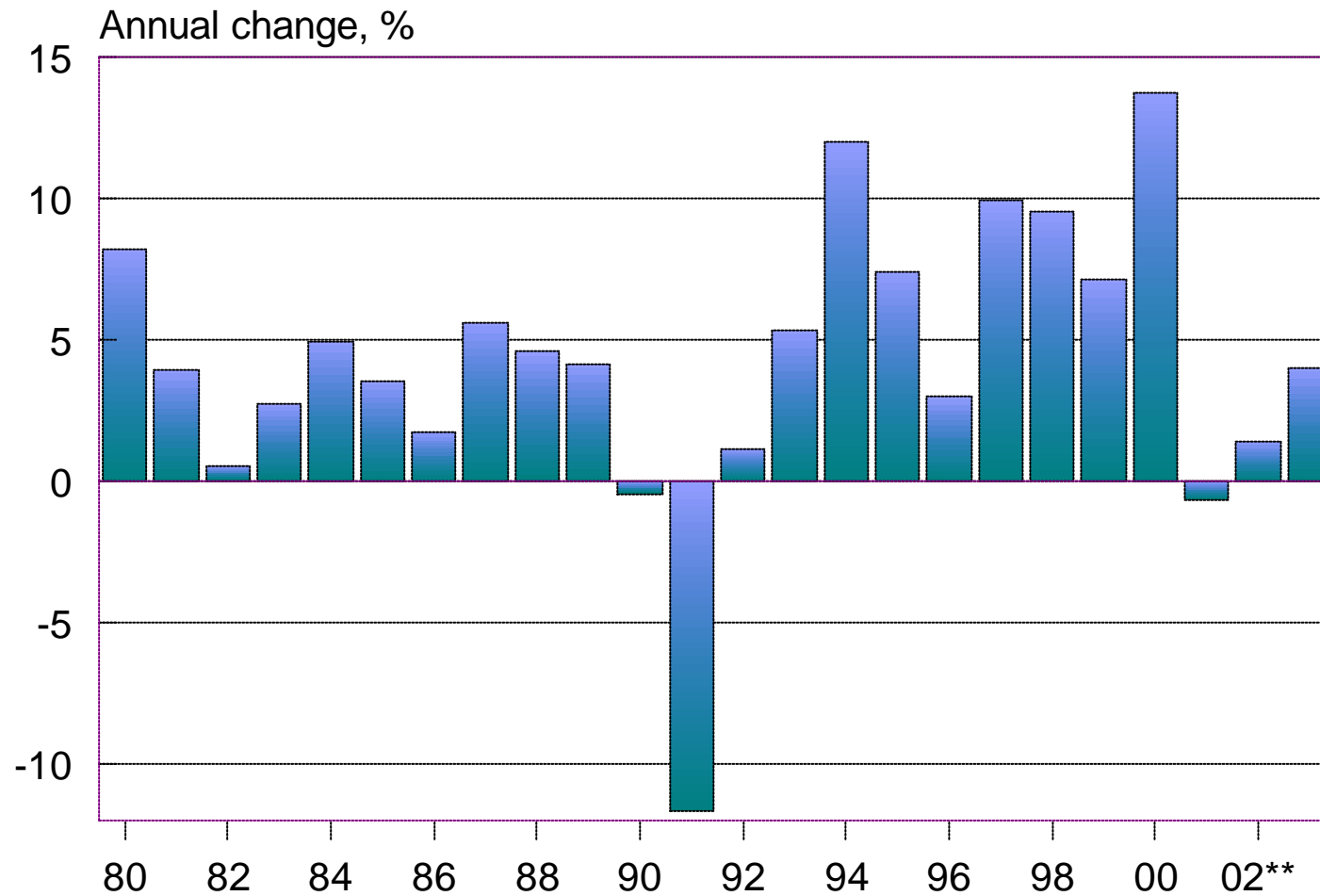
12.6.2002/**SAK**/TL

Source: SAF, U.S. Department of Labor (BLS), Bank of Finland

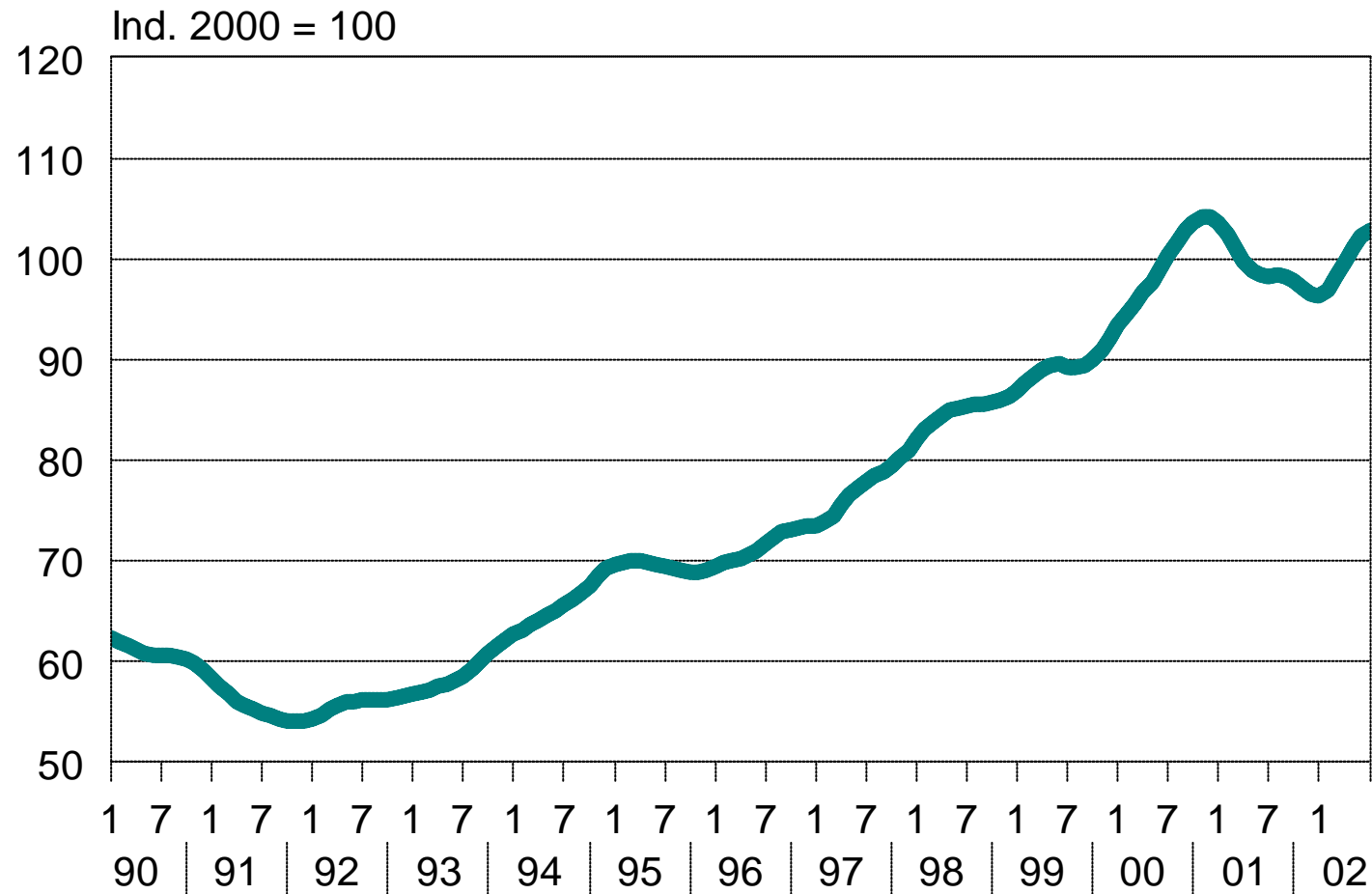
TAX RATE 1980- 2003



MANUFACTURING PRODUCTION 1980 - 2003

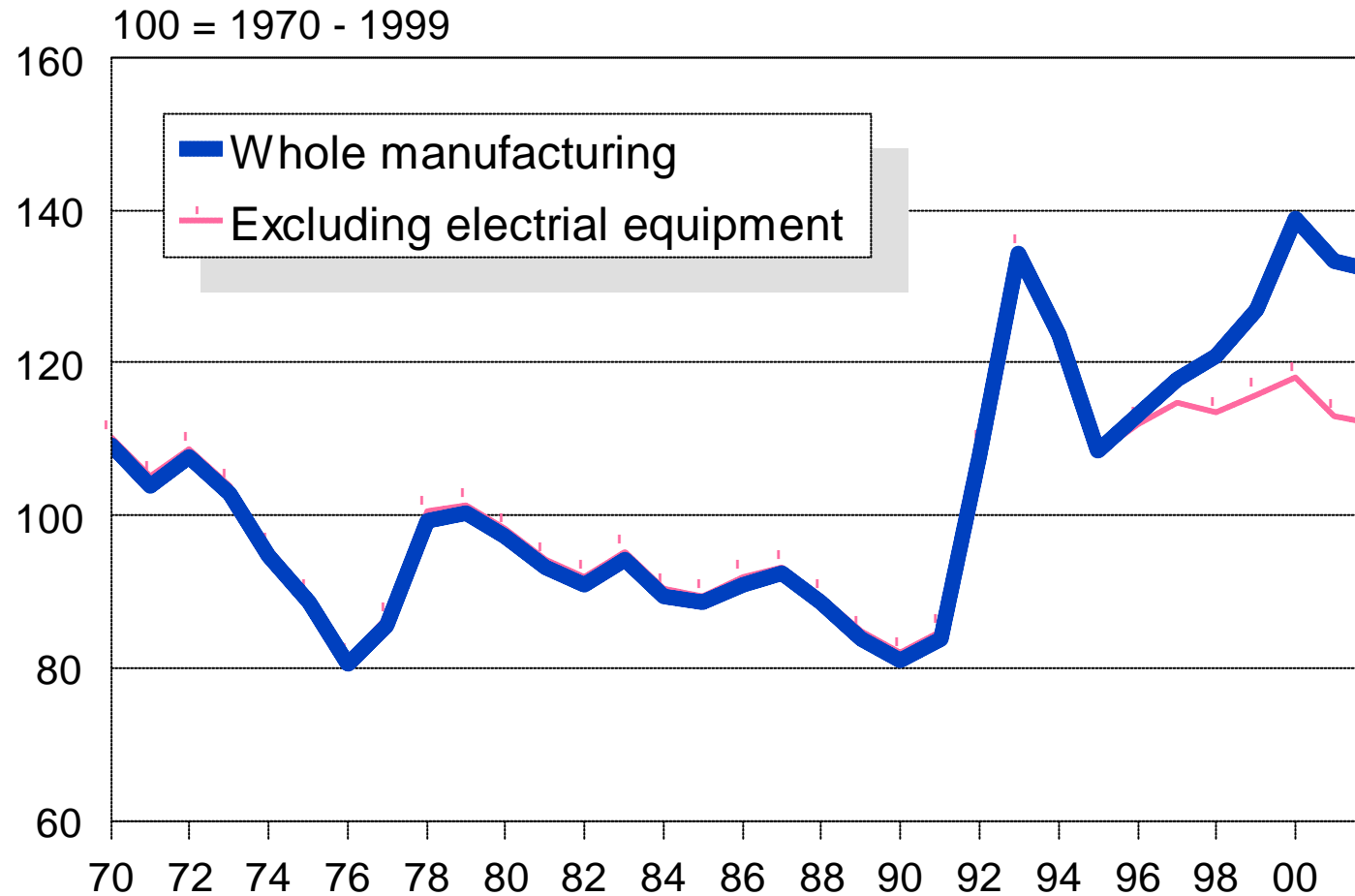


MANUFACTURING PRODUCTION 1990 - 2002:7 (Trend)

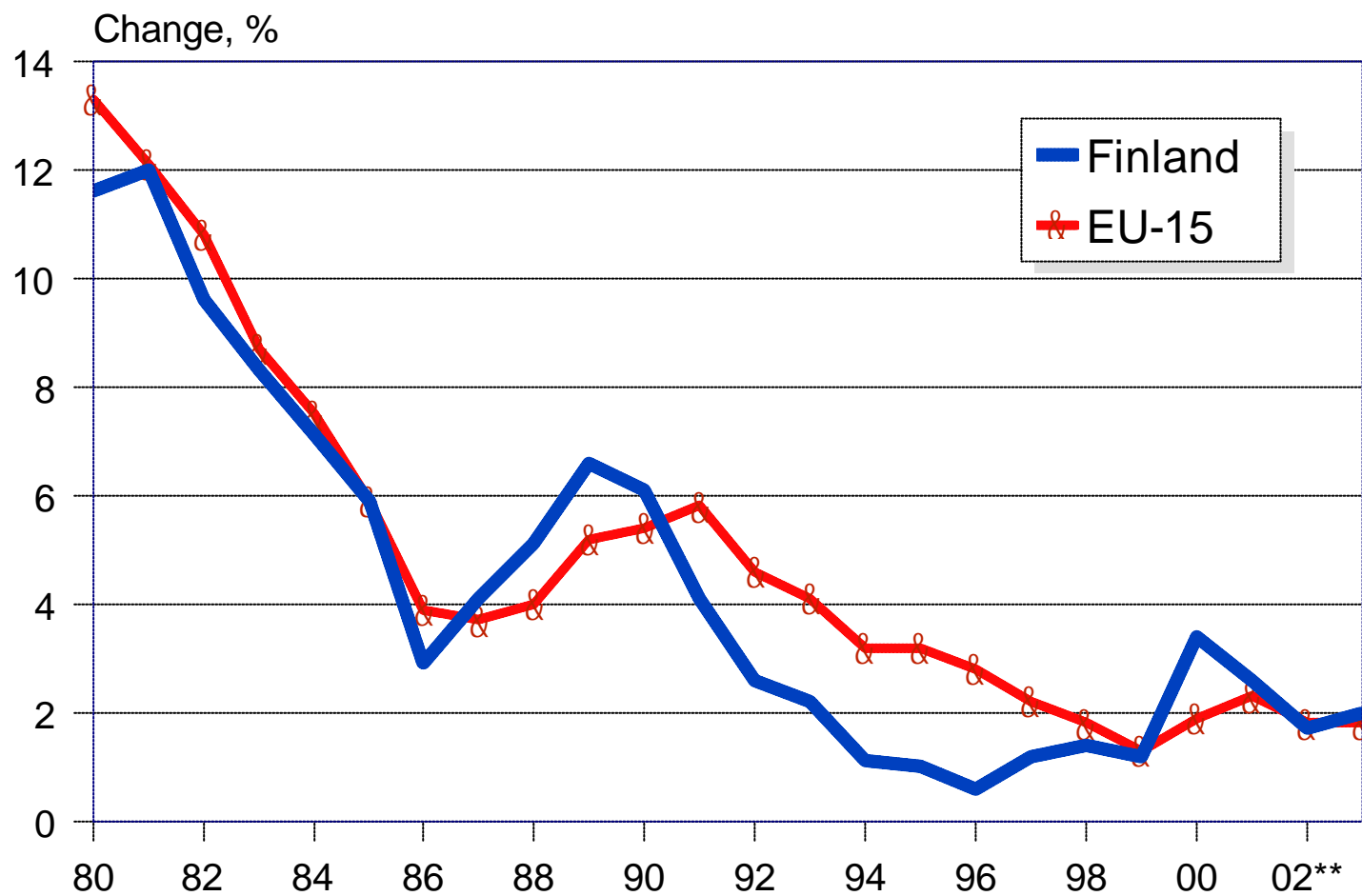


PRICE COMPETITIVENESS OF MANUFACTURING INDUSTRY IN WESTERN MARKETS 1970 - 2002

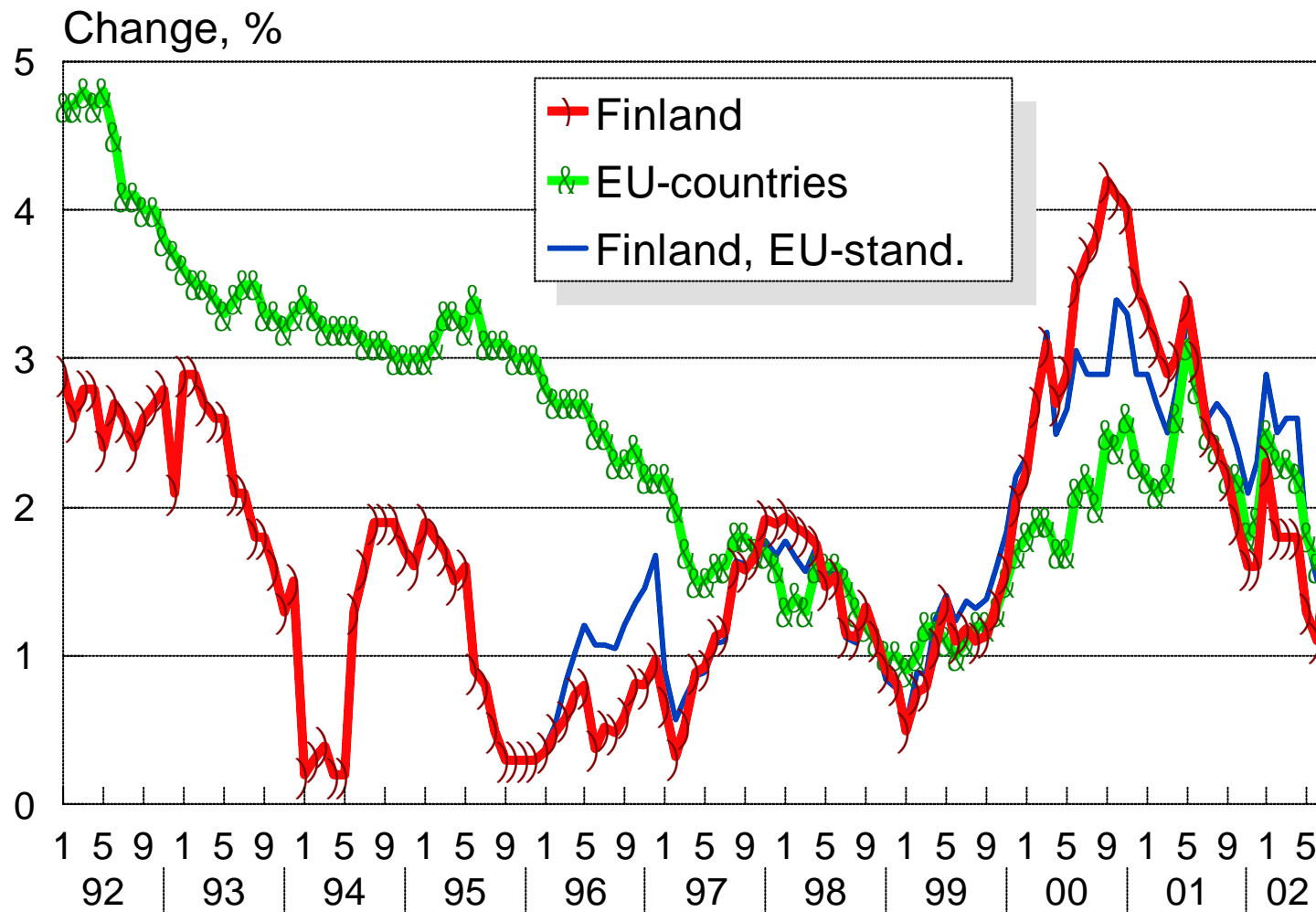
OECD/Finland



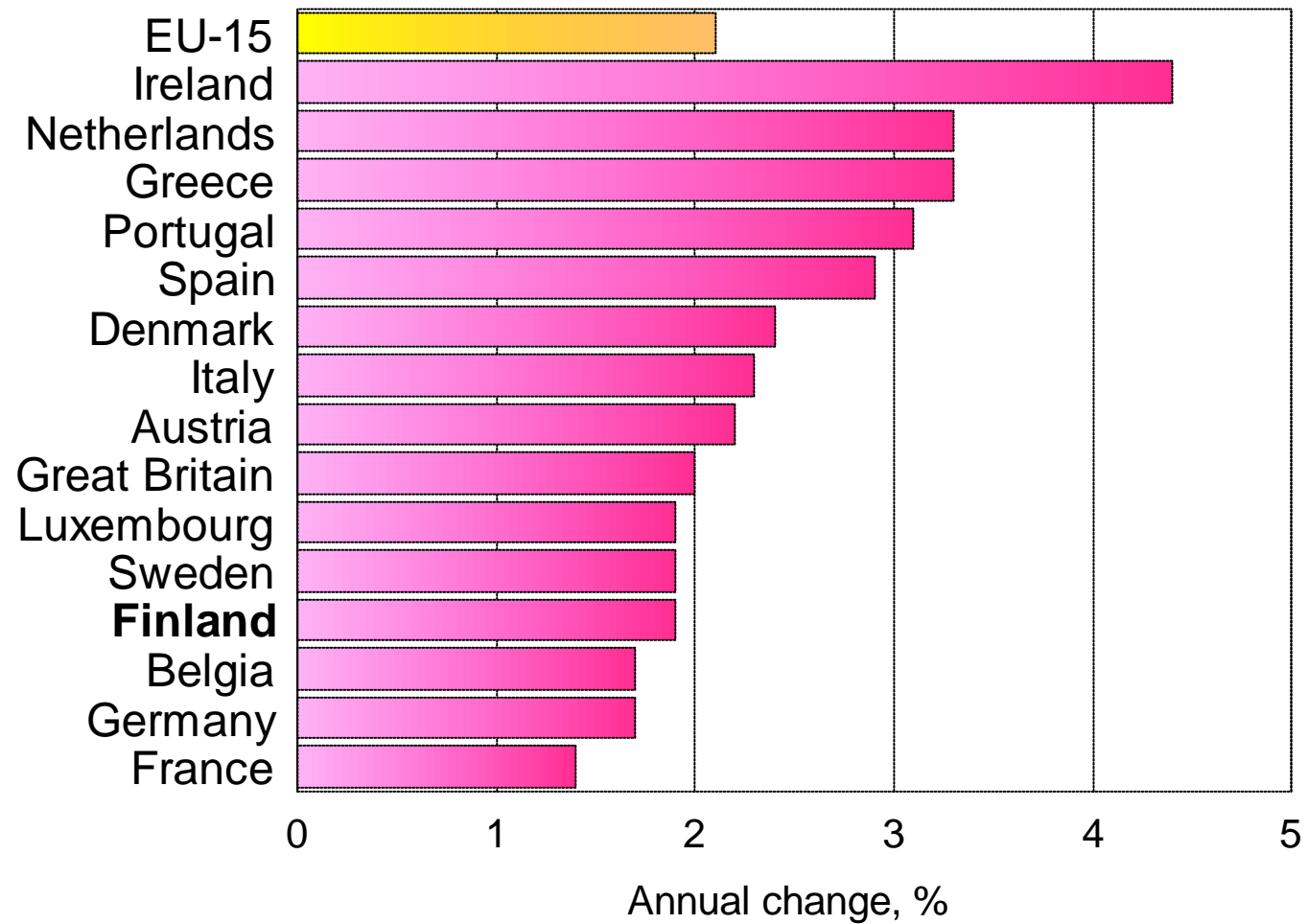
CONSUMER PRICES IN FINLAND AND EU-COUNTRIES 1980 - 2003



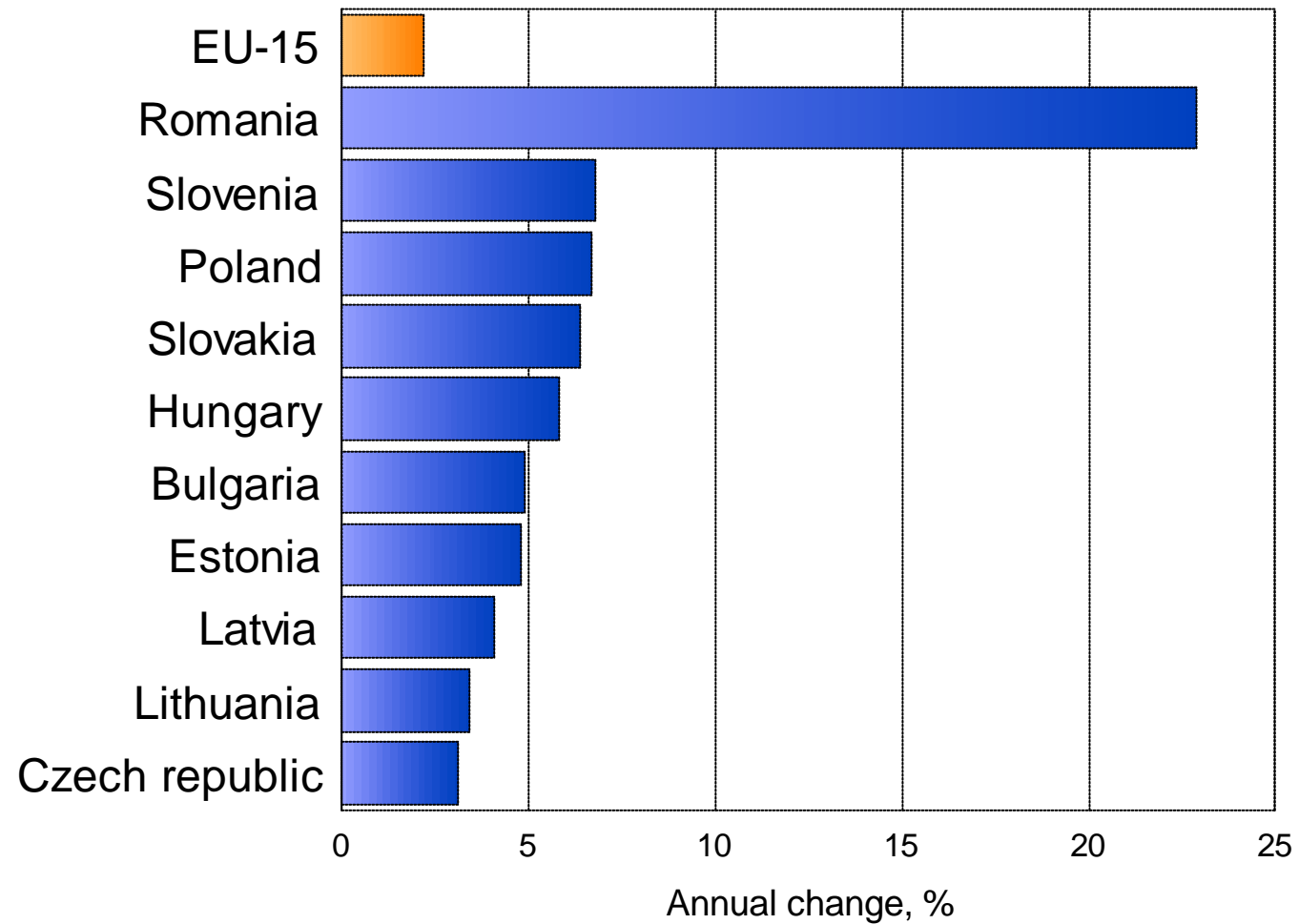
CONSUMER PRICES IN FINLAND AND EU-COUNTRIES 1992 - 2002:7



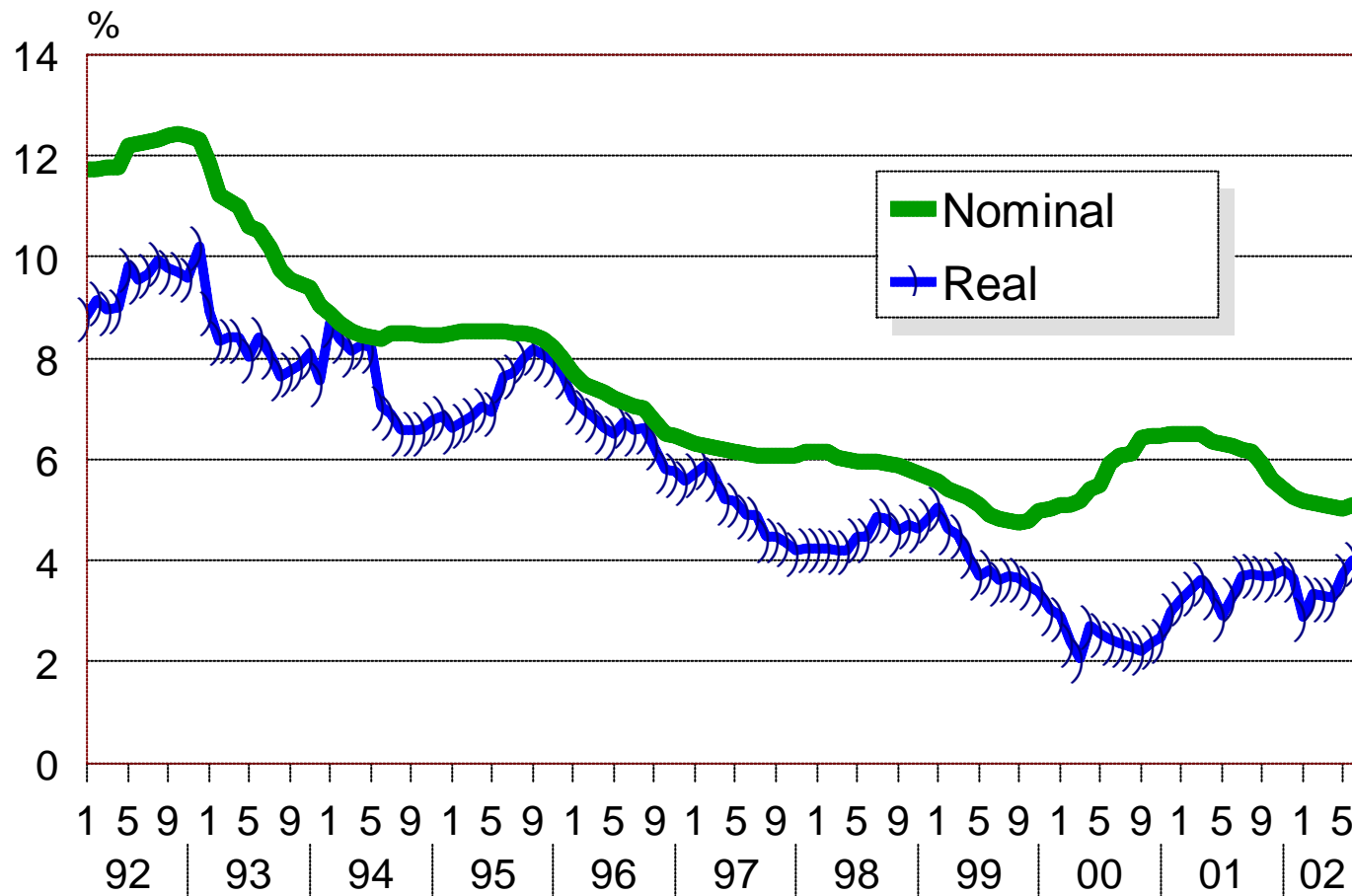
CONSUMER PRICES IN EU-COUNTRIES 2002



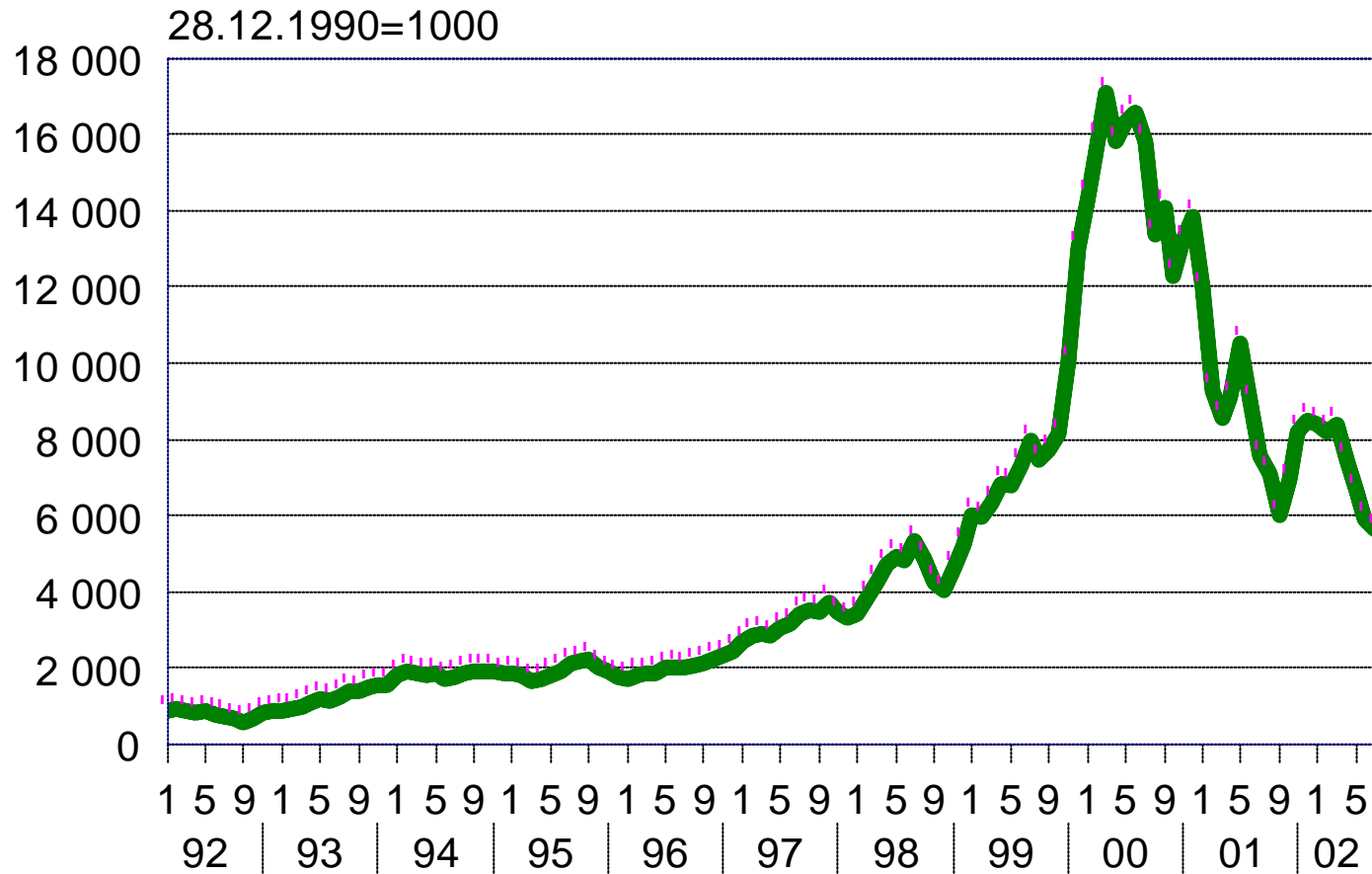
CONSUMER PRICES IN EU-CANDIDATE COUNTRIES 2001**



REAL AVERAGE LENDING RATE FOR HOUSING LOANS 1992:1 - 2002:6

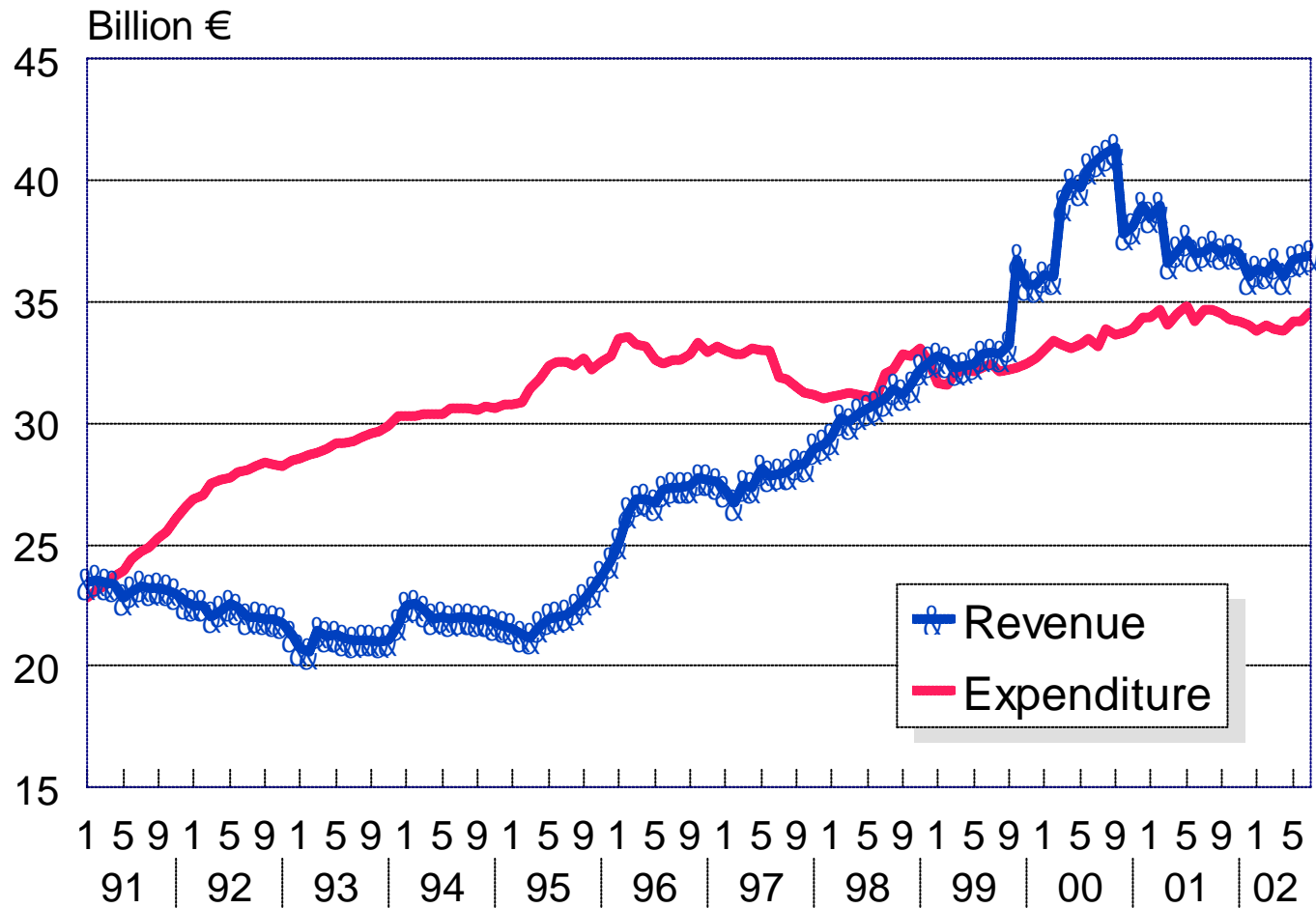


HELSINKI STOCK INDEX (HEX) 1992:1 -2002:7

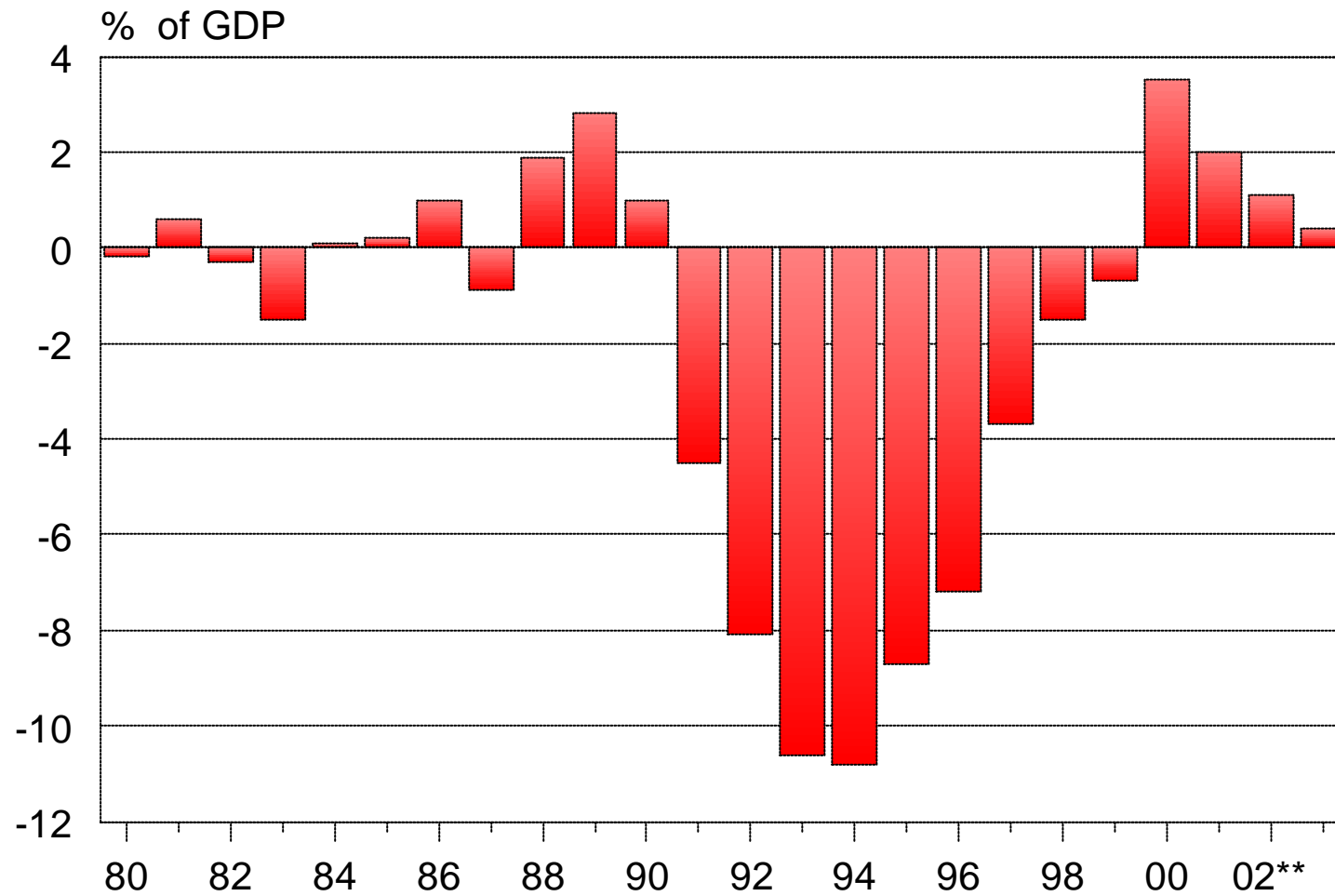


CENTRAL GOVERNMENT REVENUES AND EXPENDITURES 1991 - 2002:7

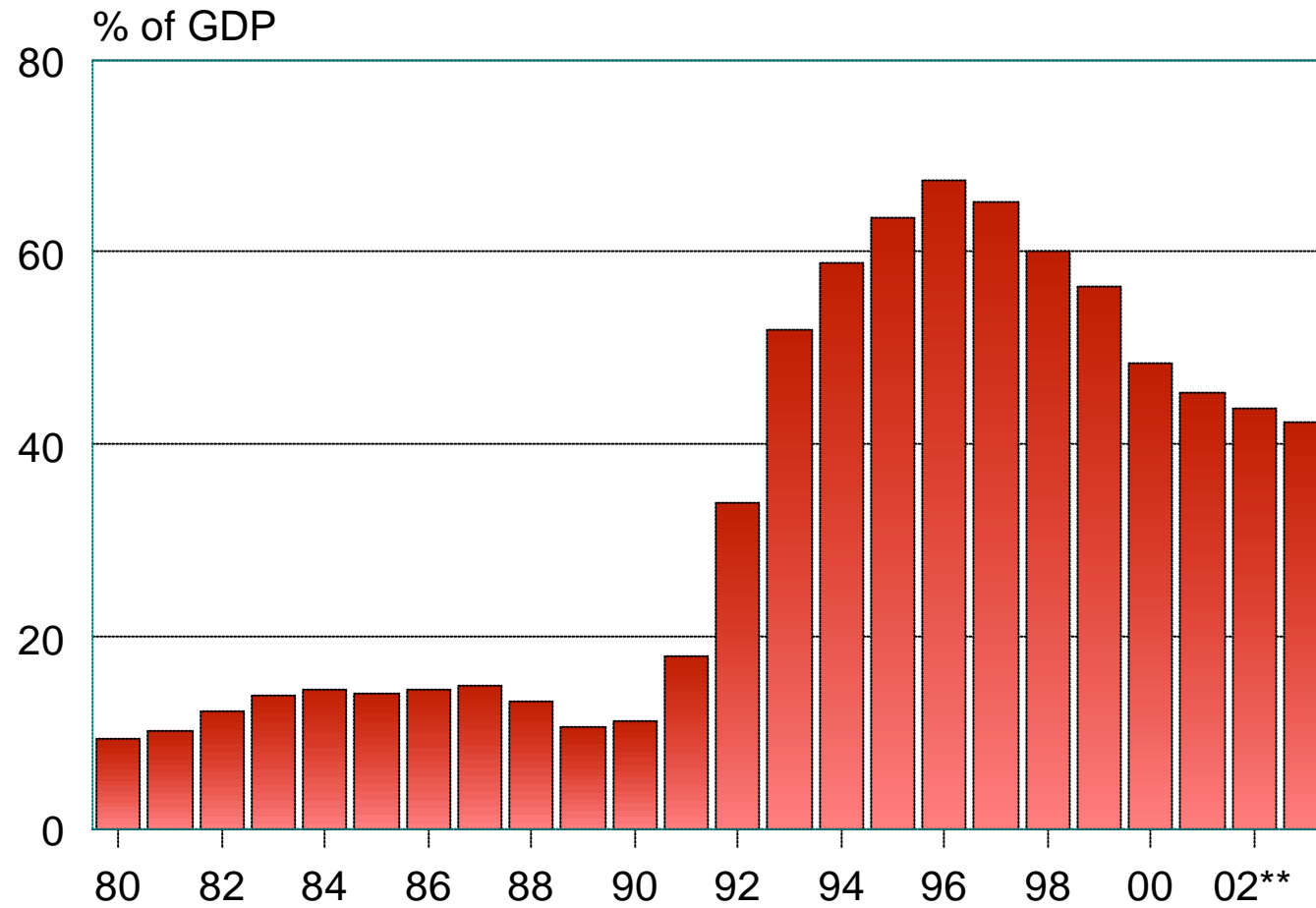
Before financial transactions, 12-month moving sum



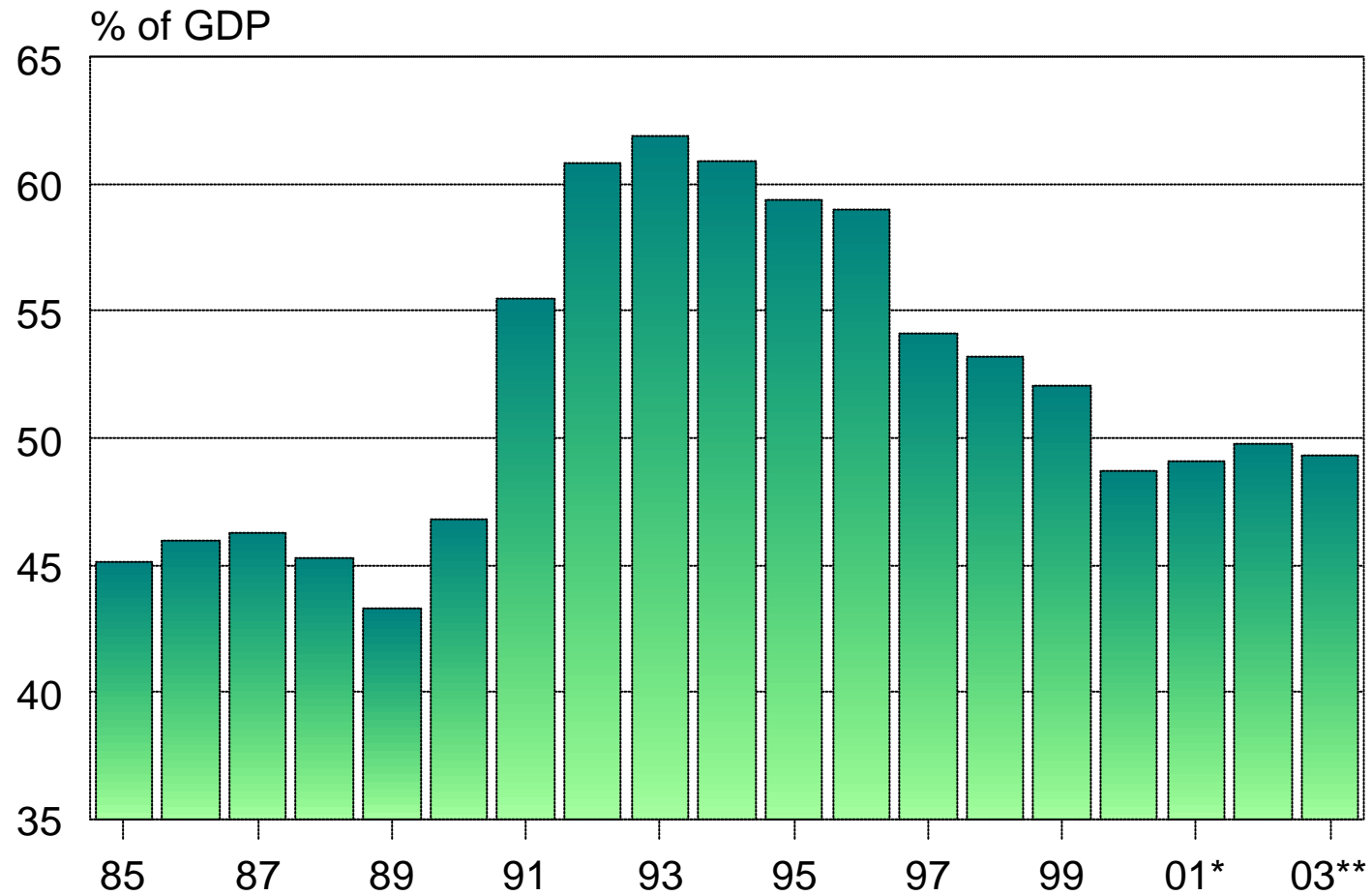
CENTRAL GOVERNMENT NET LENDING 1980 - 2003



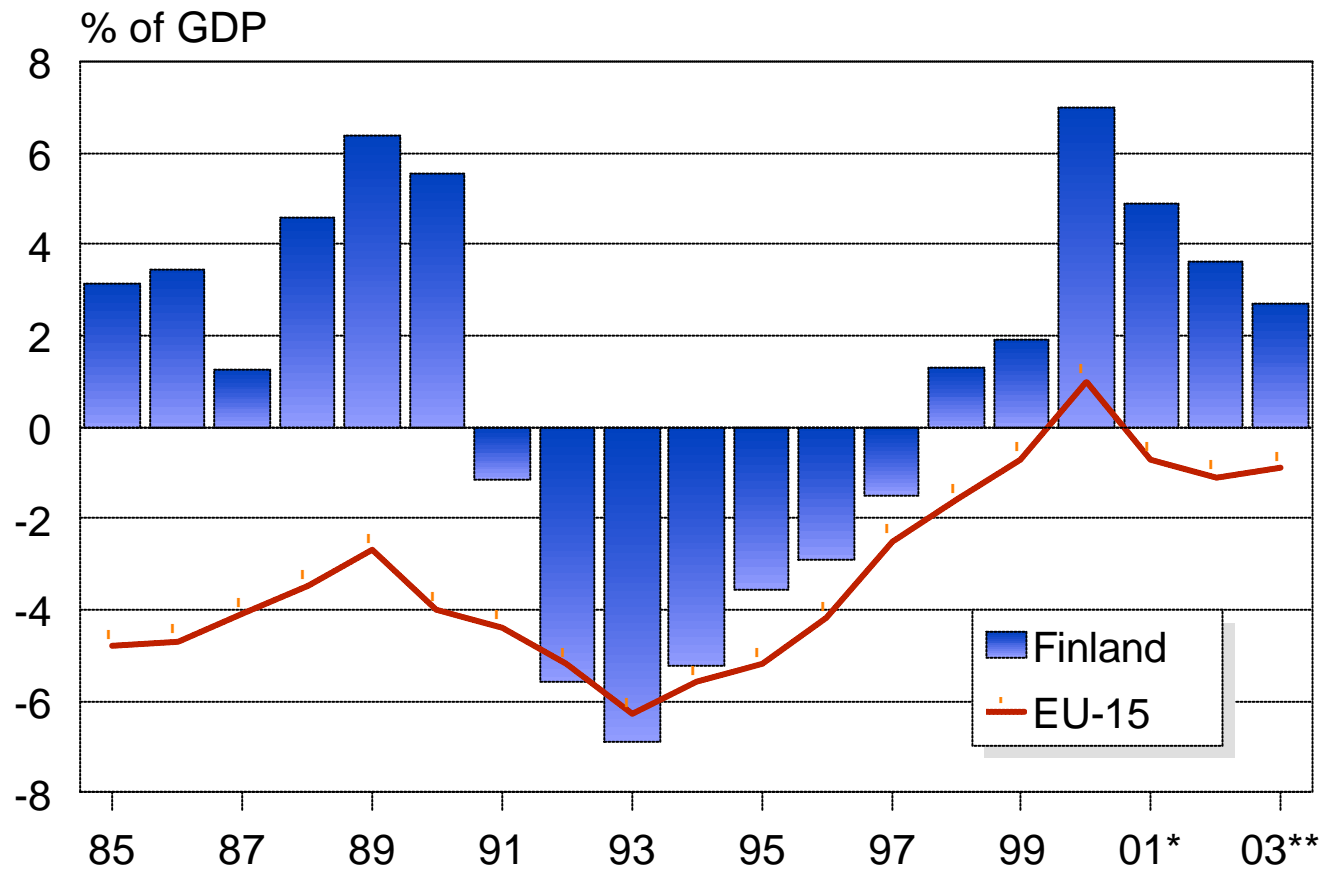
CENTRAL GOVERNMENT DEBT 1980 - 2003



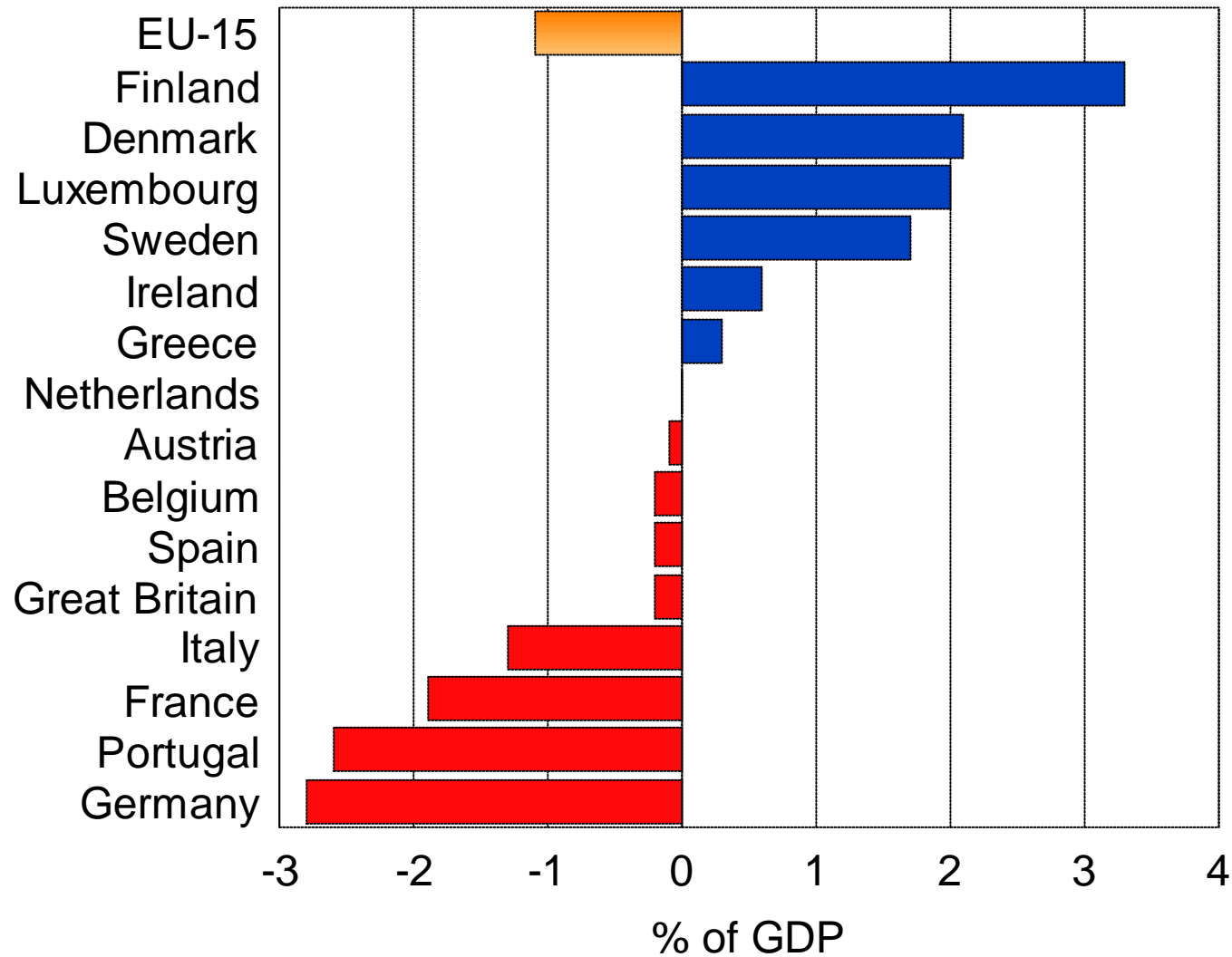
GENERAL GOVERNMENT EXPENDITURE 1985 - 2003



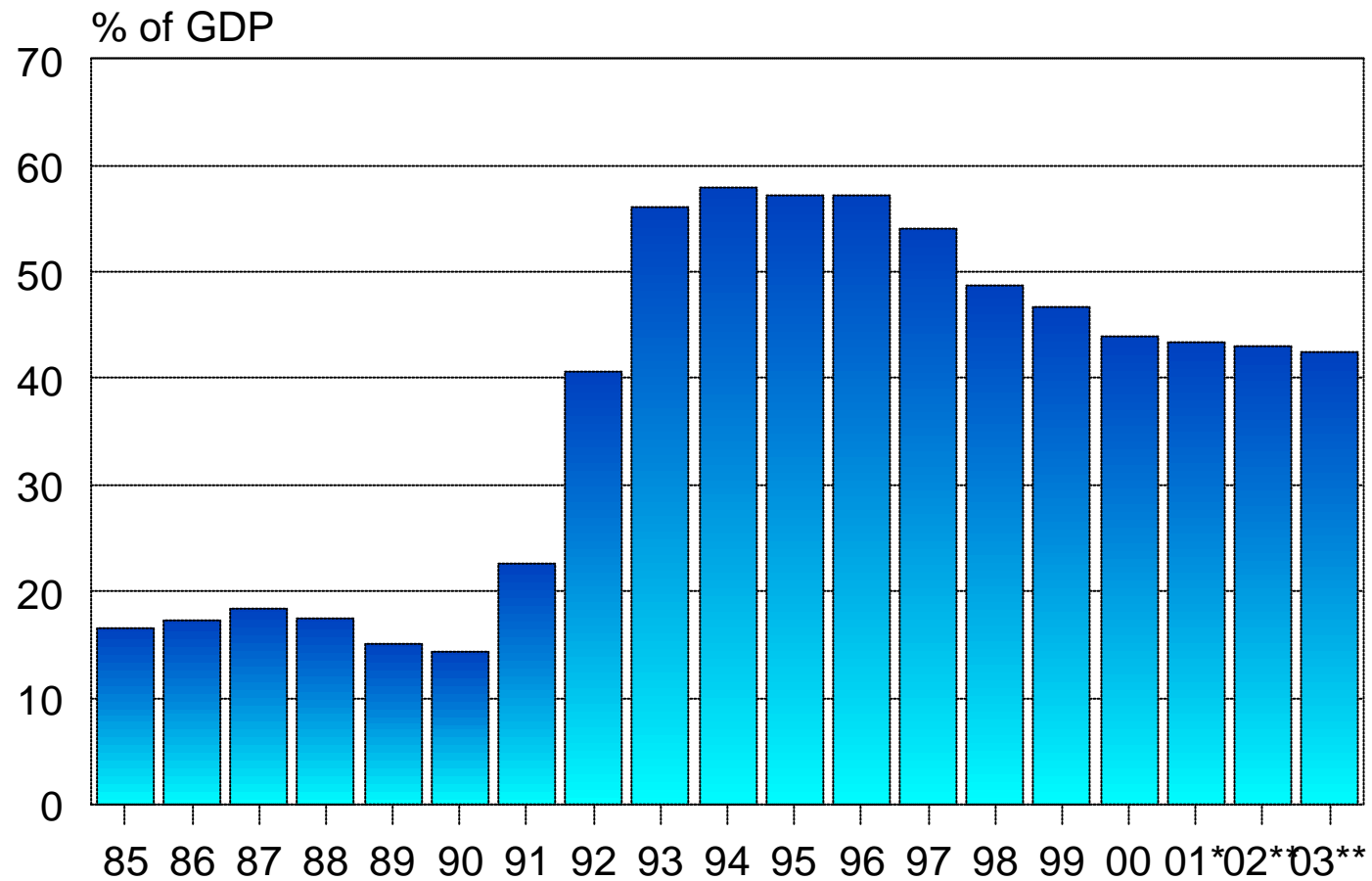
GENERAL GOVERNMENT NET LENDING (EMU) 1985 -2003



GENERAL GOVERNMENT NET LENDING (EMU) IN EU-COUNTRIES 2002



GOVERNMENT GROSS DEBT (EMU) 1985 - 2003



GOVERNMENT GROSS DEPT (EMU) IN EU-COUNTRIES 2002

